



GARFIELD ELEMENTARY SCHOOL **PARENT ORIENTATION** **2023-2024**

GARFIELD ADMINISTRATION TEAM

Carlos U. Ramirez, Principal
Dolimer Gonzalez, Assistant Principal
Sandra Venegas, Counselor
Luann Viesca, Librarian
Marisela Magadan, Bilingual Specialist



EXCELLENCE
IS THE EXPECTATION

SCHOOL HOURS

- School Opens: 7:15am
- Breakfast Starts: 7:15am
- Breakfast Ends: 7:50am
- School Starts: 7:50am
- Late Arrival: 8:00am
- Late Arrivals after 8:15am must be walked into the office by parent.
- School Ends: 3:05pm



*Being on time is important.
Every minute of your child's education is valuable.*

REQUIRED FORMS



- All required forms for the school year are located in the Parent Portal at www.sfdr-cisd.org.
- These forms help the district to have all the information for your child/children and for the campus to get all the benefits from the state as a resource for students.
- If you need assistance accessing the parent portal, call our front office at 830.778.4700 and set up a time to come to our computer lab for help.

SCHOOL SUPPLIES

- **School Supply List posted on Facebook Page:**
SFDRCID and Garfield Elementary Official
- **Regular backpacks** are allowed K-5 elementary.
- **Water bottles encouraged.**
 - **Fountains** have been installed with water bottle fillers





WE ARE A CLASS DOJO SCHOOL!

- If you have any questions, always feel free to contact your child's teacher first. They are the best source of information.
- We are a Class Dojo School!
 - All teachers will use Class Dojo which allows you to receive messages from the teacher as a group or individually. This is great if you have a quick question and don't have time for a phone call. Your child's teacher will help you with how this works if needed. This can be used on a computer, laptop, tablet or phone.
- The principal can also communicate school wide with information for all parents that are connected.

WE ARE A CLASS DOJO SCHOOL!



Garfield Elementary School



Follow our Facebook Group!

“Garfield Elementary Official”

Garfield Elementary School

ATTENDANCE

- Attendance is monitored daily for each child.
 - **Daily attendance is very important.**
- If a student is absent, the school will contact parents via phone after 8:15 AM daily.
 - If contact cannot be made, a home visit will be made by our parent liaison.
- Chronic Absenteeism will result in parent/admin conferences, possible retention, Principal's Plan of Action, etc.



PERFECT ATTENDANCE

- **District Policy:** Criterion for awarding perfect attendance is as follows:
 - A perfect attendance award will be given to any student who has attended school each day during the six-week period and has not been absent for any part of the day or course period during the six-week period.
 - Non-attendance due to school-related events such as field trips, athletic events, UIL events, etc. are not considered absences.
 - Non-attendance due to any other reasons will be considered ineligible for a perfect attendance award.
- Students meeting perfect attendance requirements will be incentivised through bike raffles, perfect attendance celebrations, etc.

SAFETY & SECURITY

- We welcome visitors on our campus
 - Visitors must report to the front office
- **U.S. Driver's License is required to come on campus**
- **ALL Visitors must go through the Raptor System**
 - Passport, Military ID, or any other form of ID is **not** accepted for entrance onto the campus and cannot be used in the Raptor System

NOTICE

**ALL VISITORS
MUST REGISTER
AT OFFICE**



AVISO

**TODOS LOS
VISITANTES DEBERÁN
REGISTRARSE EN
LA OFICINA**

SAFETY & SECURITY

- **Monthly Drills (Hold, Secure, Lockdown, Evacuate, Shelter)**
 - We will notify all parents a few minutes before conducting a drill.
We will send courtesy message through School Dojo/School Messenger.
 - *“Garfield Elementary will conduct an evacuation drill within the next 10 mins to familiarize students & staff with the appropriate safety protocols”*
 - If visiting campus during a drill, we kindly ask that you wait in your vehicle until our drill is over.
- All exterior doors and classrooms doors will remain locked.
- Safety signs will be posted on doors and inside classrooms.



HOLD



SECURE



LOCKDOWN



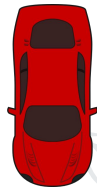
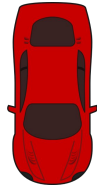
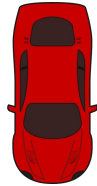
EVACUATE



SHELTER

MAP OF DROP-OFF & PICK-UP AREA

- **Drop-Off:** Gates open at 7:15 AM, students report to the Cafeteria.
- **Pick-Up:** Students will be called out of their classroom when parent/guardian arrives.
- **West & East Walkers:** West Martin Street



Bus/Daycare Lane Only



KINDER DROP OFF - 1ST DAY OF SCHOOL

- Parents may drop off their Kinder child in front of the school and one of our friendly staff members will escort your child inside the building.
- For parents wishing to get off their vehicle and walk their child, our Kinder teachers will be receiving all Kinder students in the cafeteria. Use the playground/cafeeteria entrance to walk your child. See map to the right →



Morning Drop Off

- After students are dropped off in the morning (front of school), students will walk into the cafeteria to have breakfast and/or report straight to class.
- Staff members will be available to guide students to their classrooms.
- See map to the right →



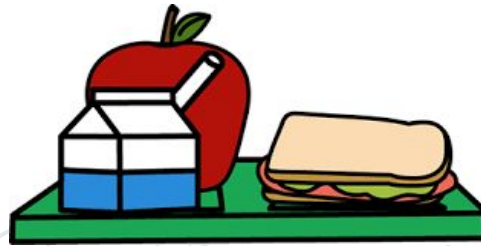
Afternoon Car PICK-UP

- Pick up in the front of the school.
- **Pick-Up at 3:05pm:** Students will be called out of their classroom when parent/guardian arrives.
- Please use our Garfield Pick Up Template to place in your car's windshield. Will be provided the first day of school.
- **West & East Walkers:** West Martin Street



LUNCH

- Parents are allowed to eat with students for lunch.
 - They will follow the check-in policy in the front office prior to being allowed in the school cafeteria.
- Parents are allowed to **bring lunch for their children only**.
 - Lunch may not be brought for other students or relatives on campus (this is due to federal guidelines).
- Parents cannot eat off of student trays, but may purchase one of their own.



CELEBRATIONS

- Birthdays are celebrated the last Friday of each month only.
- Prepackaged, store-bought treats may be brought in for the class on the last Friday of each month.
- Communicate with the classroom teacher, if you would like to bring items for a celebration.



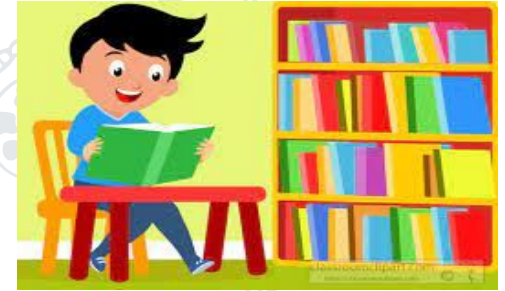
ASSESSMENTS

- Quizzes/Formatives (Weekly)
- Progress Monitoring (Math is weekly and ELA is every other week)
- Summatives (Six-Weeks)
- AR (as needed and/or required by teacher)
- Star Renaissance (Six-Weeks)
- TPRI (3 x's per year for K-2 only)
- STAAR (3rd-5th): Reading, Math, and Science (5th)

***Kinder will include a report card that is based on developmental skills needed to be successful.**



LIBRARY



- **Reading Challenge:** Minimum of 30 Minutes a Day
 - Kindergarten - Picture
 - 1st Grade - Picture & Sentence
 - 2nd-5th Grade - Mini Report
- **Check-Out Books**
 - During instructional time with teacher permission
 - Required - Library Pass
 - Afterschool 3:00-3:30pm

HOW CAN YOU HELP YOUR CHILD?

- Read with your child.
- Not sure what to read? Ask your child's teacher.
 - Ask your child's teacher what specific concepts that you can work with your child on.
- Does your child need to talk to someone? Child can make contact with Mrs. Venegas, our school counselor.





SPIRIT SHOP



PERSONALIZED CUPS - SHIRTS & HOODIES

POWDER COATED - DOUBLE WALL - STAINLESS STEEL





SPIRIT SHOP

PERSONALIZED CUPS - SHIRTS & HOODIES
POWDER COATED - DOUBLE WALL - STAINLESS STEEL



30oz. Tumbler Available Colors: BLACK, BLUE, RED, CORAL, GREEN, NAVY, HOT PINK, TEAL

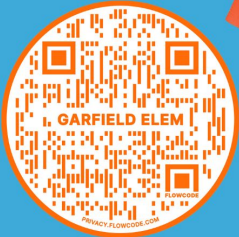
40oz. Tumbler w/Handle Available Colors: BLACK, WHITE, GREEN, PINK, LIGHT BLUE, HOT PINK, GRAY

20oz. & 40oz. Water Bottles Available Colors: BLACK, BLUE, NAVY, LEMON, GREEN, MAROON, NAVY, ORANGE, RED, ROSE GOLD, WHITE, TEAL, YELLOW, PURPLE

TUMBLERS
30 oz - \$30
40 oz - \$35

BOTTLES
20 oz - \$27
40 oz - \$32

SCAN TO PURCHASE



PLACE ALL ORDERS ONLINE.
www.supportandgive.com/purchase
PARTICIPANT ID: 79288307



SHIRTS
YS - AXL - \$15
HOODIES
YS - AXL - \$30
XXL & XXXL +\$4



SPIRIT SHOP

VASOS PERSONALIZADOS - CAMISAS Y SUDADERAS
VASOS: DOBLE PARED - SELLADO AL VACIO -
RECUBIERTO EN POLVO DE COLOR - IMPRESO CON LASER



30oz. Tumbler Available Colors: BLACK, BLUE, RED, CORAL, GREEN, NAVY, HOT PINK, TEAL

40oz. Tumbler w/Handle Available Colors: BLACK, WHITE, GREEN, PINK, LIGHT BLUE, HOT PINK, GRAY

20oz. & 40oz. Water Bottles Available Colors: BLACK, BLUE, NAVY, LEMON, GREEN, MAROON, NAVY, ORANGE, RED, ROSE GOLD, WHITE, TEAL, YELLOW, PURPLE

VASOS
30 oz - \$30
40 oz - \$35

BOTELLAS
20 oz - \$27
40 oz - \$32

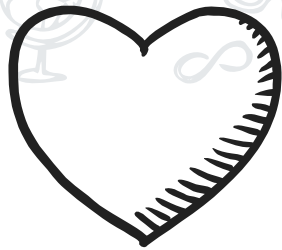
SCANEAR PARA REALIZAR COMPRAS.



VISITE NUESTRA TIENDA VIRTUAL
www.supportandgive.com/purchase
PARTICIPANT ID: 79288307



SHIRTS
YS - AXL - \$15
HOODIES
YS - AXL - \$30
XXL & XXXL + \$4



THANKS!

Thank you for taking the time to attend your child's orientation.
At this time you may briefly visit your child's teacher.

1 If you have further questions, please feel free to stop by the cafeteria and chat with
Mr. Carlos Ramirez, Principal and Miss Dolimer Gonzalez, Assistant Principal.

