

# DEL RIO MIDDLE SCHOOL

## Campus Improvement Plan

### 2020/2021

*Este plan de mejoramiento del campus está disponible en español a pedido.  
Por favor, póngase en contacto con la oficina de la escuela.*

*8th Grade*

Cynthia Salas  
720 E. De La Rosa  
830-778-4500  
[cynthia.salas@sfd-r-cisd.org](mailto:cynthia.salas@sfd-r-cisd.org)

Date Reviewed:

DMAC Solutions ®

Page 1 of 82

Date Approved:

7/29/2021

# DEL RIO MIDDLE SCHOOL

## **Mission**

*The mission of Del Rio Middle School is for all staff and students to:*

*Develop a foundation for future goals  
Remain true to yourself, your beliefs, and your dreams  
Maintain a positive attitude and mind  
Strive for success*

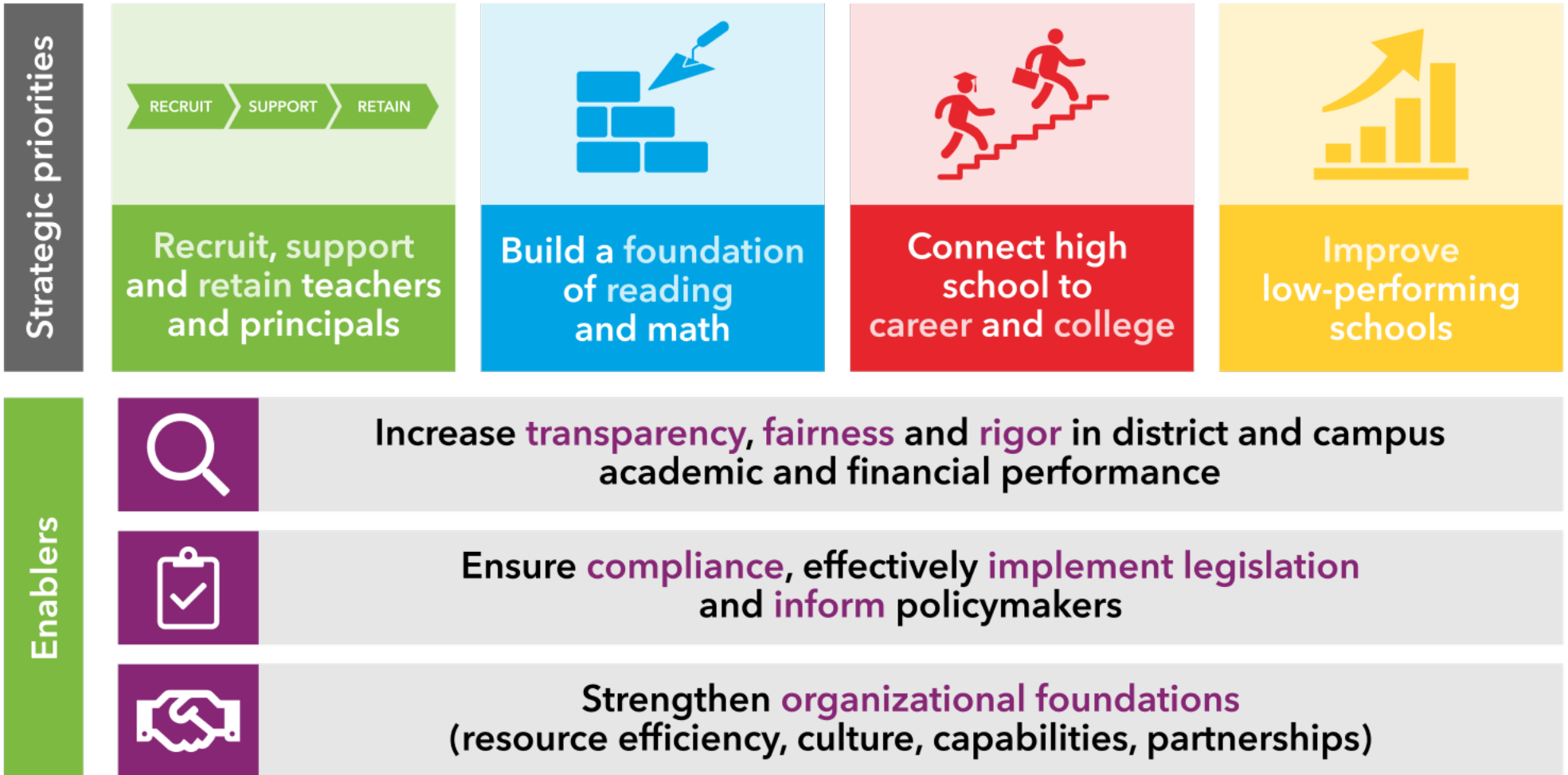
## **Vision**

*Our vision is to provide the best educational setting for all students and staff. We will promote respect and responsibility while providing a safe school environment - one that ensures academic, emotional and social success for all.*

### Nondiscrimination Notice

DEL RIO MIDDLE SCHOOL does not discriminate on the basis of race, color, national origin, sex, or disability in providing education services, activities, and programs, including vocational programs, in accordance with Title VI of the Civil Rights Act of 1964, as amended; Title IX of the Educational Amendments of 1972; and section 504 of the rehabilitation Act of 1973; as amended.

# Every child, prepared for success in college, a career or the military.



*\*adapted from TEA Strategic Plan - <https://tea.texas.gov>*

# DISTRICT GOALS

1. The District shall maintain a safe environment, utilize quality curriculum and diverse instructional opportunities to ensure student achievement at the highest standards of excellence.
2. The District shall be a good steward of the community's resources - financial, human, facilities - and explore new opportunities for organizational efficiency and effectiveness.
3. The District shall provide meaningful and effective communication in a timely manner to all parents, students, staff and District Partners.
4. The District shall study the current level of satisfaction which will lead to a plan for improvement at Del Rio Middle School.
5. The District shall prioritize reading as a skill for lifelong learning.

# DEL RIO MIDDLE SCHOOL Site Base

Name	Position
Soto, Roger	Assistant Principal
Gomez, Michelle	Teacher
Salas, Cindy	8th Grade Principal
Gee, Melanie	PE Department Head
Claudia, Faz	Social Studies Department Head
Girdy, Annette	8th Grade Counselor
Ramon, Rosella	Librarian
Lopez, Claudia	Community Representative
Garcia, Teresa	Teacher
Sigley, Maria	Teacher
Flores-Baker, Margo	Teacher
Wille, Silvia	8th Grade Counselor
Garza, Erika	Special Ed. Department Leader
Diaz, Sergio	Community Member
Richardson, Wayne	Community Member
Campuzano-Gonzalez, Stephanie	Business Representative
De Leon, George	Business Representative
Spiers, Michelle	Parent
Jimenez, Amor	Parent

# DEL RIO MIDDLE SCHOOL

**Goal 1.** The District shall maintain a safe environment, utilize quality curriculum and diverse instructional opportunities to ensure student achievement at the highest standards of excellence.

**Objective 1.** By June 2021, we will increase Student Achievement in all core areas (ELA, Math, Science, and Social Studies) by 5% and strengthen educational program opportunities.

Activity/Strategy	Person(s) Responsible	Timeline	Resources	Evaluation
<p>1. After data analysis of the 2019 STAAR results in all tested areas, data will be used to plan lessons during Planning Protocol that will target the specificity of all TEKS to meet the needs of all students. This will assist in increasing the rigor of classroom instruction and differentiating teaching practices. (Title I SW: 1,2) (Title I SW Elements: 1.1,2.1,2.2,2.5,2.6,3.1) (Title I TA: 1,2,3) (Target Group: All,7th ,8th) (Strategic Priorities: 2,4) (CSFs: 1,2,3,4,7)</p>	<p>Campus Administrators, Cluster/Department Leaders, Dean of Instruction, Special Ed Teacher, Teachers</p>	<p>August 2020 - June 2021</p>	<p>(S)Local Funds - \$0</p>	<p>Criteria: Walk-throughs will confirm that instructional rigor and specificity is implemented on a daily basis. Continue to monitor planning protocol sessions for fidelity.</p> <p>06/18/21 - Completed (S) 10/09/20 - Pending 01/08/20 - Some Progress</p>
<p>2. Provide professional development to include but not be limited to campus needs to include content specific trainings, differentiated instruction, QTEL strategies, understanding the TEKS, data analysis and how to utilize it, STAAR review, implementation of CHAMPS, curriculum writing throughout the year for all staff to adjust curriculum as needed. Some possible sources can include: Region XV, Lead4Ward, and other outside consultants. The professional development will focus on the needs addressed in the Campus Needs Assessment. (Targeted Improvement: English Learners) (Title I SW: 1,2,4,5,8) (Title I SW Elements: 1.1,2.2,2.4,2.5,2.6) (Title I TA: 3,5,6,8) (Target Group: All,7th ,8th) (Strategic Priorities: 2,3,4) (CSFs: 1,2,3,4,7)</p>	<p>Campus Administrators, Cluster/Department Leaders, Counselors, Curriculum Coordinators, Teachers</p>	<p>August 2020 - July 2021</p>	<p>(F)Title I - \$19,200, (F)Title IIA Principal and Teacher Improvement</p>	<p>06/18/21 - Completed (S) 09/25/20 - On Track</p>
<p>3. RTI Days will be utilized to plan for interventions and monitor student performance in planning for the six weeks. Tested area teachers will have a planning period each day, in addition to their conference period to plan together along with a department head and assigned administrator. Resource Fridays will be converted to PD Fridays were teams will empower each other in the process of high-</p>	<p>Campus Administrators, Cluster/Department Leaders, Counselors, Curriculum Coordinators, Dean of Instruction, Librarian, Teachers</p>	<p>August 2020- May 2021</p>	<p>(F)Title I</p>	<p>06/18/21 - Completed (S) 09/25/20 - On Track</p>

# DEL RIO MIDDLE SCHOOL

**Goal 1.** The District shall maintain a safe environment, utilize quality curriculum and diverse instructional opportunities to ensure student achievement at the highest standards of excellence.

**Objective 1.** By June 2021, we will increase Student Achievement in all core areas (ELA, Math, Science, and Social Studies) by 5% and strengthen educational program opportunities.

Activity/Strategy	Person(s) Responsible	Timeline	Resources	Evaluation
yield strategies. Action Plan will be developed specifically for M1s, M2s, M3s, and M4s to move them from Approaches to Meets/Masters. (Targeted Improvement: English Learners) (Title I SW: 1,2,3,8,9,10) (Title I SW Elements: 1.1,2.2,2.5,2.6) (Title I TA: 1,2,3,4,5,8) (Target Group: All,7th ,8th) (Strategic Priorities: 2,4) (CSFs: 1,2,3,4,7)				
4. DRMS staff will have opportunities to virtually attend district professional development sessions through out the school year targeting district initiatives (Canvas Platform). (Title I SW: 1,2,4) (Title I SW Elements: 1.1,2.1,2.2,2.3,2.6,3.1) (Title I TA: 5,6,8) (Target Group: All,7th ,8th) (Strategic Priorities: 1,2,3,4) (CSFs: 1,3,4,6,7)	Campus Administrators, Counselors, Librarian, Teachers	August 2020 - June 2021	(F)Title I - \$6,525, (F)Title IIA Principal and Teacher Improvement	06/18/21 - Completed (S) 09/25/20 - On Track
5. The administrative team will monitor the instruction in the classroom with a minimum of 3-5 thirty minute walk-throughs per week while providing timely feedback to foster critical conversations that will include reflective questions to improve instruction. (Title I SW: 1,2,8) (Title I SW Elements: 1.1,2.2,2.5,2.6) (Title I TA: 1) (Target Group: All,7th ,8th) (Strategic Priorities: 1,2,4) (CSFs: 1,2,3,4,6,7)	Campus Administrators, Teachers	August 2020- June 2021	(S)Local Funds - \$0	06/18/21 - On Track (S) 09/25/20 - Some Progress
6. All students will be provided opportunities to attend before or after school guided instruction sessions that target low performing TEKS based on DMAC reports. Action plans for online students are implemented for core subjects. (Title I SW: 1,3) (Title I SW Elements: 2.2,2.5,2.6) (Target Group: AtRisk,504) (Strategic Priorities: 2,4) (CSFs: 1,2,4)	Campus Administrators, Cluster/Department Leaders, Counselors, Curriculum Coordinators, Teachers	October 2020 - June 2021	(F)Federal Grant - \$76,000, (F)Title I - \$4,000, (S)State Compensatory	06/18/21 - Completed (S) 09/25/20 - Some Progress
7. The administrative staff and campus leaders will plan and strategize instruction	Campus Administrators, Cluster/Department Leaders,	August 2020 - June 2021	(F)Title I, (S)State Compensatory	06/18/21 - Completed (S) 09/25/20 - Some Progress

# DEL RIO MIDDLE SCHOOL

**Goal 1.** The District shall maintain a safe environment, utilize quality curriculum and diverse instructional opportunities to ensure student achievement at the highest standards of excellence.

**Objective 1.** By June 2021, we will increase Student Achievement in all core areas (ELA, Math, Science, and Social Studies) by 5% and strengthen educational program opportunities.

Activity/Strategy	Person(s) Responsible	Timeline	Resources	Evaluation
throughout the year. Reform strategies and activities will focus on improving ELL and Special Education scores in all tested areas. Campus was identified for Support and Improvement for specific groups due to not meeting the target for three consecutive years. (Targeted Improvement: Special Ed. and English Learners) (Title I SW: 1,2,8,10) (Title I SW Elements: 2.2,2.5,2.6) (Target Group: LEP,SPED,8th) (Strategic Priorities: 2,4) (CSFs: 1,2,3,4,6,7)	Curriculum Coordinators, Dean of Instruction, Librarian, Mental Health & Disabilities, Teachers			
8. Campus administration will lead staff during RTI Days in identifying areas of strength and weakness to drive effective classroom practices and high-yield strategies. (Title I SW: 1,2) (Title I SW Elements: 2.2,2.4,2.5,2.6) (Target Group: All) (Strategic Priorities: 2,4) (CSFs: 1,2,3,4)	Campus Administrators, Curriculum Coordinators, Dean of Instruction, Teachers	Beginning of school year	(O)Local Districts - \$2,000	06/18/21 - Completed (S) 09/25/20 - On Track



# DEL RIO MIDDLE SCHOOL

- Goal 1.** The District shall maintain a safe environment, utilize quality curriculum and diverse instructional opportunities to ensure student achievement at the highest standards of excellence.
- Objective 2.** By June 2021, the percentage of all students meeting standard on the ELA 8th Grade state assessments will increase from 68% to 73% by second administration for Tier II and III students.

Activity/Strategy	Person(s) Responsible	Timeline	Resources	Evaluation
<p>1. ELA teachers will provide students with before and after school support throughout the week for all learning model (Attending/Online). Target groups will consist of English Learners that received approaches on their 7th Grade Benchmark and develop plan for them to progress to Meets in 8th Grade. (Title I SW: 1,2,10) (Title I SW Elements: 1.1,2.2,2.6) (Title I TA: 1,4,6,8) (Target Group: AtRisk) (Strategic Priorities: 2,4) (CSFs: 1,4,7)</p>	<p>Campus Administrators, Chief Instructional Officers, Dean of Instruction, Teachers</p>	<p>August 2020 - July 2021</p>	<p>(F)Title I - \$5,000</p>	<p>06/18/21 - Completed (S) 09/25/20 - Some Progress</p>
<p>2. 8th Grade ELA teachers will incorporate small group interventions during ELA class. Through Power Block, teachers will reinforce reading skills including: reading fluency and comprehension. (Targeted Improvement) (Title I SW: 1,2) (Title I SW Elements: 1.1,2.2,2.5,2.6) (Title I TA: 1,2,8) (Target Group: All,8th) (Strategic Priorities: 2,4) (CSFs: 1,4)</p>	<p>Bilingual Department, Campus Administrators, Chief Instructional Officers, Dean of Instruction, Librarian, Teachers</p>	<p>August 2020 - May 2021</p>	<p>(O)Local Districts - \$3,000</p>	<p>06/18/21 - Completed (S) 09/25/20 - Some Progress</p>
<p>3. Support will be provided to all ELL students identified as 'Beginner' or 'Intermediate' by placing them in sheltered teams. Targeted instruction will be provided by ESL teacher. Programs such as QTEL and other reading interventions will be implemented to enhance language development. (Targeted Improvement) (Title I SW: 1,2,4,9,10) (Title I SW Elements: 2.2,2.6,3.1,3.2) (Target Group: ESL) (Strategic Priorities: 2,3,4) (CSFs: 1,2)</p>	<p>Bilingual Department, Campus Administrators, Cluster/Department Leaders, Computer Aides, Counselors, Curriculum Coordinators</p>	<p>August 2020 - June 2021</p>	<p>(F)Title I - \$13,000, (F)Title III Bilingual / ESL</p>	<p>06/18/21 - Completed (S) 09/25/20 - On Track</p>
<p>4. Develop and implement data folders for individual students. Folders will help students identify their own strengths and weaknesses. Students will be able to reflect on their performance while monitoring their new goals per six weeks. (Title I SW Elements: 2.2,2.6) (Target Group: All) (Strategic Priorities: 2,3,4) (CSFs: 1,2)</p>	<p>Campus Administrators, Counselors, Parents, Teachers</p>	<p>October 2020 - June 2021</p>	<p>(S)Local Funds - \$4,000</p>	<p>06/18/21 - Completed (S) 09/25/20 - On Track</p>

# DEL RIO MIDDLE SCHOOL

- Goal 1.** The District shall maintain a safe environment, utilize quality curriculum and diverse instructional opportunities to ensure student achievement at the highest standards of excellence.
- Objective 2.** By June 2021, the percentage of all students meeting standard on the ELA 8th Grade state assessments will increase from 68% to 73% by second administration for Tier II and III students.

Activity/Strategy	Person(s) Responsible	Timeline	Resources	Evaluation
<p>5. ELA teachers will be provided with the Sirius Educational Solutions STAAR Zingers. The zingers will help teachers identify the most missed questions on the STAAR assessment. With this information, teachers will plan for engaging lessons targeting areas of high need. (Title I SW Elements: 2.2,2.6) (Target Group: All) (Strategic Priorities: 2,4) (CSFs: 1,2)</p>	<p>Campus Administrators, Chief Instructional Officers, Curriculum Coordinators, Dean of Instruction, Directors, ISS Supervisor, Teachers</p>	<p>September 2020- June 2021</p>	<p>(F)Title I - \$6,000, (S)Local Funds - \$6,000</p>	<p>06/18/21 - Completed (S) 09/25/20 - On Track</p>
<p>6. The staff At DRMS will promote the Million Word Reading Challenge. Students are being asked to read at least one million words this school year. By doing so, students will enhance their vocabulary, reading comprehension, and other reading skills. Towards the end of the year, "Millionaires" will be rewarded with a nice meal at school as allowable according to CDC Guidelines. Library staff revised their challenge to include all three models of learning this school year. (Title I SW Elements: 2.6,3.1) (Target Group: All) (Strategic Priorities: 2,4) (CSFs: 1,4,5)</p>	<p>Campus Administrators, Dean of Instruction, Dyslexia Teacher, Librarian, Special Ed Teacher, Teachers</p>	<p>October 2020 - May 2021</p>	<p>(S)Local Funds - \$1,000</p>	<p>06/18/21 - Completed (S) 09/25/20 - On Track</p>

# DEL RIO MIDDLE SCHOOL

**Goal 1.** The District shall maintain a safe environment, utilize quality curriculum and diverse instructional opportunities to ensure student achievement at the highest standards of excellence.

**Objective 3.** By June 2021, the percentage of all students meeting standard on the Math 8th Grade state assessment will increase from 76% to 80% for Tier II and III students.

Activity/Strategy	Person(s) Responsible	Timeline	Resources	Evaluation
1. All Math teachers will incorporate manipulatives and games in their lesson plans and intervention routines, to increase engagement of students and the understanding of complex problems. Specific apps will be available for online students. (Title I SW: 1,2) (Title I SW Elements: 2.2,2.5) (Title I TA: 1) (Target Group: All,8th) (Strategic Priorities: 2,4) (CSFs: 1)	Cluster/Department Leaders, Teachers	August 2020 - June 2021	(F)Title I - \$4,000	06/18/21 - Completed (S) 09/25/20 - On Track
2. Support will be provided to all Math students by providing them with STAAR supplemental materials such as Mentoring Minds. (Title I SW: 1,2) (Title I SW Elements: 2.4,2.5,2.6) (Target Group: All) (Strategic Priorities: 2,4) (CSFs: 1,7)	Campus Administrators, Chief Instructional Officers, Curriculum Coordinators, Teachers	September 2020- June 2021	(F)Title I - \$10,000, (S)Local Funds - \$10,000	06/18/21 - Completed (S) 09/25/20 - On Track 09/25/20 - Some Progress
3. Students will keep up with data folders. They will record assessment scores and identify areas of strengths and weaknesses. They will reflect on results and identify adjustments that need to be made to ensure attainment of math concepts. Data from BOY will be utilized. (Targeted Improvement) (Title I SW Elements: 2.5,2.6) (Target Group: All) (Strategic Priorities: 2,3,4) (CSFs: 2)	Campus Administrators, Dean of Instruction, Teachers	August 2020 - June 2021	(S)Local Funds - \$4,000	06/18/21 - On Track (S) 09/25/20 - Some Progress
4. Math teachers will be provided with the Sirius Educational Solutions STAAR Zingers. The zingers will help teachers identify the most missed questions on the STAAR assessment. With this information, teachers will plan for engaging lessons targeting areas of high need. (Title I SW: 1,2,3,4) (Target Group: All) (Strategic Priorities: 2,3,4) (CSFs: 1,2)	Campus Administrators, Chief Instructional Officers, Teachers	August 2020 - June 2021	(F)Title I - \$1,000, (S)Local Funds - \$1,000	06/18/21 - Completed (S) 09/25/20 - On Track
5. Math teachers will provide students with before and after school support throughout the week for students attending and online. (Title I SW Elements: 2.6) (Target Group: AtRisk)	Campus Administrators, Counselors, Dean of Instruction, Parents, Teachers	October 2020 - May 2021	(F)Title I, (S)Local Funds - \$3,000	06/18/21 - Significant Progress (S) 09/25/20 - Some Progress

# DEL RIO MIDDLE SCHOOL

**Goal 1.** The District shall maintain a safe environment, utilize quality curriculum and diverse instructional opportunities to ensure student achievement at the highest standards of excellence.

**Objective 3.** By June 2021, the percentage of all students meeting standard on the Math 8th Grade state assessment will increase from 76% to 80% for Tier II and III students.

Activity/Strategy	Person(s) Responsible	Timeline	Resources	Evaluation
(Strategic Priorities: 2) (CSFs: 1,2,4)				
6. Sheltered Instruction classes will be formed to provide support for beginner and intermediate ESL students in Math while closing monitoring advance and advance high students in regular classes. (Targeted Improvement) (Title I SW: 1,2,3,6) (Title I SW Elements: 2.2,2.5) (Target Group: ESL) (Strategic Priorities: 2) (CSFs: 1,4)	Bilingual Department, Chief Instructional Officers, Dean of Instruction, Teachers	August 2020 - June 2021	(F)Title III Bilingual / ESL, (O)Local Districts - \$4,000	06/18/21 - On Track (S) 09/25/20 - On Track

# DEL RIO MIDDLE SCHOOL

**Goal 1.** The District shall maintain a safe environment, utilize quality curriculum and diverse instructional opportunities to ensure student achievement at the highest standards of excellence.

**Objective 4.** By June 2021, the percentage of all students meeting standard on the Science state assessment will increase from 67% to 72% for all students.

Activity/Strategy	Person(s) Responsible	Timeline	Resources	Evaluation
<p>1. Science classes will conduct one lab per week to engage 100% of students in the learning process. Materials and supplies will support the instructional process. Labs to be included are: Frog Dissection, Plant and Animal Cells and Owl Pellets. Labs will need to be modified for online students. (Title I SW: 1,2) (Title I SW Elements: 1.1,2.5) (Title I TA: 1,2,4) (Target Group: All,7th ,8th) (Strategic Priorities: 4) (CSFs: 1,4)</p>	<p>Campus Administrators, Curriculum Coordinators, Dean of Instruction, Teachers</p>	<p>August 2020 - June 2021</p>	<p>(F)Title I - \$5,000</p>	<p>06/25/21 - Completed (S) 09/25/20 - Some Progress</p>
<p>2. 7th Grade Science will administer an end of the year assessment consisting of all the 6th and 7th grade TEKS that are tested at 8th grade. The assessment results will be uploaded into DMAC so that 8th grade teachers can begin immediate interventions during 2020-2021 school year. (Title I SW: 1,2,9) (Title I SW Elements: 2.2,2.5) (Title I TA: 1,2) (Target Group: All,7th ) (Strategic Priorities: 4) (CSFs: 1)</p>	<p>Campus Administrators, Cluster/Department Leaders, Teachers</p>	<p>August 2020- May 2021</p>	<p>(S)Local Funds - \$0</p>	<p>06/25/21 - Completed (S) 09/25/20 - Pending</p>
<p>3. Support will be provided for all Science students in the form of supplemental STAAR material such as Mentoring Minds and Stem Scopes. (Title I SW: 1) (Title I SW Elements: 2.5,2.6) (Target Group: All,8th) (Strategic Priorities: 4) (CSFs: 1,7)</p>	<p>Campus Administrators, Chief Instructional Officers, Curriculum Coordinators, Dean of Instruction, Teachers</p>	<p>September 2020 - May 2021</p>	<p>(F)Title I - \$10,000</p>	<p>06/25/21 - Completed (S) 09/25/20 - On Track</p>
<p>4. Sheltered Instruction classes will be formed to provide support for beginner and intermediate ESL students in Science. University Team (Aggies) servicing specific students will collaborate in effective teaching practices in moving English Learners forward as compared to their peers. (Title I SW Elements: 1.1,2.5,2.6) (Target Group: ESL) (Strategic Priorities: 3,4) (CSFs: 1)</p>	<p>Bilingual Department, Campus Administrators, Chief Instructional Officers, Teachers</p>	<p>August 2020 - May 2021</p>	<p>(F)Title III Bilingual / ESL, (O)Local Districts - \$7,000</p>	<p>06/25/21 - Completed (S) 09/25/20 - On Track</p>
<p>5. Science teachers will provide students with</p>	<p>Campus Administrators,</p>	<p>October 2020 -</p>	<p>(F)Title I - \$12,000</p>	<p>06/25/21 - Completed (S)</p>

# DEL RIO MIDDLE SCHOOL

**Goal 1.** The District shall maintain a safe environment, utilize quality curriculum and diverse instructional opportunities to ensure student achievement at the highest standards of excellence.

**Objective 4.** By June 2021, the percentage of all students meeting standard on the Science state assessment will increase from 67% to 72% for all students.

Activity/Strategy	Person(s) Responsible	Timeline	Resources	Evaluation
before and after school support throughout the week. (Title I SW Elements: 2.2,2.5,2.6) (Target Group: All,8th) (Strategic Priorities: 3,4) (CSFs: 1,4)	Parents, Strategists, Teachers	May 2021		09/25/20 - Pending
6. Science teachers will be provided with the Sirius Educational Solutions STAAR Zingers. The zingers will help teachers identify the most missed questions on the STAAR assessment. With this information, teachers will plan for engaging lessons targeting areas of high need. (Title I SW: 1,2,9) (Title I SW Elements: 1.1,2.2,2.6) (Target Group: All,8th) (Strategic Priorities: 4) (CSFs: 1,2,4)	Campus Administrators, Chief Instructional Officers, Teachers	August 2020 - May 2021	(F)Title I - \$8,000, (S)Local Funds - \$1,000	06/25/21 - Completed (S) 09/25/20 - On Track
7. Science teachers will promote student participation in Campus/District Science Fair as allowable by CDC Guidelines. Plan will be developed to meet guidelines and safety protocol for this school year. (Title I SW: 1,2,6) (Title I SW Elements: 2.3,3.1) (Target Group: All,7th ,8th) (Strategic Priorities: 3,4) (CSFs: 1,4)	Campus Administrators, Chief Instructional Officers, Curriculum Coordinators, Teachers	Nov. 20 - March 2021	(F)Title I - \$5,000, (S)Local Funds - \$2,000	06/25/21 - Completed (S) 09/25/20 - Pending

# DEL RIO MIDDLE SCHOOL

- Goal 1.** The District shall maintain a safe environment, utilize quality curriculum and diverse instructional opportunities to ensure student achievement at the highest standards of excellence.
- Objective 5.** By June 2021, the percentage of all students meeting standard on the Social Studies state assessment will increase from 54% to 65% for all students.

Activity/Strategy	Person(s) Responsible	Timeline	Resources	Evaluation
1. 7th Grade History will incorporate one Project Based activity each 6-weeks. This will align with the 6-weeks objectives: Spanish Explorers, Oil Boom in Texas, Cave Exploration, Flag Canvases and journaling state accountability. (Target Group: All) (Strategic Priorities: 4)		September 2020 - May 2021	(F)Title I	06/25/21 - Completed (S) 09/25/20 - Some Progress
1. The History department leaders will team up with ELA department leaders to support shared concepts and objectives and cross-curricular activities, including supplies and resources - though conference periods once per each 6-week period, to meet state accountability. (Title I SW: 1,2,3,10) (Target Group: 8th)	Campus Administrators, Teachers	September 2020- June 2021	(F)Title I - \$5,000	06/25/21 - Completed (S) 09/25/20 - Some Progress
2. History teachers will be provided with the Sirius Educational Solutions STAAR Zingers. The zingers will help teachers identify the most missed questions on the STAAR assessment. With this information, teachers will plan for engaging lessons targeting areas of high need. (Title I SW: 1,4) (Target Group: All) (Strategic Priorities: 4) (CSFs: 1,2,4)	Campus Administrators, Teachers	August 2020 - June 2021	(F)Title I - \$4,000, (S)Local Funds - \$1,000	06/25/21 - Completed (S) 09/25/20 - On Track
3. Sheltered Instruction classes will be formed to provide support for beginner and intermediate ESL students in 8th Grade Social Studies. (Title I SW: 1,6) (Target Group: ESL,AtRisk) (Strategic Priorities: 2,3,4) (CSFs: 1,2,7)	Bilingual Department, Campus Administrators, Parents, Teachers	August 2020 - June 2021	(F)Title I - \$3,000, (F)Title III Bilingual / ESL, (O)Local Districts - \$4,000	06/25/21 - Completed (S) 09/25/20 - On Track
4. Teachers will focus on developing and implementing 90-minute block that continuously checks for understanding utilizing Lowman Resource. (Title I SW: 1) (Target Group: All) (Strategic Priorities: 2,3,4) (CSFs: 1,4)	Campus Administrators, Chief Instructional Officers, Dean of Instruction, Teachers	August 2020 - June 2021	(O)Local Districts - \$3,400	06/25/21 - Completed (S) 09/25/20 - On Track

# DEL RIO MIDDLE SCHOOL

- Goal 1.** The District shall maintain a safe environment, utilize quality curriculum and diverse instructional opportunities to ensure student achievement at the highest standards of excellence.
- Objective 6.** By June 2021, student achievement for all ELL students and students in Special Education will increase by 5% on all state assessments (TSI).

Activity/Strategy	Person(s) Responsible	Timeline	Resources	Evaluation
<p>1. EL and Special Education students will be monitored by a highly qualified teachers to identify any areas of concern. Data will be analyzed during RTI Days and PD Fridays. Action plan will be developed to ensure student progress for EL and Special Ed. students while targeting and focusing on achieving the Meets Level on STAAR for specific students (M1s, M2s, M3s, M4s, Speech Only, AU, OHI, etc.). Strategy will address TSI. (Title I SW: 1,2) (Title I TA: 1) (Target Group: ESL,LEP,SPED) (Strategic Priorities: 3,4)</p>	<p>ARD Committee, Bilingual Department, Campus Administrators, Cluster/Department Leaders, Counselors, Parental Aides, Teachers</p>	<p>August 2020 - June 2021</p>	<p>(F)IDEA Special Education - \$4,000, (F)Title I - \$3,000, (O)Local Districts - \$3,000</p>	<p>06/25/21 - Completed (S) 09/25/20 - On Track</p>
<p>2. English Learners will be enrolled in classes based on proficiency levels. Interventions will be provided based on data to meet student progress (TSI). (Title I SW: 1,2,3,9,10) (Title I TA: 1,4,5) (Target Group: ESL,LEP) (Strategic Priorities: 2) (CSFs: 1,4)</p>	<p>Bilingual Department, Campus Administrators, Teachers</p>	<p>August 2020 - June 2021</p>	<p>(F)Title III Bilingual / ESL, (S)Local Funds - \$3,000</p>	<p>06/25/21 - Completed (S) 09/25/20 - On Track</p>
<p>3. Provide professional develop to all co-teach teams via Zoom. Ensure ample planning time is utilize to support guided instruction through out the 90-minute block while constantly tracking and monitoring students: Targeted Improvement. (Title I SW: 1) (Target Group: SPED) (Strategic Priorities: 2,3) (CSFs: 1)</p>	<p>Campus Administrators, Teachers</p>	<p>October 2020 - June 2021</p>	<p>(F)Title IIA Principal and Teacher Improvement, (O)Local Districts - \$4,000</p>	<p>06/25/21 - Completed (S) 09/25/20 - Some Progress</p>
<p>4. Sheltered Instruction classes will be formed to provide support for beginner and intermediate ESL students in core areas. (Title I SW: 1) (Target Group: ESL) (Strategic Priorities: 2) (CSFs: 1)</p>	<p>Campus Administrators, Teachers</p>	<p>August 2020 - June 2021</p>	<p>(O)Local Districts - \$5,000</p>	<p>06/25/21 - Completed (S) 09/25/20 - On Track</p>



# DEL RIO MIDDLE SCHOOL

**Goal 1.** The District shall maintain a safe environment, utilize quality curriculum and diverse instructional opportunities to ensure student achievement at the highest standards of excellence.

**Objective 7.** By May 2021, the campus will increase student attendance at or above 96%.

Activity/Strategy	Person(s) Responsible	Timeline	Resources	Evaluation
1. Communicate with families via parent meetings, parent letters, presentations, orientations, newsletters and all call system on the importance of daily attendance. Support parents with technology concerns for all learning models. Counselors available to assist students with Canvas. (Title I SW: 1,6,10) (Title I TA: 1,7,8) (Target Group: All)	Attendance Staff, Campus Administrators, Counselors, Parental Aides, Parents, Teachers	August 2020 - June 2021	(F)Title I - \$5,000	06/25/21 - Completed (S) 09/25/20 - On Track
2. The attendance procedures will be implemented daily with fidelity involving all office staff, counselors, and principal. Attendance secretary will email teachers daily that were out on the previous day to post their attendance for all classes. (Title I SW: 1,2,6,9,10) (Target Group: All) (Strategic Priorities: 3,4)	Campus Administrators, Parental Aides	August 2020 - June 2021	(S)Local Funds - \$500	06/25/21 - Completed (S) 09/25/20 - On Track
3. Students with previous attendance problems will be monitored during the school year by counselors and goals will be set for the 2020-2021 school year. (Target Group: All) (Strategic Priorities: 3,4)	Attendance Staff, Campus Administrators, Parents, Teachers	September 2020 - May 2021	(S)Local Funds - \$300	Criteria: Increase of student attendance for specific groups.  06/25/21 - Completed (S) 09/25/20 - On Track
4. Phone calls will be made daily if a student does not report to first period. Parents will be encouraged to bring student to school. If problems continues, administrators will meet with students and parents to create an attendance intervention plan. (Title I SW: 1,2,6) (Target Group: All) (Strategic Priorities: 2,4) (CSFs: 1,4,6)	Attendance Staff, Campus Administrators, Parental Aides, Parents, Teachers	August 2020 - May 2021	(F)Title I, (S)Local Funds - \$4,000	06/25/21 - Completed (S) 09/25/20 - Some Progress

# DEL RIO MIDDLE SCHOOL

**Goal 1.** The District shall maintain a safe environment, utilize quality curriculum and diverse instructional opportunities to ensure student achievement at the highest standards of excellence.

**Objective 8.** Beginning in August 2020, qualified and highly effective personnel will be recruited, developed and retained.

Activity/Strategy	Person(s) Responsible	Timeline	Resources	Evaluation
1. Faculty and staff will be mandated to attend professional development, planning sessions, and RTI Days remotely. (Title I SW: 1,3,4,5) (Target Group: All) (Strategic Priorities: 1,2,3,4)	Campus Administrators	August 2020 - June 2021	(F)Title IIA Principal and Teacher Improvement, (O)Local Districts	06/25/21 - Completed (S) 09/25/20 - On Track
2. All new teachers to Del Rio Middle School will be involved in a new teacher mentor program where they will be assigned a mentor who will receive a \$500 stipend. Specific duties are required by every mentor to ensure mentees receive necessary support their first two years of teaching. (Title I SW: 1,2,3) (Target Group: All) (Strategic Priorities: 1)	Campus Administrators, Cluster/Department Leaders	August 2020- June 2021	(S)Local Funds - \$3,000	06/25/21 - Completed (S) 09/25/20 - On Track
3. Opportunities to meet with new teachers will be available throughout the school year to provide instructional coaching based on their individual needs (ex. learning walks, classroom management procedures, effective teaching techniques, etc.). (Title I SW: 4,5) (Target Group: All) (Strategic Priorities: 1) (CSFs: 1,2,6,7)	Campus Administrators, Cluster/Department Leaders	October 2020 - May 2021	(S)Local Funds - \$5,000	06/25/21 - Completed (S) 09/25/20 - On Track
4. Instructional leaders will meet monthly with new teachers to provide support based on specific needs.		August 2020 - May 2021	(S)Local Funds	06/25/21 - Completed (S) 09/25/20 - On Track

# DEL RIO MIDDLE SCHOOL

**Goal 1.** The District shall maintain a safe environment, utilize quality curriculum and diverse instructional opportunities to ensure student achievement at the highest standards of excellence.

**Objective 9.** Beginning in September 2020, the campus will provide a minimum of one activity per week that promotes social, culture, interpersonal skills and experiences for staff and students.

Activity/Strategy	Person(s) Responsible	Timeline	Resources	Evaluation
1. DRMS Counseling Department will implement a programs focusing on Bullying and Cyber Bullying and present to all students. Counselors will be joining classes through Canvas. (Title I SW: 1,2) (Title I TA: 1) (Target Group: All) (Strategic Priorities: 4)	Counselors, Teachers	October 2020 - May 2021	(S)Local Funds - \$1,000	06/25/21 - Completed (S) 09/25/20 - Pending
2. Del Rio Cares will be implemented weekly with fidelity and counselors will randomly monitor classes while providing support when necessary. DRMS 8th Grade lessons are implemented the first A Day of the week during 3rd Period. (Title I SW: 1,10) (Title I TA: 1,8) (Target Group: All)	Campus Administrators, Cluster/Department Leaders, Counselors, Teachers	August 2020 - April 2021	(S)Local Funds - \$0	06/25/21 - On Track (S) 09/25/20 - On Track
3. DRMS Counseling Department will present lessons in the classrooms for attending and online students to promote self-esteem and target specific mental health concerns or trends. (Target Group: All) (Strategic Priorities: 4)		August 2020 - May 2021	(S)Local Funds	06/25/21 - On Track (S) 09/25/20 - Pending
4. As part of the Anti-Bully and Anti-Drug programs at Del Rio Middle School, counselors will provide motivational clips for teacher to utilized through out the month of October. (Title I SW: 1,2,9,10) (Target Group: All) (Strategic Priorities: 4)	Campus Administrators, Counselors	October 2020	(S)Local Funds - \$1,000	06/25/21 - On Track (S) 09/25/20 - Some Progress
5. TCHAT contact will collaborate with our district partnership through Texas Tech University to address any students that might be a candidate for outside resources or therapy. (Title I SW: 1,6) (Target Group: All) (Strategic Priorities: 4) (CSFs: 6)	Campus Administrators, Cluster/Department Leaders, Counselors, Teachers	October 2020 - May 2021	(S)Local Funds - \$2,000	06/25/21 - On Track (S) 09/25/20 - Some Progress

# DEL RIO MIDDLE SCHOOL

**Goal 1.** The District shall maintain a safe environment, utilize quality curriculum and diverse instructional opportunities to ensure student achievement at the highest standards of excellence.

**Objective 10.** The counseling department at DRMS will incorporate a Career and Readiness Curriculum that will be implemented and presented in the classrooms through presentations each 6-weeks during the 2020-2021 school year focusing on the 13 CTE Pathways offered in our district.

Activity/Strategy	Person(s) Responsible	Timeline	Resources	Evaluation
1. The DRMS Counseling Department will plan two events for the school year that will promote College and Career Readiness as allowable by CDC Guidelines. (Title I SW: 1,6) (Title I TA: 1,8) (Target Group: All) (Strategic Priorities: 4)	Campus Administrators, Counselors, Parental Aides, Parents, Teachers	Nov. 2020 - March 2021	(S)Local Funds - \$300	06/25/21 - On Track (S) 09/25/20 - Pending
2. The DRMS Counseling Department will correlate the participation of the CTE Middle School Career Fair as allowable by CDC Guidelines. (Title I SW: 1,10) (Title I TA: 8) (Target Group: 8th) (Strategic Priorities: 3,4)	Campus Administrators, Counselors	January 2021 - April 2021	(S)Local Funds - \$1,000	06/25/21 - On Track (S) 09/25/20 - Pending
3. Administration and teachers will promote College Wednesdays. Students and DRMS staff are allowed to wear their favorite college shirt every Wednesday. DRMS wants students to start thinking of the many college options available to them. College mornings will be provide monthly in our library. (Title I SW: 1,6) (Target Group: All) (Strategic Priorities: 2,3) (CSFs: 1,6)	Campus Administrators, Librarian, Teachers	August 2020 - June 2021	(S)Local Funds - \$3,500	06/25/21 - Completed (S) 09/25/20 - On Track

# DEL RIO MIDDLE SCHOOL

**Goal 1.** The District shall maintain a safe environment, utilize quality curriculum and diverse instructional opportunities to ensure student achievement at the highest standards of excellence.

**Objective 11.** Develop Action Plan to Target Three Specific Groups in Reading: Students that missed Meets by 4 or less questions, students that missed Approaches by 5 or less questions, and students that missed Approaches by 6 or more.

Activity/Strategy	Person(s) Responsible	Timeline	Resources	Evaluation
1. Analyzed 7th Grade Data to develop specific groups. Plan and implement strategies to move students forward to reaching their goal while focusing on Meets and Mastery core instruction. Target groups will be M1s, M2s, M3s, and M4s. During planning protocol sessions, teacher will specifically develop activities through their core instruction that provides rigor to ensure growth form Approaches to Meets/Mastery. (Target Group: All) (Strategic Priorities: 4)	Campus Administrators, Teachers	October 2020 - May 2021	(F) Title I	Criteria: Effective lesson plans and student achievement  06/25/21 - Completed (S) 10/09/20 - On Track 09/25/20 - Some Progress 09/25/20 - On Track

# DEL RIO MIDDLE SCHOOL

**Goal 1.** The District shall maintain a safe environment, utilize quality curriculum and diverse instructional opportunities to ensure student achievement at the highest standards of excellence.

**Objective 12.** Due to COVID-19, school will implement necessary measures to carry out curriculum and instruction for all students providing a safe learning environment.

Activity/Strategy	Person(s) Responsible	Timeline	Resources	Evaluation
1. Student instruction is provided by teachers and staff remotely working from home as needed with materials and supplies provided. (Target Group: All)	Campus Administrators, Chief Instructional Officers, Teachers	Sept. 2020-Sept. 2021	(F)Federal Grant	Criteria: Attendance logs, lesson plans, student packets  06/25/21 - Completed (S) 09/01/20 - On Track
2. Breakfast and lunch programs available and delivered at different sites within community by district transportation. (Target Group: All)	Campus Administrators, Transportation Coordinator	Sept. 2020-Sept. 2021	(F)Federal Grant	Criteria: Distribution logs  06/25/21 - Completed (S) 09/01/20 - On Track
3. Technology resources including laptops and hotspots available to students and families as needed for remote instruction. (Target Group: All)	Campus Administrators, Chief Instructional Officers	Sept. 2020-Sept. 2021	(F)Federal Grant, (S)Technology Grant	Criteria: Distribution logs  06/25/21 - Completed (S) 09/01/20 - On Track
4. Health and safety measures provided with necessary materials for all school areas including but not limited to thermometers, plexi-glass, sanitizers, masks, etc. (Target Group: All)	Campus Administrators, Health, Safety & Nutrition Coordinator	Sept. 2020-Sept. 2021	(F)Federal Grant	Criteria: Inventory and distribution logs  06/25/21 - Completed (S) 09/01/20 - On Track

# DEL RIO MIDDLE SCHOOL

**Goal 1.** The District shall maintain a safe environment, utilize quality curriculum and diverse instructional opportunities to ensure student achievement at the highest standards of excellence.

**Objective 13.** Develop and implement campus handbook addressing COVID-19 protocols and procedures for all staff and students at DRMS.

Activity/Strategy	Person(s) Responsible	Timeline	Resources	Evaluation
1. Meet with parent and teacher committee to review and make any updates to the handbook via Zoom. (Target Group: All) (Strategic Priorities: 1)	Campus Administrators, Parents, Teachers	August 2020	(S)Local Funds - \$200	06/25/21 - Completed (S) 09/25/20 - On Track
2. Train all staff in the safety protocols and procedures prior to the first day of school. (Target Group: All) (Strategic Priorities: 1,4)	Campus Administrators, Cluster/Department Leaders, Counselors, Dyslexia Teacher, Instructional Aides, Librarian, Parental Aides, Security, Special Ed Teacher, Teachers	August 2020	(S)Local Funds - \$200	06/25/21 - Completed (S) 09/25/20 - On Track

# DEL RIO MIDDLE SCHOOL

**Goal 2.** The District shall be a good steward of the community's resources - financial, human, facilities - and explore new opportunities for organizational efficiency and effectiveness.

**Objective 1.** By the end of June 2021, Del Rio Middle School will utilize 90% of local funds to directly impact student achievement.

Activity/Strategy	Person(s) Responsible	Timeline	Resources	Evaluation
1. Development of local campus budget will be aligned to campus improvement plan. Allocation of funds for instruction will be discussed during monthly leadership meetings to ensure necessary resources and materials are available for all teachers. (Title I SW: 1,2,10) (Title I TA: 1,6,7,8) (Target Group: All) (Strategic Priorities: 2,4)	Campus Administrators, Cluster/Department Leaders, Counselors, Librarian, Teachers	October 2020 - June 2021	(S)Local Funds - \$75,000	06/25/21 - On Track (S) 09/25/20 - On Track
2. DRMS will explore opportunities to collaborate with the community and create financial resources with more organizational flexibility. (Title I SW: 2,10) (Title I TA: 8) (Target Group: All) (Strategic Priorities: 1,2,3,4)	Campus Administrators, Cluster/Department Leaders	August 2020 - June 2021	(S)Local Funds - \$10,000	06/25/21 - On Track (S) 09/25/20 - Some Progress
3. Leadership team will take the initiative to collaborate and develop a plan to determine allocation of funds based on specific student needs. Additional resources were provided by the district for instructional resources. At this time resources have been purchased for PE, Math, and Social Studies. (Title I SW: 1,2,8,10) (Target Group: All) (Strategic Priorities: 1,2,3,4) (CSFs: 1,3,4,5,6,7)	Campus Administrators, Chief Instructional Officers, Teachers	September 2020 - May 2021	(O)Local Districts - \$5,000	06/25/21 - On Track (S) 09/25/20 - On Track



# DEL RIO MIDDLE SCHOOL

**Goal 3.** The District shall provide meaningful and effective communication in a timely manner to all parents, students, staff and District Partners.

**Objective 1.** Beginning August, the campus will organize weekly orientations via zoom to inform parents of safety protocols and procedures for students attending and informational sessions concerning instructional platform.

Activity/Strategy	Person(s) Responsible	Timeline	Resources	Evaluation
1. Hold an Open House in October through media that will encourage parents to be well inform of their child's progress through their selected learning model. (Title I SW: 1,2,6,10) (Title I TA: 8) (Target Group: All) (Strategic Priorities: 2,3,4)	Campus Administrators, Cluster/Department Leaders, Counselors, Librarian, Parental Aides, Parents, Teachers	October 2020	(F)Title I, (S)Local Funds - \$1,000	07/02/21 - Completed (S) 09/25/20 - Pending
2. Conduct monthly parental meetings via Zoom based on data from the comprehensive needs assessment (Gradebook, STAAR, Mental Health, College Readiness, Canvas, Parent Portal, etc.) (Title I SW: 1,2,6,10) (Title I TA: 7) (Target Group: All) (Strategic Priorities: 2)	Campus Administrators, Parental Aides	August 2020- July 2021	(F)Title I - \$1,000	07/02/21 - Completed (S) 09/25/20 - Significant Progress
3. Monthly calendar will be developed and sent out to parents and staff. It will list all the extra-curricular activities, events, meetings, trainings along with times and locations. This will also be listed listed on SFDRCIDSD website and Facebook. (Title I SW: 1,2,6,10) (Target Group: All) (Strategic Priorities: 2,3)	Campus Administrators, Cluster/Department Leaders, Counselors, Librarian, Parental Aides, Teachers	October 2020 - May 2021	(S)Local Funds - \$1,500	07/02/21 - Completed (S) 09/25/20 - Pending

# DEL RIO MIDDLE SCHOOL

**Goal 4.** The District shall study the current level of satisfaction which will lead to a plan for improvement of Del Rio Middle School.

**Objective 1.** With the restructure of DRMS, campus principal will focus on specific grade level to ensure student progress for all students.

Activity/Strategy	Person(s) Responsible	Timeline	Resources	Evaluation
1. Instructional leaders will be assigned to specific core areas to provide coaching during daily planning protocol sessions. (Target Group: All) (Strategic Priorities: 1,2,3,4)	Campus Administrators, Cluster/Department Leaders, Teachers	August 2020-May 2021	(F)Title I - \$6,000, (O)Local Districts - \$6,000	Criteria: Three percent increase in over campus rating.  07/02/21 - Completed (S) 09/25/20 - On Track 01/09/20 - Pending
2. Implement district demerit system at DRMS. Campus has already seen over 40% decrease in discipline referrals from 2018-2019 to 2019-2020 school year. (Target Group: All) (Strategic Priorities: 3,4)	Attendance Staff, Campus Administrators, Cluster/Department Leaders, Counselors, Librarian, Parents, Teachers	August 2020 - June 2021		Criteria: Decrease of at least 25% of discipline referrals from 2018-2019.  07/02/21 - On Track (S) 09/25/20 - On Track

# DEL RIO MIDDLE SCHOOL

**Goal 5.** The District shall prioritize reading as a skill for lifelong learning.

**Objective 1.** Focus on creating a solid 90-minute ELA block for all students.

Activity/Strategy	Person(s) Responsible	Timeline	Resources	Evaluation
1. ELA department will receive adequate support in developing proficient readers through online instruction. (Target Group: All) (Strategic Priorities: 2,3,4)	Campus Administrators, Teachers	August 2020 - May 2021	(F)Title I - \$12,000, (O)Local Districts - \$8,000	Criteria: Decrease of at least 5% of the number of students not meeting Reading SSI requirement from the previous year.  07/02/21 - On Track (S) 09/25/20 - On Track
2. Teacher will receive the instructional support in effective planning. TEKS Guide will be utilized prior to creating activities/lessons during planning protocol. (Target Group: All) (Strategic Priorities: 1,2,3,4)	Campus Administrators, Cluster/Department Leaders, Teachers	October 2020- May 2020	(O)Local Districts	Criteria: Student Growth for all students  07/02/21 - On Track (S) 09/25/20 - On Track
3. Create a library that is the core of the campus. Promote and encourage students to participate in events that are planned by the DRMS Library Staff (college mornings, million word readers, etc.). Safety protocols are in place to ensure COVID-19 recommendations are followed. (Target Group: All)	Librarian, Teachers	October 2020 - May 2021	(S)Local Funds - \$3,000	07/02/21 - On Track (S) 09/25/20 - On Track

## 8th Grade DRMS

# Comprehensive Needs Assessment Summary –

2020-2021

<b>Utilized Data Sources: These will automatically populate from your CNA worksheets</b>		
SFDRCSID 2019 STAAR RESULTS	TAPR REPORT	2020 Benchmark Results
Growth Report/Student Progress	CLIMATE SURVEY	PLANNING PROTOCOL
STAAR PERFORMANCE REPORT	Vacancies	STUDENT DISCIPLINE
WORKING CONDITION	CAMPUS ENVIRONMENT	DEMERIT SYSTEM
TAPR	CTE DATA	Comparison Performance Report
CTE Courses	FLYERS	PARENTAL VISIT LOGS
CALENDARS	SOCIAL MEDIA	TECHNOLOGY INVENTORY
CURRENT PROJECTED FACILITY NEEDS	ENROLLMENT DATA	TECHNOLOGY INFRASTRUCTURE

<b>Area Reviewed</b>	<b>Summary of Strengths</b> What were the identified strengths?	<b>Summary of Needs</b> What were the identified needs?	<b>Priorities</b> What are the priorities for the campus, including how federal and state program funds will be used?
<b>Academic Achievement</b>	Planning Protocol Daily for all four content areas RTI Days that includes Professional Development Growth in all contents and categories from 2018 - 2019 Increase Teacher and Student Attendance from previous year	Balance special populations (specifically in co-teach classes)	Increase Teacher and Student Attendance
<b>Staff Quality</b>	Teacher Retention Highly Qualified Teachers Planning Time for non-core contents Salary Increase for ALL Employees	Laptops for ALL students and teachers (HBI) Less principal movement (administration)	Less Principal Movement
<b>School Climate/ Safe &amp; Healthy Schools</b>	Security guards on duty Implementation of Demerit System at DRMS Del Rio Cares Implemented with Fidelity Safety drills and awareness Outside doors kept locked More police officers on campus	Develop Action Plan to practice social distancing Plan for daily sanitation	Continue Demerit System

## 8th Grade DRMS

<b>Area Reviewed</b>	<b>Summary of Strengths</b> What were the identified strengths?	<b>Summary of Needs</b> What were the identified needs?	<b>Priorities</b> What are the priorities for the campus, including how federal and state program funds will be used?
<b>College &amp; Career Readiness/ Graduation/ Dropout Reduction</b>	<p>Student Progress in ALL Contents</p> <p>Increase of students enrolled in High Schools Courses (English I, Algebra I, Spanish I, etc.)</p> <p>Increase in the Masters Category</p> <p>Career Portal Course (CTE)</p>	<p>Drop out rate higher than state average</p> <p>Number of students below reading level</p>	<p>Increase Number of Students Participating in CTE Programs at DRMS</p>
<b>Family and Community Involvement</b>	<p>Building Strong Families Program</p> <p>Success Rate of HBI at DRMS</p> <p>Monthly Calendars for Students/Parents</p> <p>Social Media to Keep Parents Informed</p>	<p>Decrease of Parental Meetings from 2018/2019 to 2019/2020</p> <p>Promote VIP Group to Support the Campus</p>	<p>Develop More Parent Committees</p>
<b>District/Campus Commitments</b>	<p>Staff Committed to the Mission at DRMS</p> <p>High Percentage of Students Participating in our breakfast and lunch program compared to basic technology provided to all staff (with a quick turn around in completing work orders)</p>	<p>Increase number of devices for students and staff at DRMS</p> <p>Replace Department Colored Printers</p> <p>Access to more websites</p>	<p>Improve Internet Service at DRMS</p>

**NOTE:** Activities funded through federal programs and State Compensatory Education funds should be identified in the Needs and/or Priorities sections above. The Comprehensive Needs Assessment does not contain what you will do to meet the needs. It is simply a report of the data examined and the conclusions drawn from that data. Needs identified in the CNA will lead to the goals, objectives, and strategies in the DIP/CIP.

## Introduction

---

The purpose of engaging in a CNA is to bring focus and accountability to reform activities. Further, state and federal law requires districts and schools to participate in a CNA that focuses on specific achievement indicators and appropriate measures of performance (TEC 11.252, ESSA: Sec. 1114(b)). This template will serve as a blueprint for conducting a CNA and provide a summary of the CNA for planning/compliance purposes.



## Organizational Structure

---

TEA does not prescribe a specific organizational structure for the CNA. Therefore, these options have been created by ESC staff at Region 15. Remember, these are just suggestions and each LEA/campus should adjust to meet their specific needs. This organizational structure focuses on 6 factors:

1. Academic Achievement
2. Staff Quality
3. School Climate/Safe & Healthy Schools
4. College & Career/Graduation/Dropout Reduction
5. Parent and Community Engagement
6. District/Campus Commitments

## Using this template

---

This template is meant to be a starting point for reviewing data, recognizing strengths and needs, and prioritizing goals for a district or campus CNA. Each tab focuses on one of the six factors (above). The final tab will auto-fill with the recognized "needs" under each factor and provide a summary sheet for the CNA.

## Organizing the Decision Making Committee (TEC§11.251(e))

---

- Ensure that membership is an appropriate representation of the community's diversity
- At least 2/3 of the elected staff must be classroom teachers
- At least one professional staff member must be an educator whose primary responsibility is educating students with disabilities
- The frequency of planning meetings is determined by the board

# Site Based Committee Sign In

District: 8th Grade DRMS 2020-2021

Date: 18-May-20

Role	Name	Signature
Parent	Gloria Rubio	
Parent	Grizelda Gomez	
Business Representative	Juan Vicuna	
Business Representative	Mariana Laing	
Community Representative	Claudia Lopez	
Community Representative	Wayne Richardson	
Teacher	Melanie Gee	
Teacher	Michelle Gomez	
Teacher	Maria Sigley	
Teacher	Claudia Faz	
Teacher	Teresa Garcia	
Teacher	Rosella Ramon	
Teacher	Angelica Rivera	
Teacher	Margo Baker	
District Personnel	Roger Soto	
District Personnel	Silvia Wille	
District Personnel	Annette Giridy	
Principal	Cindy Salas	

*\* Refer to local policies for specific attendance/role requirements for a site-based committee.*

*\*\* Please note that ESSA requires the attendance of more than one parent at the site-based committee. This parent cannot be an employee of the district. Parents cannot also be considered as community members on the committee.*

# 2019-20 Texas Academic Performance Report

District Name: **SAN FELIPE-DEL RIO CISD**

Campus Name: **DEL RIO MIDDLE 8TH GRADE CAMPUS**

Campus Number: **233901043**

2020 Accountability Rating: **Not Rated: Declared State of Disaster**



This page is intentionally blank.

District Name: SAIV FELIPE-DEL RIO CISD  
 Campus Name: DEL RIO MIDDLE 8TH GRADE CAMPUS  
 Campus Number: 233901043

Texas Education Agency  
**Texas Academic Performance Report**  
**2019-20 Campus STAAR Performance**

Total Students: 770  
 Grade Span: 08 - 08  
 School Type: Middle

Please note that due to the cancellation of spring 2020 State of Texas Assessments of Academic Readiness (STAAR) due to the COVID-19 pandemic, the Performance section of this year's report is not updated.

	State	District	Campus	African American	Hispanic	White	American Indian	Asian	Pacific Islander	Two or More Races	Special Ed (Current)	Special Ed (Former)	Continuously Enrolled	Non-Continuously Enrolled	Econ Disadv	EL (Current & Monitored)	
<b>STAAR Performance Rates by Tested Grade, Subject, and Performance Level</b>																	
<b>Grade 7 Reading</b>																	
At Approaches Grade Level or Above	2019	76%	70%	<b>70%</b>	*	69%	84%	-	*	-	*	29%	80%	69%	72%	64%	43%
	2018	74%	61%	<b>61%</b>	20%	61%	67%	-	*	-	-	29%	56%	61%	62%	56%	31%
At Meets Grade Level or Above	2019	49%	41%	<b>41%</b>	*	40%	59%	-	*	-	*	15%	40%	40%	48%	34%	13%
	2018	48%	36%	<b>36%</b>	0%	35%	56%	-	*	-	-	15%	44%	36%	34%	29%	9%
At Masters Grade Level	2019	29%	24%	<b>24%</b>	*	23%	47%	-	*	-	*	4%	30%	22%	35%	18%	4%
	2018	29%	20%	<b>20%</b>	0%	19%	41%	-	*	-	-	2%	33%	20%	21%	13%	4%
<b>Grade 7 Mathematics</b>																	
At Approaches Grade Level or Above	2019	75%	71%	<b>71%</b>	*	71%	84%	-	*	-	*	39%	80%	71%	73%	67%	55%
	2018	72%	61%	<b>61%</b>	20%	60%	71%	-	*	-	-	26%	44%	62%	53%	55%	41%
At Meets Grade Level or Above	2019	43%	37%	<b>37%</b>	*	35%	59%	-	*	-	*	12%	50%	36%	41%	31%	12%
	2018	40%	29%	<b>29%</b>	0%	28%	46%	-	*	-	-	13%	11%	29%	26%	22%	12%
At Masters Grade Level	2019	17%	14%	<b>14%</b>	*	13%	22%	-	*	-	*	3%	0%	14%	14%	10%	1%
	2018	18%	11%	<b>11%</b>	0%	11%	21%	-	*	-	-	1%	0%	11%	9%	8%	6%
<b>Grade 7 Writing</b>																	
At Approaches Grade Level or Above	2019	70%	61%	<b>61%</b>	*	60%	75%	-	*	-	*	16%	90%	61%	61%	54%	34%
	2018	69%	59%	<b>59%</b>	40%	59%	61%	-	*	-	-	21%	22%	59%	56%	55%	27%
At Meets Grade Level or Above	2019	42%	31%	<b>31%</b>	*	31%	41%	-	*	-	*	10%	40%	32%	29%	25%	10%
	2018	43%	31%	<b>31%</b>	20%	30%	54%	-	*	-	-	10%	11%	31%	26%	25%	8%
At Masters Grade Level	2019	18%	12%	<b>12%</b>	*	11%	19%	-	*	-	*	4%	0%	11%	15%	8%	1%
	2018	15%	8%	<b>8%</b>	0%	8%	18%	-	*	-	-	1%	11%	9%	6%	5%	2%
<b>Grade 8 Reading^</b>																	
At Approaches Grade Level or Above	2019	86%	67%	<b>70%</b>	80%	70%	43%	-	*	-	-	29%	83%	69%	72%	68%	48%
	2018	86%	66%	<b>66%</b>	*	66%	85%	*	-	-	*	26%	*	67%	64%	63%	43%
At Meets Grade Level or Above	2019	55%	30%	<b>33%</b>	20%	33%	36%	-	*	-	-	16%	50%	32%	35%	30%	11%
	2018	49%	18%	<b>18%</b>	*	18%	23%	*	-	-	*	16%	*	18%	17%	16%	9%
At Masters Grade Level	2019	28%	9%	<b>9%</b>	0%	9%	29%	-	*	-	-	4%	33%	9%	9%	8%	4%
	2018	27%	5%	<b>5%</b>	*	5%	15%	*	-	-	*	4%	*	5%	4%	4%	1%
<b>Grade 8 Mathematics^</b>																	
At Approaches Grade Level or Above	2019	88%	77%	<b>77%</b>	80%	77%	65%	-	*	-	-	42%	83%	77%	76%	75%	61%
	2018	86%	76%	<b>76%</b>	*	76%	87%	*	*	-	*	44%	*	78%	66%	73%	61%
At Meets Grade Level or Above	2019	57%	39%	<b>39%</b>	40%	39%	35%	-	*	-	-	18%	33%	39%	42%	36%	24%
	2018	51%	34%	<b>34%</b>	*	34%	53%	*	*	-	*	21%	*	35%	31%	31%	16%
At Masters Grade Level	2019	17%	8%	<b>8%</b>	0%	8%	6%	-	*	-	-	5%	17%	8%	7%	7%	5%
	2018	15%	7%	<b>7%</b>	*	7%	7%	*	*	-	*	6%	*	7%	8%	6%	3%
<b>Grade 8 Science</b>																	
At Approaches Grade Level or Above	2019	81%	68%	<b>68%</b>	60%	68%	81%	-	*	-	-	29%	67%	70%	58%	63%	37%

District Name: SAN FELIPE-DEL RIO CISD  
 Campus Name: DEL RIO MIDDLE 8TH GRADE CAMPUS  
 Campus Number: 233901043

Texas Education Agency  
 Texas Academic Performance Report  
 2019-20 Campus STAAR Performance

Total Students: 770  
 Grade Span: 08 - 08  
 School Type: Middle

Please note that due to the cancellation of spring 2020 State of Texas Assessments of Academic Readiness (STAAR) due to the COVID-19 pandemic, the Performance section of this year's report is not updated.

		State	District	Campus	African American	Hispanic	White	American Indian	Asian	Pacific Islander	Two or More Races	Special Ed (Current)	Special Ed (Former)	Continuously Enrolled	Non-Continuously Enrolled	Econ Disadv	EL (Current & Monitored)
At Meets Grade Level or Above	2018	76%	56%	58%	*	57%	88%	*	*	-	*	24%	100%	59%	50%	52%	23%
	2019	51%	35%	35%	20%	34%	65%	-	*	-	-	19%	17%	36%	29%	28%	12%
	2018	52%	28%	30%	*	29%	54%	*	*	-	*	17%	17%	30%	26%	23%	7%
	2019	25%	14%	14%	0%	13%	19%	-	*	-	-	3%	0%	14%	13%	9%	5%
At Masters Grade Level	2018	28%	11%	12%	*	11%	35%	*	*	-	*	7%	17%	13%	7%	8%	1%
	2019	28%	11%	12%	*	11%	35%	*	*	-	*	7%	17%	13%	7%	8%	1%
Grade 8 Social Studies																	
At Approaches Grade Level or Above	2019	69%	54%	56%	20%	56%	65%	-	*	-	-	27%	83%	55%	60%	48%	23%
	2018	65%	50%	51%	*	50%	81%	*	*	-	*	23%	100%	51%	48%	47%	24%
At Meets Grade Level or Above	2019	37%	23%	25%	0%	24%	38%	-	*	-	-	13%	17%	24%	27%	18%	9%
	2018	36%	19%	19%	*	19%	38%	*	*	-	*	14%	33%	20%	17%	15%	4%
At Masters Grade Level	2019	21%	12%	13%	0%	13%	19%	-	*	-	-	1%	0%	12%	20%	9%	2%
	2018	21%	9%	9%	*	9%	31%	*	*	-	*	5%	17%	10%	6%	7%	2%
End of Course English I																	
At Approaches Grade Level or Above	2019	68%	65%	99%	-	99%	100%	-	*	-	-	-	*	99%	100%	99%	100%
	2018	65%	58%	95%	-	96%	93%	-	*	-	-	*	*	96%	91%	94%	100%
At Meets Grade Level or Above	2019	50%	43%	92%	-	92%	100%	-	*	-	-	-	*	92%	96%	88%	83%
	2018	44%	33%	80%	-	79%	93%	-	*	-	-	*	*	81%	65%	79%	80%
At Masters Grade Level	2019	11%	6%	28%	-	26%	50%	-	*	-	-	-	*	29%	17%	18%	0%
	2018	7%	2%	11%	-	10%	29%	-	*	-	-	*	*	9%	22%	5%	0%
End of Course Algebra I																	
At Approaches Grade Level or Above	2019	85%	82%	100%	-	100%	100%	-	*	-	-	-	-	100%	100%	100%	100%
	2018	83%	78%	100%	-	100%	100%	-	*	-	-	*	*	100%	100%	100%	*
At Meets Grade Level or Above	2019	61%	56%	93%	-	93%	100%	-	*	-	-	-	-	93%	93%	88%	100%
	2018	55%	47%	93%	-	92%	100%	-	*	-	-	*	*	92%	100%	94%	*
At Masters Grade Level	2019	37%	31%	75%	-	74%	89%	-	*	-	-	-	-	76%	73%	69%	60%
	2018	32%	22%	72%	-	72%	73%	-	*	-	-	*	*	71%	86%	81%	*
All Grades All Subjects																	
At Approaches Grade Level or Above	2019	78%	72%	69%	72%	69%	77%	-	82%	-	*	30%	82%	69%	69%	64%	44%
	2018	77%	68%	63%	39%	63%	78%	*	100%	-	100%	28%	65%	64%	58%	59%	36%
At Meets Grade Level or Above	2019	50%	40%	38%	24%	37%	55%	-	73%	-	*	14%	38%	37%	39%	31%	14%
	2018	48%	36%	32%	3%	31%	54%	*	100%	-	50%	16%	31%	33%	27%	26%	10%
At Masters Grade Level	2019	24%	17%	16%	3%	15%	29%	-	55%	-	*	4%	11%	15%	18%	11%	3%
	2018	22%	13%	12%	0%	11%	29%	*	82%	-	13%	4%	16%	12%	10%	8%	3%
All Grades ELA/Reading																	
At Approaches Grade Level or Above	2019	75%	69%	73%	88%	73%	78%	-	*	-	*	29%	82%	73%	75%	69%	47%
	2018	74%	66%	68%	44%	68%	78%	*	*	-	*	29%	60%	69%	66%	63%	38%
At Meets Grade Level or Above	2019	48%	38%	44%	13%	43%	62%	-	*	-	*	15%	47%	43%	49%	36%	14%
	2018	46%	35%	36%	0%	35%	57%	*	*	-	*	17%	53%	37%	30%	30%	10%
At Masters Grade Level	2019	21%	13%	19%	0%	18%	43%	-	*	-	*	4%	29%	18%	24%	14%	4%
	2018	19%	11%	13%	0%	13%	31%	*	*	-	*	2%	27%	13%	14%	9%	2%

Texas Education Agency  
**Texas Academic Performance Report**  
**2019-20 Campus STAAR Performance**

Please note that due to the cancellation of spring 2020 State of Texas Assessments of Academic Readiness (STAAR) due to the COVID-19 pandemic, the Performance section of this year's report is not updated.

		State	District	Campus	African American	Hispanic	White	American Indian	Asian	Pacific Islander	Two or More Races	Special Ed (Current)	Special Ed (Former)	Continuously Enrolled	Non-Continuously Enrolled	Econ Disadv	EL (Current & Monitored)
<b>All Grades Mathematics</b>																	
At Approaches Grade Level or Above	2019	82%	77%	<b>76%</b>	88%	76%	81%	-	*	-	*	41%	81%	76%	76%	72%	58%
	2018	81%	73%	<b>70%</b>	33%	70%	81%	*	*	-	*	35%	67%	71%	61%	65%	50%
At Meets Grade Level or Above	2019	52%	43%	<b>42%</b>	38%	41%	59%	-	*	-	*	15%	44%	42%	45%	36%	19%
	2018	50%	37%	<b>36%</b>	0%	35%	59%	*	*	-	*	17%	27%	37%	31%	29%	14%
At Masters Grade Level	2019	26%	20%	<b>16%</b>	0%	16%	28%	-	*	-	*	4%	6%	16%	16%	11%	4%
	2018	24%	15%	<b>14%</b>	0%	13%	28%	*	*	-	*	4%	7%	14%	12%	10%	5%
<b>All Grades Writing</b>																	
At Approaches Grade Level or Above	2019	68%	58%	<b>61%</b>	*	60%	75%	-	*	-	*	16%	90%	61%	61%	54%	34%
	2018	66%	55%	<b>59%</b>	40%	59%	61%	-	*	-	-	21%	22%	59%	56%	55%	27%
At Meets Grade Level or Above	2019	38%	28%	<b>31%</b>	*	31%	41%	-	*	-	*	10%	40%	32%	29%	25%	10%
	2018	41%	29%	<b>31%</b>	20%	30%	54%	-	*	-	-	10%	11%	31%	26%	25%	8%
At Masters Grade Level	2019	14%	8%	<b>12%</b>	*	11%	19%	-	*	-	*	4%	0%	11%	15%	8%	1%
	2018	13%	6%	<b>8%</b>	0%	8%	18%	-	*	-	-	1%	11%	9%	6%	5%	2%
<b>All Grades Science</b>																	
At Approaches Grade Level or Above	2019	81%	75%	<b>68%</b>	60%	68%	81%	-	*	-	-	29%	67%	70%	58%	63%	37%
	2018	80%	70%	<b>58%</b>	*	57%	88%	*	*	-	*	24%	100%	59%	50%	52%	23%
At Meets Grade Level or Above	2019	54%	43%	<b>35%</b>	20%	34%	65%	-	*	-	-	19%	17%	36%	29%	28%	12%
	2018	51%	38%	<b>30%</b>	*	29%	54%	*	*	-	*	17%	17%	30%	26%	23%	7%
At Masters Grade Level	2019	25%	16%	<b>14%</b>	0%	13%	19%	-	*	-	-	3%	0%	14%	13%	9%	5%
	2018	23%	14%	<b>12%</b>	*	11%	35%	*	*	-	*	7%	17%	13%	7%	8%	1%
<b>All Grades Social Studies</b>																	
At Approaches Grade Level or Above	2019	81%	73%	<b>56%</b>	20%	56%	65%	-	*	-	-	27%	83%	55%	60%	48%	23%
	2018	78%	69%	<b>51%</b>	*	50%	81%	*	*	-	*	23%	100%	51%	48%	47%	24%
At Meets Grade Level or Above	2019	55%	47%	<b>25%</b>	0%	24%	38%	-	*	-	-	13%	17%	24%	27%	18%	9%
	2018	53%	42%	<b>19%</b>	*	19%	38%	*	*	-	*	14%	33%	20%	17%	15%	4%
At Masters Grade Level	2019	33%	27%	<b>13%</b>	0%	13%	19%	-	*	-	-	1%	0%	12%	20%	9%	2%
	2018	31%	23%	<b>9%</b>	*	9%	31%	*	*	-	*	5%	17%	10%	6%	7%	2%

District Name: SAN FELIPE-DEL RIO CISD  
 Campus Name: DEL RIO MIDDLE 8TH GRADE CAMPUS  
 Campus Number: 233901043

Texas Education Agency  
**Texas Academic Performance Report**  
**2019-20 Campus Progress**

Total Students: 770  
 Grade Span: 08 - 08  
 School Type: Middle

Please note that due to the cancellation of spring 2020 State of Texas Assessments of Academic Readiness (STAAR) due to the COVID-19 pandemic, the Performance section of this year's report is not updated.

		State	District	Campus	African American	Hispanic	White	American Indian	Asian	Pacific Islander	Two or More Races	Special Ed (Current)	Special Ed (Former)	Continuously Enrolled	Non-Continuously Enrolled	Econ Disadv	EL (Current & Monitored)
<b>School Progress Domain - Academic Growth Score by Grade and Subject</b>																	
Grade 7 ELA/Reading	2019	77	72	<b>72</b>	*	72	73	-	*	-	*	72	50	71	79	71	67
	2018	76	67	<b>67</b>	20	67	79	-	*	-	-	51	63	67	67	65	62
Grade 7 Mathematics	2019	62	44	<b>44</b>	*	43	60	-	*	-	*	23	45	43	49	41	37
	2018	67	52	<b>52</b>	0	52	61	-	*	-	-	34	13	53	44	49	47
Grade 8 ELA/Reading	2019	77	75	<b>75</b>	70	76	57	-	*	-	-	54	75	76	66	74	75
	2018	79	77	<b>77</b>	*	77	83	*	-	-	*	70	*	77	75	77	76
Grade 8 Mathematics	2019	82	83	<b>83</b>	100	83	82	-	*	-	-	64	83	83	84	82	76
	2018	81	81	<b>81</b>	*	81	73	*	*	-	*	76	*	82	80	80	80
End of Course Algebra I	2019	75	77	<b>90</b>	-	90	86	-	*	-	-	-	-	90	92	85	60
	2018	72	66	<b>88</b>	-	88	82	-	*	-	-	*	*	87	100	90	*
All Grades Both Subjects	2019	69	70	<b>68</b>	72	68	69	-	80	-	*	53	59	68	69	67	63
	2018	69	67	<b>69</b>	41	69	73	*	*	-	*	57	52	69	67	67	66
All Grades ELA/Reading	2019	68	68	<b>73</b>	75	74	68	-	*	-	*	64	59	73	74	72	71
	2018	69	66	<b>71</b>	50	71	80	*	*	-	*	60	67	71	71	70	68
All Grades Mathematics	2019	70	72	<b>64</b>	69	64	70	-	*	-	*	41	59	64	66	62	56
	2018	70	68	<b>67</b>	31	67	68	*	*	-	*	54	39	67	64	65	63

District Name: SAN FELIPE-DEL RIO CISD  
 Campus Name: DEL RIO MIDDLE 8TH GRADE CAMPUS  
 Campus Number: 233901043

Texas Education Agency  
**Texas Academic Performance Report**  
**2019-20 Campus Prior Year and Student Success Initiative**

Total Students: 770  
 Grade Span: 08 - 08  
 School Type: Middle

Please note that due to the cancellation of spring 2020 State of Texas Assessments of Academic Readiness (STAAR) due to the COVID-19 pandemic, the Performance section of this year's report is not updated.

		State	District	Campus	African American	Hispanic	White	American Indian	Asian	Pacific Islander	Two or More Races	Special Ed	Econ Disadv	EL (Current)
<b>Progress of Prior-Year Non-Proficient Students</b>														
<b>Sum of Grades 4-8</b>														
Reading	2019	41%	39%	<b>40%</b>	*	41%	17%	-	-	-	-	13%	41%	26%
	2018	38%	32%	<b>33%</b>	*	33%	*	-	-	-	-	8%	31%	21%
Mathematics	2019	45%	45%	<b>47%</b>	*	47%	33%	-	-	-	-	20%	45%	34%
	2018	47%	44%	<b>40%</b>	*	41%	*	-	-	-	-	19%	39%	33%
<b>Student Success Initiative</b>														
<b>Grade 8 Reading</b>														
Students Meeting Approaches Grade Level on First STAAR Administration														
	2019	78%	58%	<b>61%</b>	80%	61%	46%	-	*	-	-	20%	59%	25%
Students Requiring Accelerated Instruction														
	2019	22%	42%	<b>39%</b>	20%	39%	54%	-	*	-	-	80%	41%	75%
STAAR Cumulative Met Standard														
	2019	85%	66%	<b>68%</b>	80%	68%	46%	-	*	-	-	22%	67%	35%
STAAR Non-Proficient Students Promoted by Grade Placement Committee														
	2018	99%	68%	<b>68%</b>	-	68%	*	-	-	-	-	100%	69%	75%
<b>Grade 8 Mathematics</b>														
Students Meeting Approaches Grade Level on First STAAR Administration														
	2019	82%	64%	<b>64%</b>	40%	64%	69%	-	*	-	-	29%	62%	41%
Students Requiring Accelerated Instruction														
	2019	18%	36%	<b>36%</b>	60%	36%	31%	-	*	-	-	71%	38%	59%
STAAR Cumulative Met Standard														
	2019	88%	76%	<b>76%</b>	80%	76%	69%	-	*	-	-	37%	74%	53%
STAAR Non-Proficient Students Promoted by Grade Placement Committee														
	2018	98%	76%	<b>76%</b>	-	76%	*	-	-	-	*	100%	76%	74%

District Name: SAN FELIPE-DEL RIO CISD  
 Campus Name: DEL RIO MIDDLE 8TH GRADE CAMPUS  
 Campus Number: 233901043

Texas Education Agency  
**Texas Academic Performance Report**  
**2019-20 Campus STAAR Performance**  
 Bilingual Education/English as a Second Language

Total Students: 770  
 Grade Span: 08 - 08  
 (Current EL Students)

Please note that due to the cancellation of spring 2020 State of Texas Assessments of Academic Readiness (STAAR) due to the COVID-19 pandemic, the Performance section of this year's report is not updated.

		State	District	Campus	Bilingual Education	BE-Trans Early Exit	BE-Trans Late Exit	BE-Dual Two-Way	BE-Dual One-Way	ESL	ESL Content	ESL Pull-Out	LEP No Services	LEP with Services	Total EL
<b>STAAR Performance Rate by Subject and Performance Level</b>															
All Grades All Subjects															
At Approaches Grade Level or Above	2019	78%	72%	69%	-	-	-	-	-	33%	-	33%	29%	33%	33%
	2018	77%	68%	63%	-	-	-	-	-	24%	-	24%	28%	24%	24%
At Meets Grade Level or Above	2019	50%	40%	38%	-	-	-	-	-	8%	-	8%	2%	8%	8%
	2018	48%	36%	32%	-	-	-	-	-	4%	-	4%	0%	4%	4%
At Masters Grade Level	2019	24%	17%	16%	-	-	-	-	-	2%	-	2%	0%	2%	2%
	2018	22%	13%	12%	-	-	-	-	-	0%	-	0%	0%	0%	0%
All Grades ELA/Reading															
At Approaches Grade Level or Above	2019	75%	69%	73%	-	-	-	-	-	37%	-	37%	23%	37%	36%
	2018	74%	66%	68%	-	-	-	-	-	24%	-	24%	25%	24%	24%
At Meets Grade Level or Above	2019	48%	38%	44%	-	-	-	-	-	7%	-	7%	0%	7%	7%
	2018	46%	35%	36%	-	-	-	-	-	3%	-	3%	0%	3%	3%
At Masters Grade Level	2019	21%	13%	19%	-	-	-	-	-	2%	-	2%	0%	2%	2%
	2018	19%	11%	13%	-	-	-	-	-	0%	-	0%	0%	0%	0%
All Grades Mathematics															
At Approaches Grade Level or Above	2019	82%	77%	76%	-	-	-	-	-	48%	-	48%	62%	48%	49%
	2018	81%	73%	70%	-	-	-	-	-	41%	-	41%	50%	41%	42%
At Meets Grade Level or Above	2019	52%	43%	42%	-	-	-	-	-	13%	-	13%	0%	13%	12%
	2018	50%	37%	36%	-	-	-	-	-	7%	-	7%	0%	7%	6%
At Masters Grade Level	2019	26%	20%	16%	-	-	-	-	-	2%	-	2%	0%	2%	2%
	2018	24%	15%	14%	-	-	-	-	-	1%	-	1%	0%	1%	1%
All Grades Writing															
At Approaches Grade Level or Above	2019	68%	58%	61%	-	-	-	-	-	25%	-	25%	0%	25%	23%
	2018	66%	55%	59%	-	-	-	-	-	13%	-	13%	0%	13%	13%
At Meets Grade Level or Above	2019	38%	28%	31%	-	-	-	-	-	3%	-	3%	0%	3%	3%
	2018	41%	29%	31%	-	-	-	-	-	1%	-	1%	0%	1%	1%
At Masters Grade Level	2019	14%	8%	12%	-	-	-	-	-	1%	-	1%	0%	1%	1%
	2018	13%	6%	8%	-	-	-	-	-	1%	-	1%	0%	1%	1%
All Grades Science															
At Approaches Grade Level or Above	2019	81%	75%	68%	-	-	-	-	-	26%	-	26%	17%	26%	25%
	2018	80%	70%	58%	-	-	-	-	-	10%	-	10%	20%	10%	11%
At Meets Grade Level or Above	2019	54%	43%	35%	-	-	-	-	-	7%	-	7%	17%	7%	8%
	2018	51%	38%	30%	-	-	-	-	-	3%	-	3%	0%	3%	3%
At Masters Grade Level	2019	25%	16%	14%	-	-	-	-	-	2%	-	2%	0%	2%	2%
	2018	23%	14%	12%	-	-	-	-	-	0%	-	0%	0%	0%	0%
All Grades Social Studies															
At Approaches Grade Level or Above	2019	81%	73%	56%	-	-	-	-	-	14%	-	14%	17%	14%	14%
	2018	78%	69%	51%	-	-	-	-	-	14%	-	14%	20%	14%	14%
At Meets Grade Level or Above	2019	55%	47%	25%	-	-	-	-	-	5%	-	5%	0%	5%	5%
	2018	53%	42%	19%	-	-	-	-	-	2%	-	2%	0%	2%	2%
At Masters Grade Level	2019	33%	27%	13%	-	-	-	-	-	0%	-	0%	0%	0%	0%
	2018	31%	23%	9%	-	-	-	-	-	1%	-	1%	0%	1%	1%
<b>School Progress Domain - Academic Growth Score</b>															
All Grades Both Subjects	2019	69%	70%	68%	-	-	-	-	-	64%	-	64%	60%	64%	64%
	2018	69%	67%	69%	-	-	-	-	-	62%	-	62%	83%	62%	63%
All Grades ELA/Reading	2019	68%	68%	73%	-	-	-	-	-	72%	-	72%	62%	72%	71%
	2018	69%	66%	71%	-	-	-	-	-	67%	-	67%	75%	67%	67%
All Grades Mathematics	2019	70%	72%	64%	-	-	-	-	-	56%	-	56%	58%	56%	56%

District Name: SAN FELIPE-DEL RIO CISD  
 Campus Name: DEL RIO MIDDLE 8TH GRADE CAMPUS  
 Campus Number: 233901043

Texas Education Agency  
**Texas Academic Performance Report**  
**2019-20 Campus STAAR Performance**  
 Bilingual Education/English as a Second Language

Total Students: 770  
 Grade Span: 08 - 08  
 (Current EL Students)

Please note that due to the cancellation of spring 2020 State of Texas Assessments of Academic Readiness (STAAR) due to the COVID-19 pandemic, the Performance section of this year's report is not updated.

	2018	State	District	Campus	Bilingual Education	BE-Trans Early Exit	BE-Trans Late Exit	BE-Dual Two-Way	BE-Dual One-Way	ESL	ESL Content	ESL Pull-Out	LEP No Services	LEP with Services	Total EL
	2018	70%	68%	67%	-	-	-	-	-	57%	-	57%	92%	57%	59%
<b>Progress of Prior Year STAAR Non-Proficient Students (Percent of Non-Proficient Passing STAAR)</b>															
Reading	2019	41%	39%	40%	-	-	-	-	-	26%	-	26%	25%	26%	26%
	2018	38%	32%	33%	-	-	-	-	-	21%	-	21%	*	21%	21%
Mathematics	2019	45%	45%	47%	-	-	-	-	-	33%	-	33%	38%	33%	34%
	2018	47%	44%	40%	-	-	-	-	-	33%	-	33%	*	33%	33%



District Name: SAN FELIPE-DEL RIO CISD  
 Campus Name: DEL RIO MIDDLE  
 Campus Number: 233901043

Texas Education Agency  
**Texas Academic Performance Report**  
**2019-20 Campus STAAR Participation**

Total Students: 1,536  
 Grade Span: 07 - 08  
 School Type: Middle

Please note that due to the cancellation of spring 2020 State of Texas Assessments of Academic Readiness (STAAR) due to the COVID-19 pandemic, the Participation section of this year's report is not updated.

	State	District	Campus	African American	Hispanic	White	American Indian	Asian	Pacific Islander	Two or More Races	Special Ed	Econ Disadv	EL (Current)
<b>2019 STAAR Participation (All Grades)</b>													
<b>All Tests</b>													
Assessment Participant	99%	99%	<b>99%</b>	100%	99%	100%	-	100%	-	100%	99%	99%	100%
Included in Accountability	94%	95%	<b>95%</b>	71%	95%	90%	-	73%	-	43%	94%	95%	86%
Not Included in Accountability													
Mobile	4%	3%	<b>3%</b>	29%	2%	10%	-	27%	-	57%	4%	3%	4%
Other Exclusions	1%	1%	<b>1%</b>	0%	1%	0%	-	0%	-	0%	2%	1%	9%
Not Tested	1%	1%	<b>1%</b>	0%	1%	0%	-	0%	-	0%	1%	1%	0%
Absent	1%	1%	<b>1%</b>	0%	1%	0%	-	0%	-	0%	0%	1%	0%
Other	0%	0%	<b>0%</b>	0%	0%	0%	-	0%	-	0%	0%	0%	0%
<b>2018 STAAR Participation (All Grades)</b>													
<b>All Tests</b>													
Assessment Participant	99%	99%	<b>100%</b>	100%	100%	99%	*	100%	-	100%	100%	100%	100%
Included in Accountability	94%	95%	<b>95%</b>	100%	95%	92%	*	100%	-	100%	96%	96%	85%
Not Included in Accountability													
Mobile	4%	3%	<b>3%</b>	0%	3%	3%	*	0%	-	0%	2%	2%	5%
Other Exclusions	1%	1%	<b>1%</b>	0%	1%	3%	*	0%	-	0%	2%	1%	9%
Not Tested	1%	1%	<b>0%</b>	0%	0%	1%	*	0%	-	0%	0%	0%	0%
Absent	1%	1%	<b>0%</b>	0%	0%	1%	*	0%	-	0%	0%	0%	0%
Other	0%	0%	<b>0%</b>	0%	0%	0%	*	0%	-	0%	0%	0%	0%

District Name: SAN FELIPE-DEL RIO CISD  
 Campus Name: DEL RIO MIDDLE 8TH GRADE CAMPUS  
 Campus Number: 233901043

Texas Education Agency  
**Texas Academic Performance Report**  
**2019-20 Campus Attendance, Graduation, and Dropout Rates**

Total Students: 770  
 Grade Span: 08 - 08  
 School Type: Middle

	State	District	Campus	African American	Hispanic	White	American Indian	Asian	Pacific Islander	Two or More Races	Special Ed	Econ Disadv	EL (Current)
<b>Attendance Rate</b>													
2018-19	95.4%	94.6%	93.4%	92.0%	93.3%	95.2%	*	*	-	*	90.7%	92.6%	91.4%
2017-18	95.4%	94.7%	94.0%	94.1%	93.9%	95.0%	*	*	-	*	91.0%	93.4%	92.6%
<b>Annual Dropout Rate (Gr 7-8)</b>													
2018-19	0.4%	0.2%	0.2%	0.0%	0.2%	0.0%	*	*	-	*	0.5%	0.1%	0.0%
2017-18	0.4%	0.2%	0.1%	0.0%	0.1%	0.0%	*	*	-	*	0.0%	0.2%	0.4%
<b>Annual Dropout Rate (Gr 9-12)</b>													
2018-19	1.9%	2.2%	-	-	-	-	-	-	-	-	-	-	-
2017-18	1.9%	3.3%	-	-	-	-	-	-	-	-	-	-	-
<b>4-Year Longitudinal Rate (Gr 9-12)</b>													
Class of 2019													
Graduated	90.0%	87.0%	-	-	-	-	-	-	-	-	-	-	-
Received TxCHSE	0.5%	0.6%	-	-	-	-	-	-	-	-	-	-	-
Continued HS	3.7%	6.6%	-	-	-	-	-	-	-	-	-	-	-
Dropped Out	5.9%	5.8%	-	-	-	-	-	-	-	-	-	-	-
Graduates and TxCHSE	90.4%	87.6%	-	-	-	-	-	-	-	-	-	-	-
Graduates, TxCHSE, and Continuers	94.1%	94.2%	-	-	-	-	-	-	-	-	-	-	-
Class of 2018													
Graduated	90.0%	82.7%	-	-	-	-	-	-	-	-	-	-	-
Received TxCHSE	0.4%	0.5%	-	-	-	-	-	-	-	-	-	-	-
Continued HS	3.8%	5.6%	-	-	-	-	-	-	-	-	-	-	-
Dropped Out	5.7%	11.2%	-	-	-	-	-	-	-	-	-	-	-
Graduates and TxCHSE	90.4%	83.2%	-	-	-	-	-	-	-	-	-	-	-
Graduates, TxCHSE, and Continuers	94.3%	88.8%	-	-	-	-	-	-	-	-	-	-	-
<b>5-Year Extended Longitudinal Rate (Gr 9-12)</b>													
Class of 2018													
Graduated	92.2%	86.2%	-	-	-	-	-	-	-	-	-	-	-
Received TxCHSE	0.6%	1.1%	-	-	-	-	-	-	-	-	-	-	-
Continued HS	1.1%	1.3%	-	-	-	-	-	-	-	-	-	-	-
Dropped Out	6.1%	11.4%	-	-	-	-	-	-	-	-	-	-	-
Graduates and TxCHSE	92.8%	87.2%	-	-	-	-	-	-	-	-	-	-	-
Graduates, TxCHSE, and Continuers	93.9%	88.6%	-	-	-	-	-	-	-	-	-	-	-
Class of 2017													
Graduated	92.0%	88.3%	-	-	-	-	-	-	-	-	-	-	-
Received TxCHSE	0.6%	1.0%	-	-	-	-	-	-	-	-	-	-	-
Continued HS	1.1%	1.8%	-	-	-	-	-	-	-	-	-	-	-
Dropped Out	6.3%	8.9%	-	-	-	-	-	-	-	-	-	-	-
Graduates and TxCHSE	92.6%	89.3%	-	-	-	-	-	-	-	-	-	-	-
Graduates, TxCHSE, and Continuers	93.7%	91.1%	-	-	-	-	-	-	-	-	-	-	-
<b>6-Year Extended Longitudinal Rate (Gr 9-12)</b>													
Class of 2017													
Graduated	92.4%	89.8%	-	-	-	-	-	-	-	-	-	-	-

District Name: SAN FELIPE-DEL RIO CISD  
 Campus Name: DEL RIO MIDDLE 8TH GRADE CAMPUS  
 Campus Number: 233901043

Texas Education Agency  
**Texas Academic Performance Report**  
**2019-20 Campus Attendance, Graduation, and Dropout Rates**

Total Students: 770  
 Grade Span: 08 - 08  
 School Type: Middle

	State	District	Campus	African American	Hispanic	White	American Indian	Asian	Pacific Islander	Two or More Races	Special Ed	Econ Disadv	EL (Current)
Received TxCHSE	0.7%	1.3%	-	-	-	-	-	-	-	-	-	-	-
Continued HS	0.6%	0.1%	-	-	-	-	-	-	-	-	-	-	-
Dropped Out	6.3%	8.8%	-	-	-	-	-	-	-	-	-	-	-
Graduates and TxCHSE	93.2%	91.1%	-	-	-	-	-	-	-	-	-	-	-
Graduates, TxCHSE, and Continuers	93.7%	91.2%	-	-	-	-	-	-	-	-	-	-	-
<b>Class of 2016</b>													
Graduated	92.1%	90.4%	-	-	-	-	-	-	-	-	-	-	-
Received TxCHSE	0.8%	0.4%	-	-	-	-	-	-	-	-	-	-	-
Continued HS	0.5%	0.1%	-	-	-	-	-	-	-	-	-	-	-
Dropped Out	6.6%	9.0%	-	-	-	-	-	-	-	-	-	-	-
Graduates and TxCHSE	92.9%	90.9%	-	-	-	-	-	-	-	-	-	-	-
Graduates, TxCHSE, and Continuers	93.4%	91.0%	-	-	-	-	-	-	-	-	-	-	-
<b>4-Year Federal Graduation Rate Without Exclusions (Gr 9-12)</b>													
Class of 2019	90.0%	86.0%	-	-	-	-	-	-	-	-	-	-	-
Class of 2018	90.0%	81.6%	-	-	-	-	-	-	-	-	-	-	-
<b>RHSP/DAP Graduates (Longitudinal Rate)</b>													
Class of 2019	73.3%	-	-	-	-	-	-	-	-	-	-	-	-
Class of 2018	68.5%	-	-	-	-	-	-	-	-	-	-	-	-
<b>FHSP-E Graduates (Longitudinal Rate)</b>													
Class of 2019	4.2%	0.2%	-	-	-	-	-	-	-	-	-	-	-
Class of 2018	5.0%	0.0%	-	-	-	-	-	-	-	-	-	-	-
<b>FHSP-DLA Graduates (Longitudinal Rate)</b>													
Class of 2019	83.5%	97.1%	-	-	-	-	-	-	-	-	-	-	-
Class of 2018	82.0%	95.3%	-	-	-	-	-	-	-	-	-	-	-
<b>RHSP/DAP/FHSP-E/FHSP-DLA Graduates (Longitudinal Rate)</b>													
Class of 2019	87.6%	97.3%	-	-	-	-	-	-	-	-	-	-	-
Class of 2018	86.8%	95.3%	-	-	-	-	-	-	-	-	-	-	-
<b>RHSP/DAP Graduates (Annual Rate)</b>													
2018-19	32.7%	*	-	-	-	-	-	-	-	-	-	-	-
2017-18	37.7%	93.3%	-	-	-	-	-	-	-	-	-	-	-
<b>FHSP-E Graduates (Annual Rate)</b>													
2018-19	4.4%	0.2%	-	-	-	-	-	-	-	-	-	-	-
2017-18	4.9%	0.0%	-	-	-	-	-	-	-	-	-	-	-
<b>FHSP-DLA Graduates (Annual Rate)</b>													
2018-19	82.1%	95.0%	-	-	-	-	-	-	-	-	-	-	-
2017-18	81.5%	95.8%	-	-	-	-	-	-	-	-	-	-	-
<b>RHSP/DAP/FHSP-E/FHSP-DLA Graduates (Annual Rate)</b>													
2018-19	85.9%	95.2%	-	-	-	-	-	-	-	-	-	-	-
2017-18	85.1%	95.7%	-	-	-	-	-	-	-	-	-	-	-

District Name: SAN FELIPE-DEL RIO CISD  
 Campus Name: DEL RIO MIDDLE 8TH GRADE CAMPUS  
 Campus Number: 233901043

Texas Education Agency  
**Texas Academic Performance Report**  
**2019-20 Campus Graduation Profile**

Total Students: 770  
 Grade Span: 08 - 08  
 School Type: Middle

	Campus Count	Campus Percent	District Count	State Count
<b>Graduates (2018-19 Annual Graduates)</b>				
Total Graduates	-	-	664	355,615
By Ethnicity:				
African American	-	-	3	43,953
Hispanic	-	-	612	180,673
White	-	-	44	105,577
American Indian	-	-	0	1,293
Asian	-	-	3	16,564
Pacific Islander	-	-	1	537
Two or More Races	-	-	1	7,018
By Graduation Type:				
Minimum H.S. Program	-	-	0	2,248
Recommended H.S. Program/Distinguished Achievement Program	-	-	4	1,090
Foundation H.S. Program (No Endorsement)	-	-	51	51,579
Foundation H.S. Program (Endorsement)	-	-	1	15,160
Foundation H.S. Program (DLA)	-	-	608	285,538
Special Education Graduates	-	-	62	27,598
Economically Disadvantaged Graduates	-	-	439	186,364
LEP Graduates	-	-	57	25,189
At-Risk Graduates	-	-	383	146,432

District Name: SAN FELIPE-DEL RIO CISD  
 Campus Name: DEL RIO MIDDLE 8TH GRADE CAMPUS  
 Campus Number: 233901043

Texas Education Agency  
**Texas Academic Performance Report**  
**2019-20 Campus College, Career, and Military Readiness (CCMR)**

Total Students: 770  
 Grade Span: 08 - 08  
 School Type: Middle

	State	District	Campus	African American	Hispanic	White	American Indian	Asian	Pacific Islander	Two or More Races	Special Ed	Econ Disadv	EL (Current)
<b>College, Career, and Military Ready Graduates (Student Achievement)</b>													
College, Career, or Military Ready (Annual Graduates)													
2018-19	72.9%	74.2%	-	-	-	-	-	-	-	-	-	-	-
2017-18	65.5%	69.7%	-	-	-	-	-	-	-	-	-	-	-
<b>College Ready Graduates</b>													
College Ready (Annual Graduates)													
2018-19	53.0%	50.0%	-	-	-	-	-	-	-	-	-	-	-
2017-18	50.0%	47.2%	-	-	-	-	-	-	-	-	-	-	-
TSI Criteria Graduates (Annual Graduates)													
English Language Arts													
2018-19	60.7%	41.1%	-	-	-	-	-	-	-	-	-	-	-
2017-18	58.2%	42.2%	-	-	-	-	-	-	-	-	-	-	-
Mathematics													
2018-19	48.6%	32.4%	-	-	-	-	-	-	-	-	-	-	-
2017-18	46.0%	33.5%	-	-	-	-	-	-	-	-	-	-	-
Both Subjects													
2018-19	44.2%	30.4%	-	-	-	-	-	-	-	-	-	-	-
2017-18	42.1%	30.0%	-	-	-	-	-	-	-	-	-	-	-
Dual Course Credits (Annual Graduates)													
Any Subject													
2018-19	23.1%	45.2%	-	-	-	-	-	-	-	-	-	-	-
2017-18	20.7%	37.3%	-	-	-	-	-	-	-	-	-	-	-
AP/IB Met Criteria in Any Subject (Annual Graduates)													
Any Subject													
2018-19	21.1%	6.6%	-	-	-	-	-	-	-	-	-	-	-
2017-18	20.4%	7.2%	-	-	-	-	-	-	-	-	-	-	-
Associate's Degree													
Associate's Degree (Annual Graduates)													
2018-19	1.9%	9.3%	-	-	-	-	-	-	-	-	-	-	-
2017-18	1.4%	0.0%	-	-	-	-	-	-	-	-	-	-	-
OnRamps Course Credits (Annual Graduates)													
2018-19	2.3%	7.4%	-	-	-	-	-	-	-	-	-	-	-
2017-18	1.0%	8.0%	-	-	-	-	-	-	-	-	-	-	-
<b>Career/Military Ready Graduates</b>													
Career or Military Ready (Annual Graduates)													
2018-19	40.4%	57.0%	-	-	-	-	-	-	-	-	-	-	-
2017-18	28.7%	52.2%	-	-	-	-	-	-	-	-	-	-	-
Approved Industry-Based Certification (Annual Graduates)													
2018-19	10.7%	22.6%	-	-	-	-	-	-	-	-	-	-	-
2017-18	4.8%	14.7%	-	-	-	-	-	-	-	-	-	-	-
Graduate with Completed IEP and Workforce Readiness (Annual Graduates)													

District Name: SAN FELIPE-DEL RIO CISD  
 Campus Name: DEL RIO MIDDLE 8TH GRADE CAMPUS  
 Campus Number: 233901043

Total Students: 770  
 Grade Span: 08 - 08  
 School Type: Middle

	State	District	Campus	African American	Hispanic	White	American Indian	Asian	Pacific Islander	Two or More Races	Special Ed	Econ Disadv	EL (Current)
2018-19	2.3%	3.2%	-	-	-	-	-	-	-	-	-	-	-
2017-18	1.7%	1.8%	-	-	-	-	-	-	-	-	-	-	-
CTE Coherent Sequence Coursework Aligned with Industry-Based Certifications (Annual Graduates)													
2018-19	55.6%	71.4%	-	-	-	-	-	-	-	-	-	-	-
2017-18	38.7%	77.8%	-	-	-	-	-	-	-	-	-	-	-
U.S. Armed Forces Enlistment (Annual Graduates)													
2018-19	5.0%	9.8%	-	-	-	-	-	-	-	-	-	-	-
2017-18	4.3%	3.8%	-	-	-	-	-	-	-	-	-	-	-
Graduates under an Advanced Degree Plan and Identified as a current Special Education Student (Annual Graduates)													
2018-19	2.7%	2.0%	-	-	-	-	-	-	-	-	-	-	-
2017-18	2.6%	2.8%	-	-	-	-	-	-	-	-	-	-	-
Graduates with Level I or Level II Certificate (Annual Graduates)													
2018-19	0.6%	6.9%	-	-	-	-	-	-	-	-	-	-	-
2017-18	0.6%	7.0%	-	-	-	-	-	-	-	-	-	-	-

District Name: SAN FELIPE-DEL RIO CISD  
 Campus Name: DEL RIO MIDDLE 8TH GRADE CAMPUS  
 Campus Number: 233901043

Texas Education Agency  
**Texas Academic Performance Report**  
**2019-20 Campus CCMR-Related Indicators**

Total Students: 770  
 Grade Span: 08 - 08  
 School Type: Middle

	State	District	Campus	African American	Hispanic	White	American Indian	Asian	Pacific Islander	Two or More Races	Special Ed	Econ Disadv	EL (Current)
<b>TSIA Results (Graduates &gt;= Criterion) (Annual Graduates)</b>													
Reading													
2018-19	33.4%	25.6%	-	-	-	-	-	-	-	-	-	-	-
2017-18	32.1%	21.4%	-	-	-	-	-	-	-	-	-	-	-
Mathematics													
2018-19	24.7%	27.6%	-	-	-	-	-	-	-	-	-	-	-
2017-18	23.7%	25.1%	-	-	-	-	-	-	-	-	-	-	-
Both Subjects													
2018-19	18.8%	18.8%	-	-	-	-	-	-	-	-	-	-	-
2017-18	18.1%	13.1%	-	-	-	-	-	-	-	-	-	-	-
<b>CTE Coherent Sequence (Annual Graduates)</b>													
2018-19	59.0%	71.5%	-	-	-	-	-	-	-	-	-	-	-
2017-18	58.4%	78.7%	-	-	-	-	-	-	-	-	-	-	-
<b>Completed and Received Credit for College Prep Courses (Annual Graduates)</b>													
English Language Arts													
2018-19	5.1%	0.0%	-	-	-	-	-	-	-	-	-	-	-
2017-18	2.0%	0.0%	-	-	-	-	-	-	-	-	-	-	-
Mathematics													
2018-19	7.3%	0.0%	-	-	-	-	-	-	-	-	-	-	-
2017-18	3.9%	0.0%	-	-	-	-	-	-	-	-	-	-	-
Both Subjects													
2018-19	2.6%	0.0%	-	-	-	-	-	-	-	-	-	-	-
2017-18	0.9%	0.0%	-	-	-	-	-	-	-	-	-	-	-
<b>AP/IB Results (Participation) (Grades 11-12)</b>													
All Subjects													
2019	25.2%	23.5%	-	-	-	-	-	-	-	-	n/a	-	n/a
2018	25.8%	24.1%	-	-	-	-	-	-	-	-	n/a	-	n/a
English Language Arts													
2019	14.5%	2.6%	-	-	-	-	-	-	-	-	n/a	-	n/a
2018	15.3%	2.1%	-	-	-	-	-	-	-	-	n/a	-	n/a
Mathematics													
2019	7.4%	2.6%	-	-	-	-	-	-	-	-	n/a	-	n/a
2018	7.3%	2.7%	-	-	-	-	-	-	-	-	n/a	-	n/a
Science													
2019	10.4%	18.1%	-	-	-	-	-	-	-	-	n/a	-	n/a
2018	10.8%	19.4%	-	-	-	-	-	-	-	-	n/a	-	n/a
Social Studies													
2019	13.9%	11.2%	-	-	-	-	-	-	-	-	n/a	-	n/a
2018	14.5%	10.1%	-	-	-	-	-	-	-	-	n/a	-	n/a
<b>AP/IB Results (Examinees &gt;= Criterion) (Grades 11-12)</b>													
All Subjects													
2019	51.0%	12.6%	-	-	-	-	-	-	-	-	n/a	-	n/a
2018	50.7%	10.7%	-	-	-	-	-	-	-	-	n/a	-	n/a
English Language Arts													
2019	41.2%	13.2%	-	-	-	-	-	-	-	-	n/a	-	n/a
2018	42.5%	19.4%	-	-	-	-	-	-	-	-	n/a	-	n/a
Mathematics													
2019	52.2%	17.9%	-	-	-	-	-	-	-	-	n/a	-	n/a

District Name: SAIV FELIPE-DEL RIO CISD  
 Campus Name: DEL RIO MIDDLE 8TH GRADE CAMPUS  
 Campus Number: 233901043

Texas Education Agency  
**Texas Academic Performance Report**  
**2019-20 Campus CCMR-Related Indicators**

Total Students: 770  
 Grade Span: 08 - 08  
 School Type: Middle

	State	District	Campus	African American	Hispanic	White	American Indian	Asian	Pacific Islander	Two or More Races	Special Ed	Econ Disadv	EL (Current)
2018 Science	52.8%	22.0%	-	-	-	-	-	-	-	-	n/a	-	n/a
2019 Science	40.6%	6.7%	-	-	-	-	-	-	-	-	n/a	-	n/a
2018 Social Studies	38.0%	3.7%	-	-	-	-	-	-	-	-	n/a	-	n/a
2019 Social Studies	46.3%	1.2%	-	-	-	-	-	-	-	-	n/a	-	n/a
2018 Social Studies	44.6%	3.3%	-	-	-	-	-	-	-	-	n/a	-	n/a
<b>SAT/ACT Results (Annual Graduates)</b>													
Tested													
2018-19	75.0%	43.2%	-	-	-	-	-	-	-	-	n/a	-	n/a
2017-18	74.6%	43.6%	-	-	-	-	-	-	-	-	n/a	-	n/a
At/Above Criterion for All Examinees													
2018-19	36.1%	32.1%	-	-	-	-	-	-	-	-	n/a	-	n/a
2017-18	37.9%	31.6%	-	-	-	-	-	-	-	-	n/a	-	n/a
<b>Average SAT Score (Annual Graduates)</b>													
All Subjects													
2018-19	1027	1012	-	-	-	-	-	-	-	-	n/a	-	n/a
2017-18	1036	1010	-	-	-	-	-	-	-	-	n/a	-	n/a
English Language Arts and Writing													
2018-19	517	512	-	-	-	-	-	-	-	-	n/a	-	n/a
2017-18	521	506	-	-	-	-	-	-	-	-	n/a	-	n/a
Mathematics													
2018-19	510	501	-	-	-	-	-	-	-	-	n/a	-	n/a
2017-18	515	503	-	-	-	-	-	-	-	-	n/a	-	n/a
<b>Average ACT Score (Annual Graduates)</b>													
All Subjects													
2018-19	20.6	21.1	-	-	-	-	-	-	-	-	n/a	-	n/a
2017-18	20.6	20.2	-	-	-	-	-	-	-	-	n/a	-	n/a
English Language Arts													
2018-19	20.3	21.0	-	-	-	-	-	-	-	-	n/a	-	n/a
2017-18	20.3	19.7	-	-	-	-	-	-	-	-	n/a	-	n/a
Mathematics													
2018-19	20.4	20.7	-	-	-	-	-	-	-	-	n/a	-	n/a
2017-18	20.6	20.4	-	-	-	-	-	-	-	-	n/a	-	n/a
Science													
2018-19	20.8	21.2	-	-	-	-	-	-	-	-	n/a	-	n/a
2017-18	20.9	20.5	-	-	-	-	-	-	-	-	n/a	-	n/a



District Name: SAN FELIPE-DEL RIO CISD  
 Campus Name: DEL RIO MIDDLE 8TH GRADE CAMPUS  
 Campus Number: 233901043

Texas Education Agency  
**Texas Academic Performance Report**  
**2019-20 Campus Other Postsecondary Indicators**

Total Students: 770  
 Grade Span: 08 - 08  
 School Type: Middle

	State	District	Campus	African American	Hispanic	White	American Indian	Asian	Pacific Islander	Two or More Races	Special Ed	Econ Disadv	EL (Current)
<b>Advanced Dual-Credit Course Completion (Grades 9-12)</b>													
Any Subject													
2018-19	44.6%	59.6%	-	-	-	-	-	-	-	-	-	-	-
2017-18	43.4%	53.8%	-	-	-	-	-	-	-	-	-	-	-
English Language Arts													
2018-19	17.8%	40.8%	-	-	-	-	-	-	-	-	-	-	-
2017-18	17.3%	36.9%	-	-	-	-	-	-	-	-	-	-	-
Mathematics													
2018-19	20.4%	12.3%	-	-	-	-	-	-	-	-	-	-	-
2017-18	20.7%	12.4%	-	-	-	-	-	-	-	-	-	-	-
Science													
2018-19	21.7%	17.1%	-	-	-	-	-	-	-	-	-	-	-
2017-18	21.2%	14.0%	-	-	-	-	-	-	-	-	-	-	-
Social Studies													
2018-19	23.6%	30.5%	-	-	-	-	-	-	-	-	-	-	-
2017-18	22.8%	27.7%	-	-	-	-	-	-	-	-	-	-	-
<b>Graduates Enrolled in Texas Institution of Higher Education (TX IHE)</b>													
2017-18	53.4%	49.4%	-	-	-	-	-	-	-	-	-	-	-
2016-17	54.6%	55.0%	-	-	-	-	-	-	-	-	-	-	-
<b>Graduates in TX IHE Completing One Year Without Enrollment in a Developmental Education Course</b>													
2017-18	60.7%	36.6%	-	-	-	-	-	-	-	-	-	-	-
2016-17	59.2%	43.1%	-	-	-	-	-	-	-	-	-	-	-

District Name: SAN FELIPE-DEL RIO CISD  
 Campus Name: DEL RIO MIDDLE 8TH GRADE CAMPUS  
 Campus Number: 233901043

Texas Education Agency  
**Texas Academic Performance Report**  
**2019-20 Campus Student Information**

Total Students: 770  
 Grade Span: 08 - 08  
 School Type: Middle

Student Information	Membership				Enrollment			
	Count	Percent	District	State	Count	Percent	District	State
Total Students	770	100.0%	10,311	5,479,173	770	100.0%	10,331	5,493,940
Students by Grade:								
Early Childhood Education	0	0.0%	0.4%	0.3%	0	0.0%	0.5%	0.5%
Pre-Kindergarten	0	0.0%	4.9%	4.5%	0	0.0%	4.9%	4.5%
Kindergarten	0	0.0%	6.5%	7.0%	0	0.0%	6.5%	7.0%
Grade 1	0	0.0%	7.5%	7.1%	0	0.0%	7.5%	7.1%
Grade 2	0	0.0%	6.9%	7.1%	0	0.0%	6.9%	7.1%
Grade 3	0	0.0%	7.0%	7.1%	0	0.0%	7.0%	7.1%
Grade 4	0	0.0%	7.3%	7.3%	0	0.0%	7.3%	7.3%
Grade 5	0	0.0%	7.6%	7.6%	0	0.0%	7.6%	7.6%
Grade 6	0	0.0%	7.6%	7.7%	0	0.0%	7.6%	7.7%
Grade 7	0	0.0%	6.7%	7.7%	0	0.0%	6.6%	7.7%
Grade 8	770	100.0%	8.1%	7.5%	770	100.0%	8.1%	7.5%
Grade 9	0	0.0%	7.3%	8.2%	0	0.0%	7.3%	8.2%
Grade 10	0	0.0%	7.5%	7.4%	0	0.0%	7.5%	7.4%
Grade 11	0	0.0%	7.4%	6.9%	0	0.0%	7.4%	6.9%
Grade 12	0	0.0%	7.3%	6.4%	0	0.0%	7.3%	6.4%
Ethnic Distribution:								
African American	4	0.5%	0.7%	12.6%	4	0.5%	0.7%	12.6%
Hispanic	724	94.0%	93.0%	52.8%	724	94.0%	93.0%	52.8%
White	40	5.2%	5.5%	27.0%	40	5.2%	5.5%	27.0%
American Indian	1	0.1%	0.1%	0.4%	1	0.1%	0.1%	0.4%
Asian	1	0.1%	0.4%	4.6%	1	0.1%	0.4%	4.6%
Pacific Islander	0	0.0%	0.0%	0.2%	0	0.0%	0.0%	0.2%
Two or More Races	0	0.0%	0.3%	2.5%	0	0.0%	0.3%	2.5%
Sex:								
Female	383	49.7%	49.5%	48.8%	383	49.7%	49.5%	48.8%
Male	387	50.3%	50.5%	51.2%	387	50.3%	50.5%	51.2%
Economically Disadvantaged	548	71.2%	72.7%	60.3%	548	71.2%	72.6%	60.2%
Non-Educationally Disadvantaged	222	28.8%	27.3%	39.7%	222	28.8%	27.4%	39.8%
Section 504 Students	100	13.0%	9.3%	6.9%	100	13.0%	9.3%	6.9%
English Learners (EL)	103	13.4%	17.1%	20.3%	103	13.4%	17.1%	20.3%
Students w/ Disciplinary Placements (2018-19)	85	5.3%	1.8%	1.5%				
Students w/ Dyslexia	34	4.4%	3.7%	4.1%	34	4.4%	3.7%	4.1%
Foster Care	1	0.1%	0.1%	0.3%	1	0.1%	0.1%	0.3%
Homeless	10	1.3%	1.1%	1.4%	10	1.3%	1.1%	1.4%
Immigrant	5	0.6%	1.6%	2.3%	5	0.6%	1.6%	2.3%
Migrant	12	1.6%	1.9%	0.3%	12	1.6%	1.9%	0.3%
Title I	770	100.0%	99.8%	65.1%	770	100.0%	99.8%	65.1%
Military Connected	7	0.9%	2.8%	1.9%	7	0.9%	2.8%	1.9%
At-Risk	513	66.6%	68.4%	50.6%	513	66.6%	68.3%	50.5%

District Name: SAN FELIPE-DEL RIO CISD  
 Campus Name: DEL RIO MIDDLE 8TH GRADE CAMPUS  
 Campus Number: 233901043

Texas Education Agency  
**Texas Academic Performance Report**  
**2019-20 Campus Student Information**

Total Students: 770  
 Grade Span: 08 - 08  
 School Type: Middle

Student Information	Membership				Enrollment			
	Campus		District	State	Campus		District	State
	Count	Percent			Count	Percent		
<b>Students by Instructional Program:</b>								
Bilingual/ESL Education	100	13.0%	16.8%	20.6%	100	13.0%	16.7%	20.6%
Career & Technical Education	410	53.2%	32.5%	27.6%				
Career & Technical Education (9-12 grades only)	0	0.0%	84.2%	50.8%	0	-	84.2%	50.8%
Gifted & Talented Education	111	14.4%	8.7%	8.1%	111	14.4%	8.7%	8.1%
Special Education	92	11.9%	12.1%	10.5%	92	11.9%	12.2%	10.7%
<b>Students with Disabilities by Type of Primary Disability:</b>								
Total Students with Disabilities	92							
By Type of Primary Disability								
Students with Intellectual Disabilities	55	59.8%	45.3%	42.4%				
Students with Physical Disabilities	*	*	25.1%	21.4%				
Students with Autism	**	**	6.6%	13.8%				
Students with Behavioral Disabilities	23	25.0%	22.6%	20.8%				
Students with Non-Categorical Early Childhood	0	0.0%	0.5%	1.5%				
<b>Mobility (2018-19):</b>								
Total Mobile Students	119	7.4%	11.3%	15.3%				
By Ethnicity:								
African American	5	0.3%						
Hispanic	94	5.8%						
White	17	1.1%						
American Indian	1	0.1%						
Asian	1	0.1%						
Pacific Islander	0	0.0%						
Two or More Races	1	0.1%						
<b>Student Attrition (2018-19):</b>								
Total Student Attrition	68	8.7%						

Student Information	Non-Special Education Rates			Special Education Rates		
	Campus	District	State	Campus	District	State
<b>Retention Rates by Grade:</b>						
Kindergarten	-	0.2%	1.6%	-	2.6%	5.5%
Grade 1	-	5.4%	2.9%	-	13.3%	4.9%
Grade 2	-	2.9%	1.6%	-	6.6%	2.0%
Grade 3	-	2.7%	0.9%	-	0.9%	0.8%
Grade 4	-	2.0%	0.5%	-	1.8%	0.4%
Grade 5	-	4.2%	0.4%	-	0.0%	0.5%
Grade 6	-	0.2%	0.4%	-	1.1%	0.5%
Grade 7	1.3%	1.3%	0.5%	1.0%	1.0%	0.6%
Grade 8	10.5%	9.7%	0.4%	0.0%	0.0%	0.6%
Grade 9	-	4.0%	7.8%	-	10.4%	13.1%

District Name: SAN FELIPE-DEL RIO CISD  
 Campus Name: DEL RIO MIDDLE 8TH GRADE CAMPUS  
 Campus Number: 233901043

Texas Education Agency  
**Texas Academic Performance Report**  
**2019-20 Campus Student Information**

Total Students: 770  
 Grade Span: 08 - 08  
 School Type: Middle

<u>Class Size Information</u>	<u>Campus</u>	<u>District</u>	<u>State</u>
Class Size Averages by Grade and Subject (Derived from teacher responsibility records):			
Elementary:			
Kindergarten	-	19.9	19.0
Grade 1	-	20.6	18.9
Grade 2	-	19.2	18.8
Grade 3	-	19.0	19.0
Grade 4	-	20.1	19.2
Grade 5	-	21.0	20.9
Grade 6	-	22.6	20.4
Secondary:			
English/Language Arts	21.6	20.0	16.4
Foreign Languages	24.4	21.7	18.7
Mathematics	21.6	20.3	17.8
Science	25.9	23.4	18.8
Social Studies	25.9	22.9	19.3

District Name: SAN FELIPE-DEL RIO CISD  
 Campus Name: DEL RIO MIDDLE 8TH GRADE CAMPUS  
 Campus Number: 233901043

Texas Education Agency  
**Texas Academic Performance Report**  
**2019-20 Campus Staff Information**

Total Students: 770  
 Grade Span: 08 - 08  
 School Type: Middle

Staff Information	----- Campus -----		District	State
	Count/Average	Percent		
Total Staff	57.2	100.0%	100.0%	100.0%
Professional Staff:	50.9	89.1%	53.3%	63.7%
Teachers	43.2	75.6%	42.4%	49.4%
Professional Support	5.7	10.0%	7.6%	10.2%
Campus Administration (School Leadership)	2.0	3.5%	2.3%	3.0%
Educational Aides:	6.2	10.9%	11.8%	10.6%
Librarians & Counselors (Headcount):				
Librarians				
Full-time	1.0	n/a	6.0	4,373.0
Part-time	0.0	n/a	0.0	595.0
Counselors				
Full-time	2.0	n/a	29.0	12,901.0
Part-time	0.0	n/a	0.0	1,103.0
Total Minority Staff:	47.2	82.5%	88.5%	51.1%
Teachers by Ethnicity and Sex:				
African American	0.0	0.0%	1.4%	10.8%
Hispanic	33.9	78.4%	80.4%	28.1%
White	9.3	21.6%	16.5%	57.7%
American Indian	0.0	0.0%	0.6%	0.3%
Asian	0.0	0.0%	0.3%	1.8%
Pacific Islander	0.0	0.0%	0.2%	0.2%
Two or More Races	0.0	0.0%	0.5%	1.1%
Males	15.2	35.2%	22.0%	23.8%
Females	28.0	64.8%	78.0%	76.2%
Teachers by Highest Degree Held:				
No Degree	0.0	0.0%	1.6%	1.3%
Bachelors	33.6	77.7%	76.4%	73.4%
Masters	9.7	22.3%	21.8%	24.5%
Doctorate	0.0	0.0%	0.2%	0.7%
Teachers by Years of Experience:				
Beginning Teachers	4.5	10.4%	6.0%	7.4%
1-5 Years Experience	15.4	35.5%	28.7%	27.9%
6-10 Years Experience	9.7	22.5%	17.7%	19.4%
11-20 Years Experience	10.5	24.2%	25.5%	29.4%
Over 20 Years Experience	3.2	7.3%	22.1%	15.9%
Number of Students per Teacher	17.8	n/a	16.6	15.1

Texas Education Agency  
**Texas Academic Performance Report**  
**2019-20 Campus Staff Information**

District Name: SAIV FELIPE-DEL RIO CISD  
 Campus Name: DEL RIO MIDDLE 8TH GRADE CAMPUS  
 Campus Number: 233901043

Total Students: 770  
 Grade Span: 08 - 08  
 School Type: Middle

<b>Staff Information</b>	<b>Campus</b>	<b>District</b>	<b>State</b>
<b>Experience of Campus Leadership:</b>			
Average Years Experience of Principals	10.0	5.3	6.2
Average Years Experience of Principals with District	10.0	5.3	5.3
Average Years Experience of Assistant Principals	3.0	3.7	5.3
Average Years Experience of Assistant Principals with District	3.0	3.5	4.7
<b>Average Years Experience of Teachers:</b>			
Average Years Experience of Teachers:	10.1	12.9	11.1
Average Years Experience of Teachers with District:	8.8	11.2	7.2
<b>Average Teacher Salary by Years of Experience (regular duties only):</b>			
Beginning Teachers	\$41,613	\$44,299	\$49,868
1-5 Years Experience	\$49,610	\$53,338	\$52,823
6-10 Years Experience	\$53,315	\$51,757	\$55,756
11-20 Years Experience	\$56,645	\$57,950	\$59,308
Over 20 Years Experience	\$65,472	\$63,632	\$65,449
<b>Average Actual Salaries (regular duties only):</b>			
Teachers	\$52,481	\$55,969	\$57,091
Professional Support	\$64,496	\$72,455	\$67,352
Campus Administration (School Leadership)	\$89,629	\$85,531	\$82,512
<b>Instructional Staff Percent:</b>			
Instructional Staff Percent:	n/a	58.3%	64.6%
<b>Contracted Instructional Staff (not incl. above):</b>			
Contracted Instructional Staff (not incl. above):	0.0	0.0	6,309.0

District Name: SAN FELIPE-DEL RIO CISD  
 Campus Name: DEL RIO MIDDLE 8TH GRADE CAMPUS  
 Campus Number: 233901043

Texas Education Agency  
**Texas Academic Performance Report**  
**2019-20 Campus Staff Information**

Total Students: 770  
 Grade Span: 08 - 08  
 School Type: Middle

Program Information	----- Campus -----		District	State
	Count	Percent		
Teachers by Program (population served):				
Bilingual/ESL Education	1.0	2.3%	9.0%	6.5%
Career & Technical Education	2.6	5.9%	6.5%	5.0%
Compensatory Education	0.6	1.4%	6.5%	2.8%
Gifted & Talented Education	0.0	0.0%	0.0%	1.9%
Regular Education	33.8	78.1%	69.2%	70.9%
Special Education	2.4	5.5%	5.5%	9.3%
Other	2.9	6.7%	3.3%	3.6%

- '^' Indicates that rates for reading and mathematics are based on the cumulative results from the first and second administrations of STAAR.
- \*' Indicates results are masked due to small numbers to protect student confidentiality.
- '\*\*' When only one student disability group is masked, then the second smallest student disability group is masked regardless of size.
- '-' Indicates there are no students in the group.
- 'n/a' Indicates data reporting is not applicable for this group.
- '?' Indicates that the data for this item were statistically improbable or were reported outside a reasonable range.

[Link to: PEIMS Financial Standard Reports 2018-19 Financial Actual Report](#)



Texas Education Agency

## To the Administrator Addressed

Commissioner Mike Morath

1701 North Congress Avenue • Austin, Texas 78701-1494 • 512 463-9734 • 512 463-9838 FAX • [tea.texas.gov](http://tea.texas.gov)

DATE:	April 2, 2020
SUBJECT:	Every Student Succeeds Act (ESSA) Waiver Approval & 2020 State Academic Accountability
CATEGORY:	Notice
NEXT STEPS:	Share with appropriate staff

This letter is to notify you that the Texas Education Agency (TEA) received approval from U.S. Department of Education (USDE) on March 30, 2020, to waive statewide assessment and accountability requirements under the Elementary and Secondary Education Act (ESEA), as amended by the Every Student Succeeds Act (ESSA), for the 2019–2020 school year.

Additionally, for 2020 state academic accountability, all districts and campuses will receive a label of *Not Rated: Declared State of Disaster*.

### Background

As announced in the *To the Administrator Addressed* letter dated March 18, 2020, Governor Greg Abbott used his statutory authority under Texas Government Code, §418.016 to suspend annual academic assessment requirements for the remainder of the 2019–2020 school year. As a result, the State of Texas Assessments of Academic Readiness (STAAR®) are not being administered for the 2019–2020 school year in response to the COVID-19 pandemic.

TEA submitted a federal assessment and accountability waiver on March 24, 2020, and will issue labels indicating *Not Rated: Declared State of Disaster* for 2020 to recognize that the closure of schools during the state’s testing window inhibited the ability of the state to accurately measure district and campus performance.

### School Improvement Implications and Funding

While no ratings will be issued in 2020, an overall rating or domain rating of *D* or *F* in 2019 and an overall rating or domain rating of *D* or *F* in 2021 will be considered to be consecutive for the determination of multiple-year unacceptable status.

Furthermore, as with other *Not Rated* labels, when a district or campus receives a *Not Rated: Declared State of Disaster* label, the district or campus shall continue to implement the previously ordered sanctions and interventions. If a campus has been ordered to prepare a turnaround plan and then receives a rating of *Not Rated: Declared State of Disaster*, that campus is strongly encouraged, but not required, to implement the approved turnaround plan.

Campuses identified for comprehensive support and improvement, targeted support and improvement, and additional targeted support in 2019 will maintain that label and interventions for 2020–2021.

### For Further Information

To view the complete amendment request and approval as well as other valuable resources, visit <https://tea.texas.gov/texas-schools/health-safety-discipline/coronavirus-covid-19-support-and-guidance>.



If you have questions regarding this waiver request or 2020 academic accountability ratings, please contact TEA's Performance Reporting Division at (512) 463-9704 or [performance.reporting@tea.texas.gov](mailto:performance.reporting@tea.texas.gov).

For questions regarding interventions, please contact the School Improvement Division at (512) 463-5226 or [SIDivision@tea.texas.gov](mailto:SIDivision@tea.texas.gov).

Sincerely,

Mike Morath  
Commissioner

**Texas Education Agency  
2020 Accountability Ratings Overall Summary  
DEL RIO MIDDLE 8TH GRADE CAMPUS (233901043) - SAN FELIPE-DEL RIO CISD**

**Accountability Rating Summary**

\*All Districts and Schools Were Not Rated in 2020 Due to COVID-19\*

Given the impact of COVID-19, all districts and schools received a label of Not Rated: Declared State of Disaster for their 2020 accountability ratings.

[Click here to read the official announcement.](#)

**Identification of Schools for Improvement**

This campus is identified for targeted support and improvement.

**Distinction Designations**

Distinction designations were not awarded in 2020.



## Texas Education Agency 2020 Accountability Ratings Overall Summary DEL RIO MIDDLE 8TH GRADE CAMPUS (233901043) - SAN FELIPE-DEL RIO CISD

### Accountability Rating Summary

\*All Districts and Schools Were Not Rated in 2020 Due to COVID-19\*

Given the impact of COVID-19, all districts and schools received a label of Not Rated: Declared State of Disaster for their 2020 accountability ratings.  
[Click here to read the official announcement.](#)

### Identification of Schools for Improvement

This campus is identified for targeted support and improvement.

### Distinction Designations

Distinction designations were not awarded in 2020.



**Texas Education Agency**  
**2019-20 School Report Card**  
**DEL RIO MIDDLE 8TH GRADE CAMPUS (233901043)**

**Accountability Rating**

**School Information**

\*All Districts and Schools Were Not Rated in 2020 Due to COVID-19\*

District Name: SAN FELIPE-DEL RIO CISD  
 Campus Type: Middle School  
 Total Students: 770  
 Grade Span: 08 - 08

**Not Rated**

Given the impact of COVID-19, all districts and schools received a label of Not Rated: Declared State of Disaster for their 2020 accountability ratings.

For more information about this campus, see <https://TXSchools.gov> or the Texas Academic Performance Report at <https://ptsvr1.tea.texas.gov/perreport/tapri/2020/index.html>

[Click here to read the official announcement.](#)

**Distinction Designations**

Distinction designations were not awarded in 2020.

**School and Student Information**

This section provides demographic information about DEL RIO MIDDLE 8TH GRADE CAMPUS, including attendance rates; enrollment percentages for various student groups; student mobility rates; and class size averages at the campus, district, and state level, where applicable.

	Campus	District	State
<b>Attendance Rate (2018-19)</b>	93.4%	94.6%	95.4%
<b>Enrollment by Race/Ethnicity</b>			
African American	0.5%	0.7%	12.6%
Hispanic	94.0%	93.0%	52.8%
White	5.2%	5.5%	27.0%
American Indian	0.1%	0.1%	0.4%
Asian	0.1%	0.4%	4.6%
Pacific Islander	0.0%	0.0%	0.2%
Two or More Races	0.0%	0.3%	2.5%
<b>Enrollment by Student Group</b>			
Economically Disadvantaged	71.2%	72.6%	60.2%
Special Education	11.9%	12.2%	10.7%
English Learners	13.4%	17.1%	20.3%
<b>Mobility Rate (2018-19)</b>	7.4%	11.3%	15.3%

**School Financial Information (2018-19)**

Various financial indicators based on actual data from the prior year are reported for the campus, district, and state. For more information, see <http://tea.texas.gov/financialstandardsreports/>.

	Campus	District	State
<b>Instructional Staff Percent</b>	n/a	58.3%	64.6%
<b>Instructional Expenditure Ratio</b>	n/a	53.7%	62.8%
<b>Expenditures per Student</b>			
Total Operating Expenditures	\$6,859	\$9,763	\$9,913
Instruction	\$4,107	\$5,147	\$5,558
Instructional Leadership	\$85	\$188	\$162
School Leadership	\$446	\$465	\$589

**Texas Education Agency  
2019-20 School Report Card  
DEL RIO MIDDLE 8TH GRADE CAMPUS (233901043)**

**STAAR Outcomes**

This section provides STAAR performance and Academic Growth outcomes. Academic Growth measures whether students are maintaining performance or improving from year to year. Please note that due to the cancellation of spring 2020 State of Texas Assessments of Academic Readiness (STAAR) due to the COVID-19 pandemic, the performance of this year's report is not updated.

	State	District	Campus	African American							Two or More Races	Econ Disadv
				Hispanic	White	American Indian	Asian	Pacific Islander	Races			
<b>STAAR Performance Rates at Approaches Grade Level or Above (All Grades Tested)</b>												
All Subjects	2019	78%	72%	69%	72%	69%	77%	-	82%	-	*	64%
	2018	77%	68%	63%	39%	63%	78%	*	100%	-	100%	59%
ELA/Reading	2019	75%	69%	73%	88%	73%	78%	-	*	-	*	69%
	2018	74%	66%	68%	44%	68%	78%	*	*	-	*	63%
Mathematics	2019	82%	77%	76%	88%	76%	81%	-	*	-	*	72%
	2018	81%	73%	70%	33%	70%	81%	*	*	-	*	65%
Writing	2019	68%	58%	61%	*	60%	75%	-	*	-	*	54%
	2018	66%	55%	59%	40%	59%	61%	-	*	-	*	55%
Science	2019	81%	75%	68%	60%	68%	81%	-	*	-	*	63%
	2018	80%	70%	58%	*	57%	88%	*	*	-	*	52%
Social Studies	2019	81%	73%	56%	20%	56%	65%	-	*	-	*	48%
	2018	78%	69%	51%	*	50%	81%	*	*	-	*	47%
<b>STAAR Performance Rates at Meets Grade Level or Above (All Grades Tested)</b>												
All Subjects	2019	50%	40%	38%	24%	37%	55%	-	73%	-	*	31%
	2018	48%	36%	32%	3%	31%	54%	*	100%	-	50%	26%
ELA/Reading	2019	48%	38%	44%	13%	43%	62%	-	*	-	*	36%
	2018	46%	35%	36%	0%	35%	57%	*	*	-	*	30%
Mathematics	2019	52%	43%	42%	38%	41%	59%	-	*	-	*	36%
	2018	50%	37%	36%	0%	35%	59%	*	*	-	*	29%
Writing	2019	38%	28%	31%	*	31%	41%	-	*	-	*	25%
	2018	41%	29%	31%	20%	30%	54%	-	*	-	*	25%
Science	2019	54%	43%	35%	20%	34%	65%	-	*	-	*	28%
	2018	51%	38%	30%	*	29%	54%	*	*	-	*	23%
Social Studies	2019	55%	47%	25%	0%	24%	38%	-	*	-	*	18%
	2018	53%	42%	19%	*	19%	38%	*	*	-	*	15%
<b>STAAR Performance Rates at Masters Grade Level (All Grades Tested)</b>												
All Subjects	2019	24%	17%	16%	3%	15%	29%	-	55%	-	*	11%
	2018	22%	13%	12%	0%	11%	29%	-	82%	-	13%	8%
ELA/Reading	2019	21%	13%	19%	0%	18%	43%	-	*	-	*	14%
	2018	19%	11%	13%	0%	13%	31%	*	*	-	*	9%
Mathematics	2019	26%	20%	16%	0%	16%	28%	-	*	-	*	11%
	2018	24%	15%	14%	0%	13%	28%	*	*	-	*	10%
Writing	2019	14%	8%	12%	*	11%	19%	-	*	-	*	8%
	2018	13%	6%	8%	0%	8%	18%	-	*	-	*	5%
Science	2019	25%	16%	14%	0%	13%	19%	-	*	-	*	9%
	2018	23%	14%	12%	*	11%	35%	-	*	-	*	8%
Social Studies	2019	33%	27%	13%	0%	13%	19%	-	*	-	*	9%
	2018	31%	23%	9%	*	9%	31%	-	*	-	*	7%
<b>Academic Growth Score (All Grades Tested)</b>												
Both Subjects	2019	69	70	68	72	68	69	-	80	-	*	67
	2018	69	67	69	41	69	73	*	*	-	*	67
ELA/Reading	2019	68	68	73	75	74	68	-	*	-	*	72
	2018	69	66	71	50	71	80	*	*	-	*	70
Mathematics	2019	70	72	64	69	64	70	-	*	-	*	62
	2018	70	68	67	31	67	68	*	*	-	*	65

7 Indicates that the data for this item were statistically improbable or were reported outside a reasonable range.  
 - Indicates zero observations reported for this group.  
 \* Indicates results are masked due to small numbers to protect student confidentiality.  
 n/a Indicates data reporting is not applicable for this group.

**Texas Education Agency**  
**2019-20 School Report Card**  
**DEL RIO MIDDLE 8TH GRADE CAMPUS (233901043)**

**Prior-Year Non-Proficient and Student Success Initiative STAAR Outcomes**

Progress of Prior-Year Non-Proficient Students shows STAAR performance rates for students who did not perform satisfactorily in 2017-18 but did in 2018-19. Student Success Initiative shows rates related to the requirement for students to demonstrate proficiency on the reading and mathematics STAAR in grades 5 and 8. Please note that due to the cancellation of spring 2020 State of Texas Assessments of Academic Readiness (STAAR) due to the COVID-19 pandemic, this year's report is not updated.

Progress of Prior-Year Non-Proficient Students	State	District	Campus	American							Two or More Races	Econ Disadv
				African American	Hispanic	White	Indian	Asian	Pacific Islander			
<b>Sum of Grades 4-8</b>												
Reading												
2019	41%	39%	<b>40%</b>	*	41%	17%	-	-	-	-	41%	
2018	38%	32%	<b>33%</b>	*	33%	*	*	-	-	-	31%	
Mathematics												
2019	45%	45%	<b>47%</b>	*	47%	33%	-	-	-	-	45%	
2018	47%	44%	<b>40%</b>	*	41%	*	*	-	-	-	39%	
<b>Students Success Initiative</b>												
<b>Grade 8 Reading</b>												
Students Meeting Approaches Grade Level on First STAAR Administration												
2019	78%	58%	<b>61%</b>	80%	61%	46%	-	-	-	-	59%	
Students Requiring Accelerated Instruction												
2019	22%	42%	<b>39%</b>	20%	39%	54%	-	-	-	-	41%	
STAAR Cumulative Met Standard												
2019	85%	66%	<b>68%</b>	80%	68%	46%	-	-	-	-	67%	
<b>Grade 8 Mathematics</b>												
Students Meeting Approaches Grade Level on First STAAR Administration												
2019	82%	64%	<b>64%</b>	40%	64%	69%	-	-	-	-	62%	
Students Requiring Accelerated Instruction												
2019	18%	36%	<b>36%</b>	60%	36%	31%	-	-	-	-	38%	
STAAR Cumulative Met Standard												
2019	88%	76%	<b>76%</b>	80%	76%	69%	-	-	-	-	74%	

? Indicates that the data for this item were statistically improbable or were reported outside a reasonable range.  
 - Indicates zero observations reported for this group.  
 \* Indicates results are masked due to small numbers to protect student confidentiality.  
 n/a Indicates data reporting is not applicable for this group.



Texas Education Agency  
2019-20 School Report Card  
DEL RIO MIDDLE 8TH GRADE CAMPUS (233901043)

This page is intentionally blank.

**SAN FELIPE DEL RIO CONSOLIDATED INDEPENDENT SCHOOL DISTRICT**

**DEL RIO MIDDLE SCHOOL 8<sup>TH</sup> GRADE**

**PARENT AND FAMILY ENGAGEMENT POLICY**

**2020-2021**

**STATEMENT OF PURPOSE**

- I. The San Felipe Del Rio Consolidated Independent School District administration, faculty, support staff, parents and community members shall develop, agree upon and distribute to parents a written Parent and Family Engagements Policy and School – Parent Compact. The policy shall set expectations and establish a framework for quality parental involvement participation. This shall be achieved as part of the district's improvement plan process.

The district values the role parents' play as the children's first teacher and the influence of their continued support towards enabling their children to meet the state's students' performance standards.

The following policy is in compliance with the legal requirements of ESSA, Section 1116(d). This policy will be available to all parents of the San Felipe Del Rio Consolidated Independent School.

**PARENT AND FAMILY ENGAGEMENT IN POLICY DEVELOPMENT**

- II. The TEAM of the San Felipe Del Rio Consolidated Independent School District Board of Trustees, administrators, teachers, support staff, parents and community, in partnership with public and private agencies, is committed to provide the support, resources and academic rigor to ensure that all students achieve educational and social excellence.

**SCHOOL – PARENT COMPACT**

- III. The School – Parent Compact shall outline the means by which parents and school will share responsibility for improved student academic achievement. An annual review and revision, if necessary, shall be part of the district and Campus Improvement Plan (CIP) process.

Parents are urged to sign and discuss the compact with their children's teacher during the first six weeks. The Title I Parent and Family Engagement Policy shall be reviewed and distributed to parents during the first six weeks of school, special called meetings, or other campus level initiatives during the school year.

**PARENTAL INVOLVEMENT OPPORTUNITIES**

- IV. The District's capacity to build strong partnership with parents shall be achieved by offering opportunities for parents to provide input and make recommendations regarding Title I programs. These opportunities shall be addressed at Migrant Parent Advisory Council (PAC), District Planning and Decision Making Committee (DPDM), Language Proficiency Assessment Committee (LPAC) committees and trainings. In addition, parent skills workshops, campus

volunteers, School readiness, parent trainings, literacy training and using technology, as appropriate, shall be provided for parents to foster parental involvement.

Information on the "Value and Utility of Parent's Contributions," and on how to reach out and communicate with parents as equal partners in the education of their children shall be scheduled and provided to staff during faculty meetings or other campus-level initiatives. The district will extend feasible and appropriate communication to integrate parent involvement programs, activities with Special Ed program, community agencies and private schools.

#### **STAFF AND PARENT COMMUNICATION**

- V. **Del Rio Middle School**: effort to communicate with parents the information about Title I, Part A programs, descriptions and explanation of the curriculum, academic assessments used to measure student progress and the proficiency levels students are expected to meet during home visits and parent conferences.
- VI. Monthly newsletters, menus, calendars, teacher notes, the school marquee, home visits, parent conferences, personal contacts, phone calls, district email, district website, district Facebook page, and written notices will be used to establish and maintain open lines of communication with parents. All information oral or written related to school parent programs shall be provided in a format and language that the parents can understand.

#### **EVALUATION**

- VII. Parents will be informed and invited to participate in the annual evaluation of the content and effect of the District Parent and Family Engagement Policy and practices. They will also consider:
- Academic quality of Title I, Part A Schools
  - Identifying way to overcome barriers which may limit participation by parents
  - Review and revision of Campus School – Parent Compact
  - Increase parent involvement
- The annual evaluation findings shall be used to revise and design parent policy practices and strategies to improve parental involvement at the district and campus level.

#### **RESEVATION OF FUNDS**

- VIII. Parents of children receiving Title I, Part A services are involved and informed in the decisions regarding how these funds are allotted for parental involvement activities.

#### **ADOPTION**

This School Parent and Family Engagement Policy has been developed jointly with, and agreed on with parents of children participating in Title I, Part A Programs, as evidenced by parents, administrators, and counselors. This policy was approved by **Del Rio Middle School 8<sup>th</sup> grade** on October 16, 2020 and will be effect for the period of 2020-2021. The school will distribute this policy to all parents of participating Title I, Part A children on or before October 16, 2020. **Del Rio Middle School 8<sup>th</sup> grade** notification to parents of this policy will be in an understandable and uniform format. The campus will provide a copy of this policy to parents in the languages the parents can understand.

**SAN FELIPE DEL RIO CISD**  
**DEL RIO MIDDLE SCHOOL 8<sup>TH</sup> GRADE**  
**POLÍTICA DE COMPROMISO DE PADRES Y FAMILIAS 2020-2021**  
**LA DECLARACION DE PROPOSITO**

- I. La administración, los profesores, la facultad, el apoyo de personal, los padres de familia y miembros de la comunidad del Distrito Escolar Independiente Consolidado San Felipe Del Rio desarrollarán, se pondrán de acuerdo y les distribuirán a los padres por escrito una Póliza de Participación de Padres de Familia y un Convenio de Escuela – Padre – Estudiante. La póliza expondrá expectativas y establecerá un sistema para participación de calidad de los padres. Esto será realizado como parte del proceso del plan de mejoramiento del distrito.

El distrito valora el papel que toman los padres como el primer maestro de sus hijos y la influencias del apoyo continuo para lograr que sus hijos satisfagan las normas estatales del funcionamiento de un estudiante.

La siguiente póliza está de acuerdo con los requisitos legales del Acta de ESSA, Sección 1116 (b).

**PARTICIPACIÓN DE LOS PADRES Y LA FAMILIA EN EL DESARROLLO DE POLÍTICAS**

- II. El EQUIPO del Consejo Directivo, los administradores, los profesores, el apoyo de personal, los padres de familia y la comunidad del Distrito Escolar Independiente Consolidado San Felipe Del Rio, al asociarse con las agencias públicas y privadas, están comprometidos a proveer el apoyo, los recursos y el rigor académico para asegurar que todos los estudiantes lleven a cabo excelencia educativa y social.

**EL CONVENIO DE ESCUELA – PADRE – ESTUDIANTE**

- III. El Convenio de Escuela – Padre – Estudiante buscara los medios por los cuales los padres, la escuela y los estudiantes compartirán responsabilidad para una realización académica mejora al estudiante o un dominio de las altas normas del estado. Un repaso y una revisión anual, si es necesario, serán parte del proceso del plan de mejoramiento al nivel del distrito y el campo escolar.

Aunque las firmas no serán requeridas, se les urge a los padres que firmen y discutan el convenio con sus hijos y profesores.

La Póliza de la Participación de Padres y el Convenio de Escuela – Padre – Estudiante serán repasados y distribuidos a los padres durante las primeras seis semanas del año escolar por medio

de la matrícula, Conocer el Maestro, juntas llamadas especiales y otros iniciativas al nivel del campo escolar.

### **LAS OPORTUNIDADES Y PARTICIPACION DE PADRES DE FAMILIA**

- IV. La capacidad del distrito al hacer una sociedad colectiva fuerte con los padres será realizada al ofrecer oportunidades para que los padres provean información y hagan recomendaciones relativo a los programas del Título I. Además, el distrito les ayudara a los padres a entender el contenido académico del estado y normas de realización, evaluación estatales y locales y como observar el progreso de sus hijos. Estas oportunidades serán programadas en el Consejo Consultivo de Padres Migrantes (PAC), Comité de Planeación y Toma de Decisiones del Distrito (DPDM), y el Comité de Apreciación de Idioma y Pre eficiencia (LPAC), juntas llamadas especiales, y entrenamientos. Además, talleres de habilidades donde se aprenderá a ser buenos padres, alfabetismo, voluntarios del plantel, entrenamiento y uso de tecnología serán proveídos al personal durante las juntas de facultad del campo escolar y otros iniciativas al nivel del campo escolar.

La información en “el valor y servicio de las contribuciones de los padres” y como extenderse y comunicarse con los padres como compañeros iguales en la educación de sus hijos. Estos serán programados y proveídos al personal durante las juntas de la facultad del campo escolar y otros iniciativas al nivel del campo escolar.

Al punto factible y apropiado el distrito coordinara e integrara programas de participación del padre y actividades.

### **COMUNICACIÓN DE PADRES DE FAMILIA Y FACULTAD**

- V. **DEL RIO MIDDLE SCHOOL 8<sup>TH</sup> GRADE**: para comunicarle a los padres información sobre el Título I, Programas Parte A, descripciones y explicaciones del currículo, evaluación académicos usados para medir el progreso del estudiante, niveles de pre eficiencia de los estudiantes que se esperan satisfacer. Toda la información oral o escrita relacionada a los padres de familia será proveída en una forma y lenguaje que los padres pueden entender durante conferencias con padres.
- VI. Los boletines, las notas de maestro, la marquesina de escuela, las conferencias, el contacto personal, las llamadas de teléfono, Skylert del distrito email del distrito escolar, internet del distrito escolar, Facebook del distrito escolar, notasescritas se usaran para establecer y mantener las líneas abiertas de comunicación con padres de familia.

### **LA EVALUACIÓN**

- VII. Los padres participara en la evaluación anual de contenido y el efecto de las prácticas y Póliza de la Participación de los padres del distrito. Ellos también consideran:

La calidad académica del Título I, Escuelas Parte A

Identificar las maneras para vencer las barreras cuales pueden limitar la participación de los padres

El repaso y revisión de la Póliza de Participación de Padres de Familia y del Convenio de la Escuela – Padre – Estudiante

Aumentar la participación de los padres de familia

Los descubrimientos de la evaluación anual serán usados para revisar y hacer estrategias y prácticas de póliza de los padres para mejorar la participación de los padres a los niveles del distrito y el plantel escolar.

#### **RESERVACIÓN DE FONDOS**

- VIII. Los padres de estudiantes que reciben servicios a través del Título I, Parte A deben tener la oportunidad de participar en las decisiones, en cuanto a la distribución de los fondos destinados para las actividades de los padres de familia.

#### **ADOPCIÓN**

Esta Póliza de Participación de Padres de Familia del Plantel se ha desarrollado de común acuerdo, con los padres de los estudiantes que participan en los programas Título I, Parte A según evidenciado por Padres de Familia, Administradores, y Consejeros. Esta póliza fue aprobada por **Del Rio Middle School 8<sup>th</sup> grade** el 19 de octubre del 2020 y será proporcionada efectivo para el período del 2020-2021. El plantel distribuirá esta póliza a todos los padres de los niños que participan en el Título I, Parte A en o antes del 16 de octubre del 2020. El plantel **Del Rio Middle School 8<sup>th</sup> grade** notificara a los padres de familia de esta póliza que estará en un Formato comprensible y uniforme, al grado practicable, proporcionara una copia de esta póliza a los padres de familia en el idioma que los padres puedan entender.



## Student-Parent-School Compact Del Río Middle School 8<sup>th</sup> Grade

### Student Agreement

As a student, I agree to:

- Attend school daily and on time.
- Follow all school rules and be respectful to other.
- Complete and return all homework assignments.
- Be a positive role model to my classmates and others at school.

### Parent Agreement

As a parent, I agree to:

- Ensure my child is punctual and attends school daily.
- Establish a time for homework and provide a quiet, well-lit place for study.
- Volunteer; attend parent conferences and school activities.
- Keep communication with my child's teacher and be available for questions.
- Read with my child and/or encourage daily reading at home.

### School Agreement

As a school, we agree to:

- Make school a positive, supportive, safe place with a healthy learning environment.
- Provide opportunities for parent meetings and trainings enhancing parental engagement.
- Provide quality curriculum and instructional practices that allow students to become effective and productive citizens.
- Offer multiple methods of communication building a parent-school relationship.



## Compacto estudiante-padre-escuela Del Río Middle School 8th Grade

### Acuerdo estudiantil

Como estudiante, acepto:

- Asistir a la escuela todos los días ya tiempo.
- Siga todas las reglas de la escuela y sea respetuoso con los demás.
- Completar y devolver todas las tareas asignadas.
- Ser un modelo positivo para mis compañeros de clase y otros en la escuela.

### Acuerdo de padres

Como padre, acepto:

- Asegurarme de que mi hijo sea puntual y asista a la escuela todos los días.
- Establezca un tiempo para la tarea y proporcione un lugar tranquilo y bien iluminado para estudiar.
- Voluntario, asistir a conferencias de padres y actividades escolares.
- Mantener comunicación con el maestro de mi hijo y estar disponible para preguntas.
- Leer con mi hijo y / o fomentar la lectura diaria en casa.

### Acuerdo escolar

Como escuela, aceptamos:

- Haga de la escuela un lugar positivo, de apoyo, seguro y con un ambiente de aprendizaje saludable.
- Brindar oportunidades para reuniones de padres y capacitaciones que mejoren la participación de los padres.
- Proporcionar un currículo de calidad y prácticas de instrucción que permitan a los estudiantes convertirse en ciudadanos efectivos y productivos.
- Ofrecer múltiples métodos de comunicación para construir una relación padre-escuela.



# TITLE I

**Del Rio Middle School**

**7<sup>th</sup> Grade & 8<sup>th</sup> Grade**

**Annual Title I Meeting  
Tuesday October 13, 2020  
10:00 am**

**Junta Anual de Titulo I  
Martes, 13 de octubre  
A las 10:00 am**

**Presenter**

Director, Federal & State Programs

**Ruby Adams**

**Join Zoom Meeting**

**<https://zoom.us/j/9160505301>**

Meeting ID: 916 050 5301

Passcode: 08hr5P

# TITLE I

## **Del Rio Middle School**

**Annual Title I Meeting  
Tuesday October 15, 2020  
3:30 pm**

**Junta Anual de Titulo I  
Martes, 15 de octubre  
A las 3:30 pm**

### **Presenter**

*Director, Federal & State Programs*

**Ruby Adams**

### **Join Zoom Meeting**

**<https://zoom.us/j/9160505301>**

Meeting ID: 916 050 5301

Passcode: 08hr5P

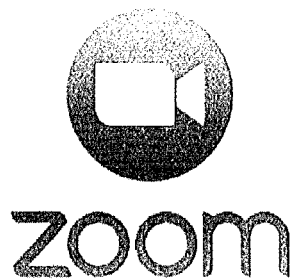
Title I Meeting  
Del Rio Middle School  
8<sup>th</sup> grade  
Parents attending @ 10:00am  
October 13, 2020  
Guest Speaker: Mrs. Adam

Ana Hawkinson  
Kim Martinez  
Raul Hurtado  
Angelica Hurtado

Parents Attending @ 3:30pm  
October 15, 2020  
Guest Speaker: Mrs. Adams

Second Title I Parent Meeting. 7<sup>th</sup> and 8<sup>th</sup> grade English/Spanish.

Mrs. Chavarria  
Brenda Aviles  
Santana



meeting\_saved\_chat

09:56:05 From rufina.adams@sfdrcisd.org : First Title I Parent Meeting/Training, October 13, 2020 at 10 am  
09:59:16 From iPhoneKimmie : Kim Martinez parent of Jeremy Martinez  
09:59:51 From Ana Hawkinson : Ana Hawkinson parent of Monika Gonzalez 8th grade  
10:23:57 From Ana Hawkinson : Can you email me that document, please.  
10:26:55 From Raul Hurtado : Hannah Hurtado 7th Grade  
10:28:34 From Raul Hurtado : Thank You!  
10:28:57 From rufina.adams@sfdrcisd.org : Parent Compact/Engagement Policy, October 13, 2020 at 10:30 am  
10:29:03 From rufina.adams@sfdrcisd.org : Ruby Adams  
10:29:21 From iPhoneKimmie : Kim Martinez -Jeremy Martinez 8 grade  
10:29:25 From Ana Hawkinson : Ana Hawkinson parent of Monika Gonzalez 8th grade  
10:29:39 From iPhoneKimmie : thank u  
10:29:43 From Raul Hurtado : Raul G. Hurtado III  
10:29:44 From Raul Hurtado : Thank You  
10:29:54 From Angelica Hurtado : Angelica Hurtado - 7th grade Hannah Hurtado

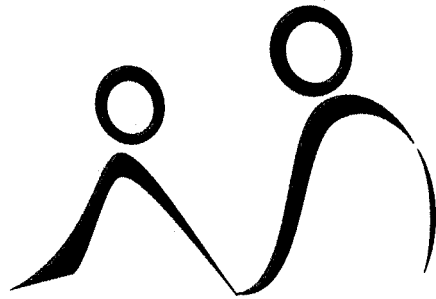
meeting\_saved\_chat

15:29:52 From Angelica Hurtado : Buenas Tardes Ms.Santana  
15:31:49 From iPhone : Mrs Chavarria for isaiah lopez  
15:32:23 From iPhone : Spanish is ok  
15:32:33 From rufina.adams@sfdr-cisd.org : Second Title I Parent Meeting.  
7th and 8th grade, October 15, 2020 at 3:30 pm, English/Spanish  
15:33:38 From iPhone : no importa yo hablo los idiomas  
15:53:44 From rufina.adams@sfdr-cisd.org : Parent Compact/Engagement Policy  
Spanish, October 15, 2020, 3 pm  
15:56:01 From Angelica Hurtado : yes  
15:58:04 From Victoria Aviles : Brenda Aviles  
15:59:01 From Victoria Aviles : Gracias!

San Felipe Del Rio CISD  
McKinney Vento/Families in Transition  
Staff Training, November 17, 2020

AGENDA

- I. Welcome
- II. McKinney-Vento Act
- III. How do families become homeless?
- IV. Parent and Student Warning Signs
- V. Parent and Student Reactions
- VI. Key Provisions
- VII. Questions/Concerns/Discussion



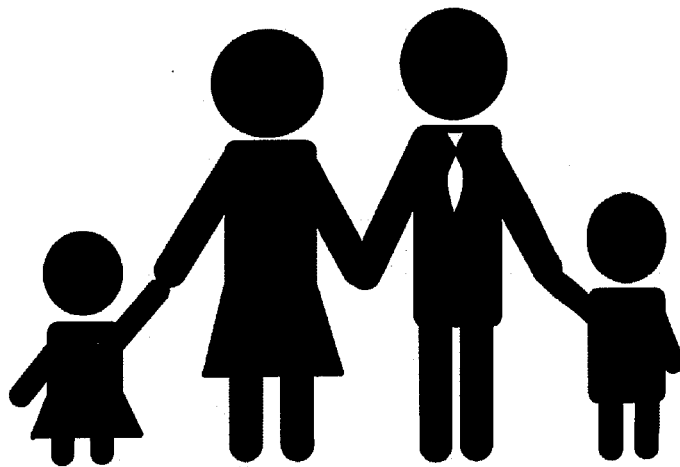
**McKinney-Vento**

Serving Students In Transition

San Felipe Del Rio CISD  
The Value and Utility of Parental Engagement  
Staff Training, November 17, 2020

AGENDA

- I. Welcome
- II. ESSA Title I requirements
- III. What is Parent and Family Engagement?
- IV. Benefits
- V. Barriers
- VI. Reflection
- VII. Questions/Concerns/Discussion



Lifefourneytoperfection.blogspot.com 2013

meeting\_saved\_chat

07:24:30 From Rufina Adams : Required staff meeting, McKinney-Vento and  
Utility and Value, Del Rio Middle School, November 17, 2020, 7:30 am  
07:24:43 From Julia McKinney : Julia McKinney  
07:24:50 From Mrs. Gallegos : Stacey Gallegos, Choir  
07:24:53 From Rufina Adams : Ruby Adams, Federal Programs Director  
07:25:00 From Anna Hawkinson : Ana Hawkinson Parental Aid  
07:25:12 From Julia McKinney : Oops. Julia McKinney, 8th grade teacher  
07:26:59 From Juan Cirildo : Juan A. Cirildo  
07:34:08 From erica.hernandez : Erica Hernandez  
07:34:09 From Kayla Thomas : Kayla Thomas is present  
07:34:14 From naela.dominguez : Naela Dominguez  
07:34:14 From Michelle Spiers : Michelle Spiers  
07:34:15 From KT Thomas : Kaitlyn Thomas  
07:34:19 From Mrs. Musquiz-Ortiz : Munylda Musquiz  
07:34:19 From Serrano : Bertha Serrano  
07:34:21 From Maria Sigley : Maria Sigley  
07:34:21 From Kristin Riemann : Kristin Riemann  
07:34:27 From teresa.garcia@sfd-r-cisd.org : Teresa García  
07:34:27 From michelle : Yvonne Michelle Gomez  
07:34:43 From Juan Mireles : Juan Mireles  
07:34:45 From angelica.rivera : Angelica Rivera  
07:36:43 From Mrs. Baker : Margo Baker  
07:37:05 From Mr. Guerrero aka Mr. G aka El Mister : Roberto Guerrero  
07:37:27 From Epi : Epifanio Segura III  
07:37:47 From Victor Alvarez : Victor Alvarez  
07:37:55 From Tony J : Anthony Jasso  
07:38:14 From MRS. Andrade : Gwen Andrade  
07:38:22 From Selina Rountree : Selina Rountree  
07:46:24 From Mr. White : Wilson White  
07:46:48 From Debra Luna : Debra Luna  
07:47:02 From Maricela Lombrana : Maricela Lombrana  
07:47:26 From Angela Jasso : Angela jasso  
07:47:39 From RM 224 : olivarez  
07:49:07 From Jesse Davila : Jesse Davila  
07:50:02 From Lori Esparza : Lori Esparza  
07:50:29 From fernanda's iPhone : Fernanda De los Santos  
07:50:56 From Jesse Brijalba : Jesse Brijalba  
07:51:16 From Mrs. Trevino : Miriam Treviño  
07:54:05 From Joanna Zamora : JoAnna Zamora  
07:54:05 From Claudia Faz : Claudia Faz  
07:54:24 From Mr. Bowman : Josh Bowman



# DRMS 8th Grade Staff

ELA	Ms. Gomez	Zoom
	Mrs. Ortiz	Zoom
	Mrs. Esparza	Zoom
	Mrs. Luna	Zoom
	Mr. Guerrero	Zoom
	Mrs. Lombrana	Zoom
	Mrs. Serrano	Zoom
	Mr. Davila	Zoom
	Mrs. Riemann	Zoom
	Mrs. Roundtree	Zoom
	Mrs. Andrade	Zoom
Science	Mrs. Garcia	Zoom
	K. Thomas	Zoom
	Mrs. Mckinney	Zoom
	Mr. Segura	Zoom
	Kt. Thomas	Zoom
Math	Mrs. Sigley	Zoom
	Mr. Bowman	Zoom
	Mrs. Musquiz	Zoom
	Mr. Olivares	Zoom
	Mrs. Jasso	Zoom
	Mrs. Spiers	Zoom
Social Studies	Mrs. Faz	Zoom
	Mrs. Jimenez	<i>Elicia Jimenez</i>
	Mrs. Zamora	Zoom
	Mr. Mireles	Zoom
	Mr. White	zoom
Fine Arts	Mr. Brijalba	Zoom
	Mrs. Gallegos	Zoom
	Mr. Tallier	
	Mr. Alvarez	Zoom
	Mrs. Hernandez	Zoom
Electives	Mrs. Baker	Zoom
	Mrs. Dominguez	Zoom
	Mrs. Trevino	Zoom

	Mr. Menchaca	<i>Ramón Menchaca</i>
Keyboarding/ technology	Mrs. De Los Santos	Zoom
	Mr. Jasso	Zoom
<i>GTT</i>	Mr. Reed	<i>Reed</i>
ISS	Mr. Delgado	7th grade
Coaches	Ms. Galindo	<i>Galindo</i>
	Mr. Cardenas	<i>Sobea Cardenas</i>
	Mrs. Gee	Zoom
	Mrs. Rivera	Zoom
	Mr. Gomez	<i>Gomez</i>
	Mrs. Castillo	
Special ED	Mr. Cirildo	Zoom
Administration	Mrs. Salas	Zoom
	Mr. Soto	<i>Soto</i>
Counselors	Ms. Girby	<i>Girby</i>
	Mrs. Wille	<i>Wille</i>