

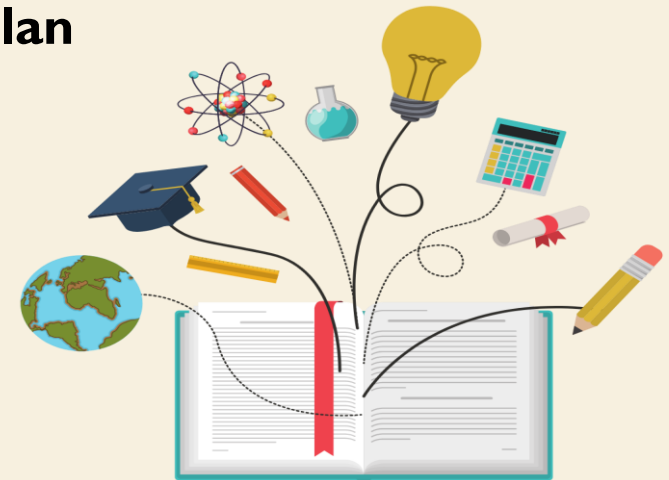
TITLE I ANNUAL PARENT TRAINING 2020-2021



**SAN FELIPE DEL RIO CISD
FEDERAL AND STATE PROGRAMS**

AGENDA

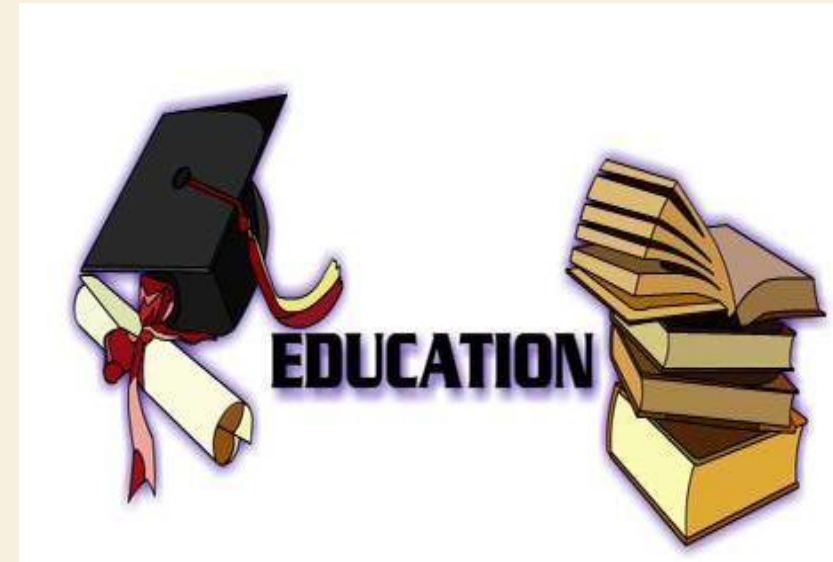
- **Welcome and Introductions**
- **Education is Key**
- **What is Title I?**
- **How does Title I work?**
- **ESSA Grant Funds**
- **Campus Allocations/Reservations**
- **Planning Cycle**
- **District and School Family and Engagement Policy Plan**
- **School-Parent Compacts**
- **District & Campus Plans**
 - **Curriculum**
 - **Assessment**
- **Parents Rights to Know**
- **How can I be involved?**
- **Questions ???**



EDUCATION IS KEY

We ALL want our children to be:

- To be successful in school and in life.
- To be happy.
- To be respectful, honest and hard working.
- To be good, productive members of society.
- To have a better life than we had.



WHAT IS TITLE I?

- Title I is the largest Federal assistance program for our nation's schools.
- The goal of Title I is a higher quality of education for every child.
- The program serves millions of children in elementary and secondary schools each year. **ALL SFDRCID** campuses are Title I schools.
- Provides federal funding to improve basic programs.
- Provides all children a significant opportunity to receive a fair, equitable, and high quality education and to close education achievement gaps.



HOW DO TITLE PROGRAMS WORK?

- The federal government provides funding to states each year for Title Programs (Every Student Succeeds Act-ESSA).
- The Texas Education Association (T.E.A.) sends the money to school districts.
- The school district identifies eligible schools and provides Title I funds based upon need.
- Title I determination is based on district's free/reduced lunch status.
- Receiving federal funding (Title I dollars) to supplement the school's existing programs.
These dollars are used for:
 - Identifying students experiencing academic difficulties and providing timely assistance to help these students meet the state's content standards. (tutorials, STAAR)
 - Purchasing supplemental staff, programs, materials and supplies.
 - Conducting parental involvement meetings, trainings and activities.
 - Recruiting, hiring, supporting and retaining effective teachers and para-professionals.



2020-2021 ESSA GRANT FUNDS

(EVERY STUDENT SUCCEEDS ACT)

| | |
|---|--------------------|
| TITLE I, PART A IMPROVING BASIC PROGRAMS | \$3,375,893 |
| TITLE II, PART C MIGRANT | \$163,648 |
| TITLE II, PART A PROFESSIONAL DEVELOPMENT (SUPPORTING EFFECTIVE INSTRUCTION) | \$436,434 |
| TITLE III, PART A (BILINGUAL ELA) | \$165,420 |
| TITLE IV, PART A (STUDENT SUPPORT ACADEMIC PROGRAM-SSAP) | \$239,934 |
| TOTAL | \$4,381,329 |

CAMPUS ALLOCATIONS

Campus Allocation: Each campus is provided an amount of money based on number of eligible students on free/reduced lunch.

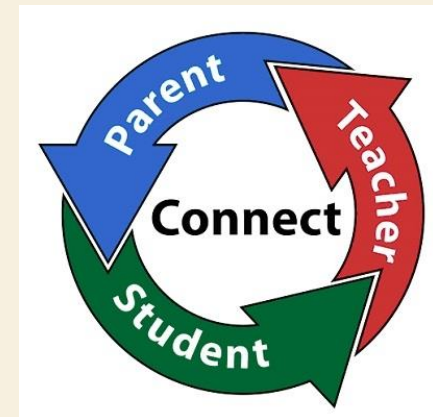
Campus Title I Program:

- Tutoring
- Instructional Coaches
- Professional Development
- Instructional supplies
- Mentoring new teachers
- Parent involvement activities
- Well-rounded education programs



PARENT & FAMILY ENGAGEMENT - DISTRICT RESERVATION

- **District Reservation:** Districts whose entitlement is \$500,000 or more must reserve at least 1% for district parent involvement.
- **90%** of the reservation must go to campuses - priority given to high-need campuses
 - Reserved funds must be used for **at least one** of these strategies:
 - Professional Development for staff
 - Home-based programs
 - Informational Dissemination
 - Collaboration with Community Organizations
 - Other related activities



WORKING TOGETHER

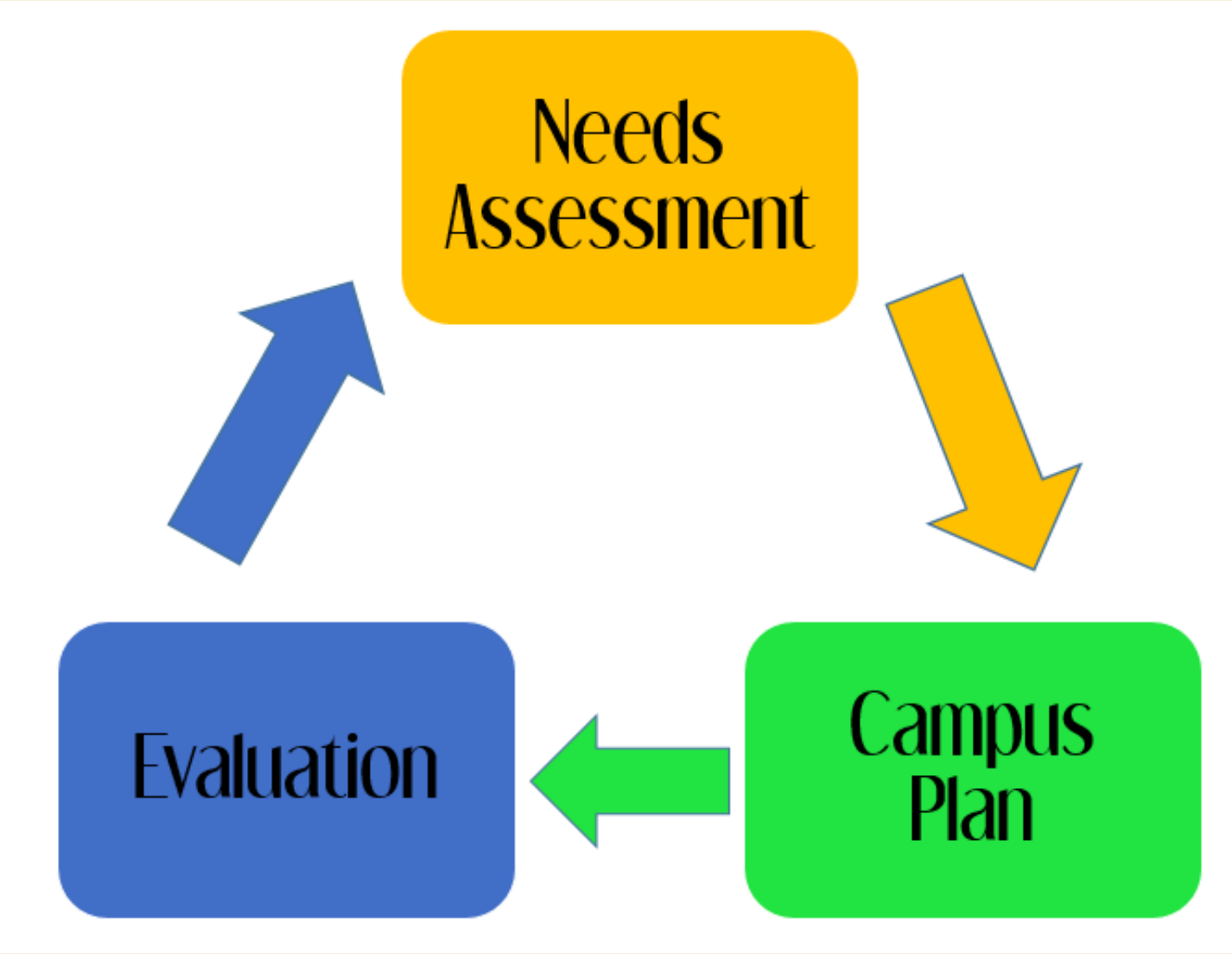
Title I law requires that all Title I schools and families work together.

How we work together is outlined in our:

1. **School Level Parent and Family Engagement Policy Plan**
2. **District Parent and Family Engagement Policy Plan**
3. **School Level School-Parent Compact**
4. **School-wide/Target Assistance/Title I Plan or CIP-Campus Improvement Plan and Comprehensive Needs Assessment (CNA).**
5. **District Improvement Plan (DIP) and District Comprehensive Needs Assessment (DCNA).**



PLANNING CYCLE



What are the needs?
Where is our focus?

What activities will meet
our needs?

Were we successful?
Do we need to change
direction?

DISTRICT AND CAMPUS POLICIES

Policy describes how campus will:

- Convene **TWO** Title I annual meetings in the fall.
- Provide flexible number of meetings in dual languages.
- Involve parents meaningfully in planning, review, & evaluation of parent policy and program.
- Provide timely information about parent activities.
- Provide info about curriculum & assessment.
- Offer opportunities upon request to discuss child's progress



Parents may access Parent and Family Engagement Policy online at <https://www.sfdr-cisd.org>.

SCHOOL-PARENT COMPACT

Written agreement outlining the partnership between school and home:

- **How responsibility for student academic achievement is shared between families, school and students**
- **Addresses high-quality curriculum and instruction**
- **Ways parents will support child's learning**
- **Importance of two-way communication**
- **Shared decision-making related to child's education**



PARENTS RIGHTS: TEACHER & PARA QUALIFICATIONS

Teacher & Paraprofessional Qualifications:

- Teacher's qualifications (state licensing) for grade & subject area assigned
- Teacher's qualifications - emergency or provisional status?
- Paraprofessional - credentials, if applicable

Teachers Not Appropriately Certified:

- If taught 4+ weeks by teacher without appropriate credentials
- To request information this information, please contact San Felipe Del Rio CISD Human Resources at 830-778-4001



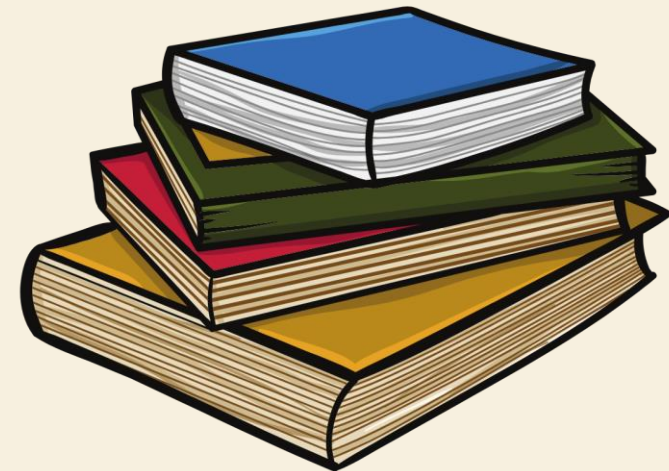
CURRICULUM

Elementary District Initiatives

- **Planning Protocol Dashboard**
- **Writing Initiative**
- **Power Hour**
- **STEM 2025**

Secondary District Initiatives

- **Planning Protocol**
- **ABYDOS**
- **iLit**
- **Power Block**
- **90 - Minute Block**



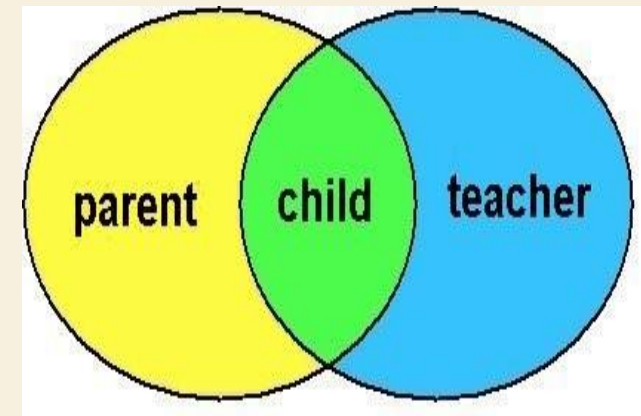
STATE ASSESSMENT

<http://texasassessment.com/families/>

The screenshot shows the Texas Assessment website interface for families. At the top left is the logo "TE★AS ASSESSMENT". To its right are three navigation buttons: "FOR FAMILIES" (highlighted in blue), "FOR ADMINISTRATORS & EDUCATORS", and "EN ESPAÑOL" (highlighted in orange). Below these is a horizontal menu with six items, each with an icon: "UNDERSTANDING YOUR CHILD'S SCORE" (question mark), "A+ ALL ABOUT THE STAAR TEST" (A+), "HOW TO HELP MY CHILD PREPARE" (pencil), "LITERACY AND LEXILE® MEASURES" (book), "QUANTILE® MEASURES" (plus/minus), and "FAQs" (question mark). The main content area features a large heading "LEARN MORE ABOUT YOUR CHILD'S SCORE" over a blurred background of students. On the left is a cartoon illustration of a smiling boy with black hair holding two books; the top book is green and white with "THE NAMESAKE" and "LAURA 1210L" on the spine. On the right is a purple login box with the text "Log in to the secure student portal to learn more about your child's score and how to help improve it." Below this text are input fields for "Unique Student Access Code" (a text box labeled "Access Code"), "Student's Date of Birth" (three dropdown menus for "Month", "Day", and "Year"), and a "LOG IN TO STUDENT PORTAL" button with a lock icon. At the bottom of the purple box is a white link "→ Find My Access Code".

HOW CAN YOU GET INVOLVED?

- Join our parent organizations {PTA/PTO Committees}
- “Follow” and “Like” us on social media
- Become part of the Title I Planning Team
- Help develop the Parent and Family Engagement Policy and School-Parent Compact
- Attend school Math/Reading/Special Events Nights
- Share your thoughts via surveys
- Become a volunteer
- Attend concerts and performances, UIL events, athletic events
- Communicate with your child’s teacher often
- Schedule and attend parent conferences
- Join Booster Clubs
- Check your child’s grades daily/weekly



SFDRCISD CONTACT INFORMATION

| | | |
|--|------------------------|---------------------|
| Principal | | |
| Assistant Principal | | |
| Counselor | | |
| Nurse | | |
| Federal and State Programs Department | Ruby Adams | 830-778-4153 |
| Food Service Department | David Perales | 830-778-4169 |
| Student Services Department | Frenchey McCrea | 830-778-4185 |
| Transportation Department | Rick Maldonado | 830-778-4222 |

QUESTIONS

When **schools, families,**
and **community groups**
work together to support **learning,**
children tend to do
better in **school,**
stay in school longer,
and **like** school more.

– Anne Henderson
& Karen Mapp



PTOTODAY.COM

For further information, please call your school office or
Ms. Rufina Adams, Federal and State Program Director, @ 830-778-4153.