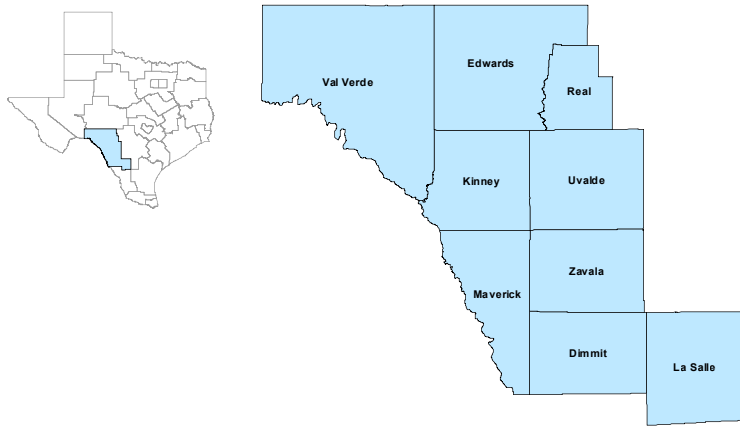




Area	SOC Code	Occupation Title	Estimated Employment (2018)	Projected Employment (2028)	Change In Employment	Percentage Change	Annualized Percent Growth	Annual Openings	Education
Middle Rio Grande	29-2041	Emergency Medical Technicians and Paramedics	298	404	106	35.57	3.09	34	Postsecondary nondegree award
Middle Rio Grande	29-2000	Health Technologists and Technicians	1,570	1,847	277	17.64	1.64	151	Information not available
Middle Rio Grande	29-0000	Healthcare Practitioners and Technical Occupations	3,040	3,524	484	15.92	1.49	250	Information not available
Middle Rio Grande	31-0000	Healthcare Support Occupations	1,781	2,198	417	23.41	2.13	265	Information not available
Middle Rio Grande	31-9092	Medical Assistants	184	222	38	20.65	1.9	26	Postsecondary nondegree award
Middle Rio Grande	31-1014	Nursing Assistants	529	588	59	11.15	1.06	69	Postsecondary nondegree award
Middle Rio Grande	29-9000	Other Healthcare Practitioners and Technical Occupations	106	154	48	45.28	3.81	12	Information not available
Middle Rio Grande	31-9000	Other Healthcare Support Occupations	400	515	115	28.75	2.56	63	Information not available
Middle Rio Grande	29-2034	Radiologic Technologists	102	103	1	0.98	0.1	5	Associate's degree
Middle Rio Grande	29-1141	Registered Nurses	907	1,001	94	10.36	0.99	59	Bachelor's degree

Middle Rio Grande Workforce Development Area

April 2021



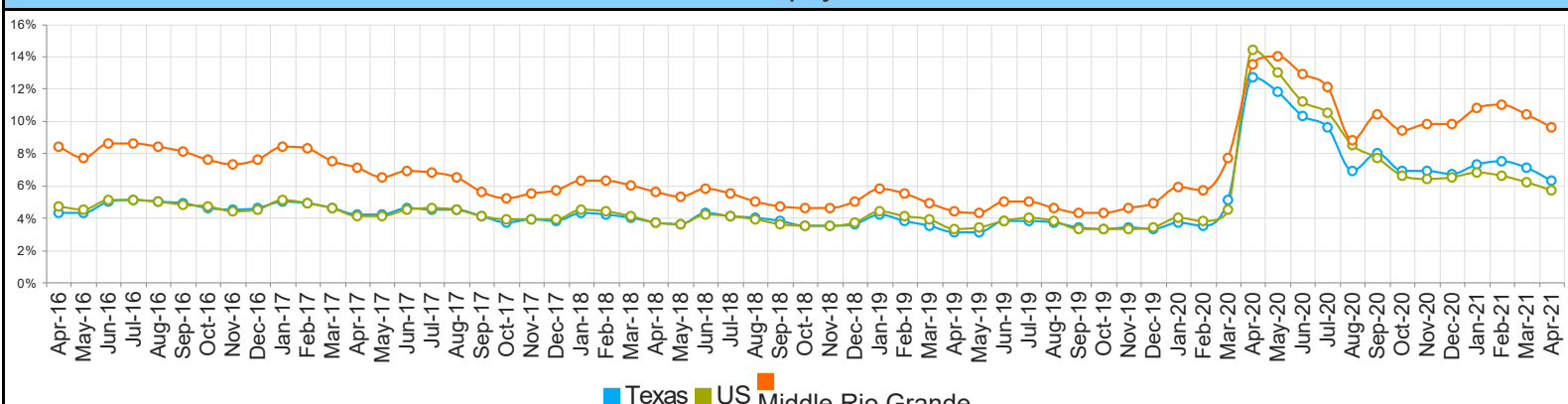
WDA Labor Force Statistics				
	Apr-21	Mar-21	Apr-20	Yearly Change
Civilian Labor Force	73,508	75,595	72,296	1,212
Employed	66,469	67,738	62,571	3,898
Unemployed	7,039	7,857	9,725	-2,686
Unemployment Rate	9.6%	10.4%	13.5%	-3.9%

Texas Labor Force Statistics				
	Apr-21	Mar-21	Apr-20	Yearly Change
Civilian Labor Force	14,043,919	14,094,131	13,326,311	717,608
Employed	13,162,609	13,087,177	11,627,585	1,535,024
Unemployed	881,310	1,006,954	1,698,726	-817,416
Unemployment Rate	6.3%	7.1%	12.7%	-6.4%

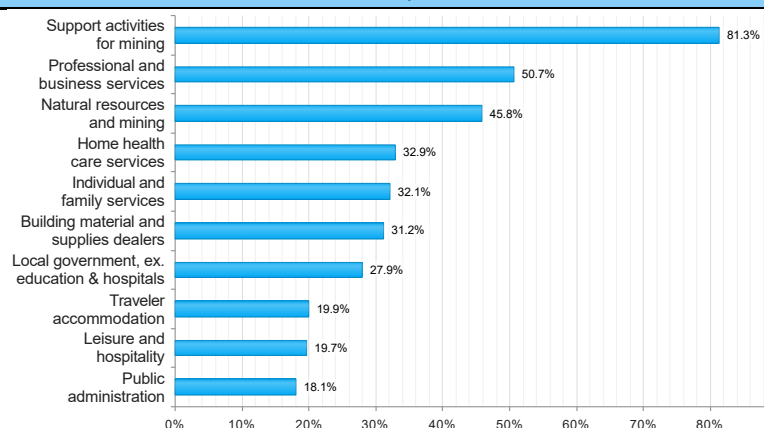
US Labor Force Statistics				
	Apr-21	Mar-21	Apr-20	Yearly Change
Civilian Labor Force	160,379,000	160,398,000	155,830,000	4,549,000
Employed	151,160,000	150,493,000	133,326,000	17,834,000
Unemployed	9,220,000	9,905,000	22,504,000	-13,284,000
Unemployment Rate	5.7%	6.2%	14.4%	-8.7%

Continued Claims for the Week of the 12th				
	Apr-21	Mar-21	Apr-20	Yearly Change
WDA	1,538	1,932	5,251	-3,713
Texas	163,934	210,643	960,717	-796,783

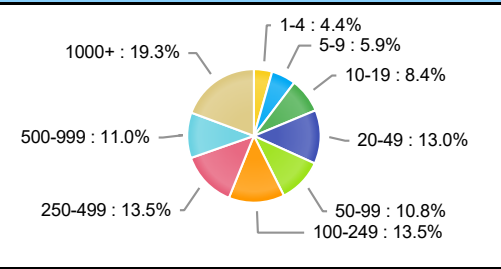
Historical Unemployment Rates



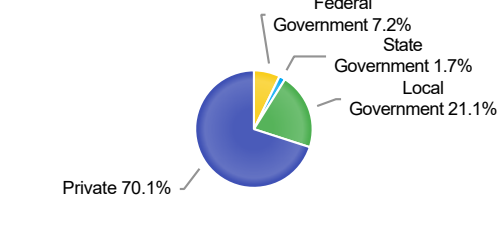
Projected Top Ten Fastest Growing Industries in WDA (% Growth 2018-2028)



Employment by Size Class (4th Quarter 2020)



Employment by Ownership (4th Quarter 2020)



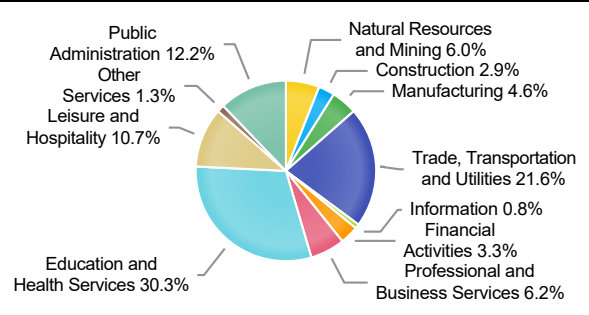
Average Weekly Wage (4th Quarter 2020)

	Q4 2020	Q3 2020	Q4 2019	Quarterly Change	Yearly Change
WDA	\$879	\$772	\$830	\$107	\$49
Texas	\$1,294	\$1,150	\$1,187	\$144	\$107
US	\$1,339	\$1,173	\$1,185	\$166	\$154

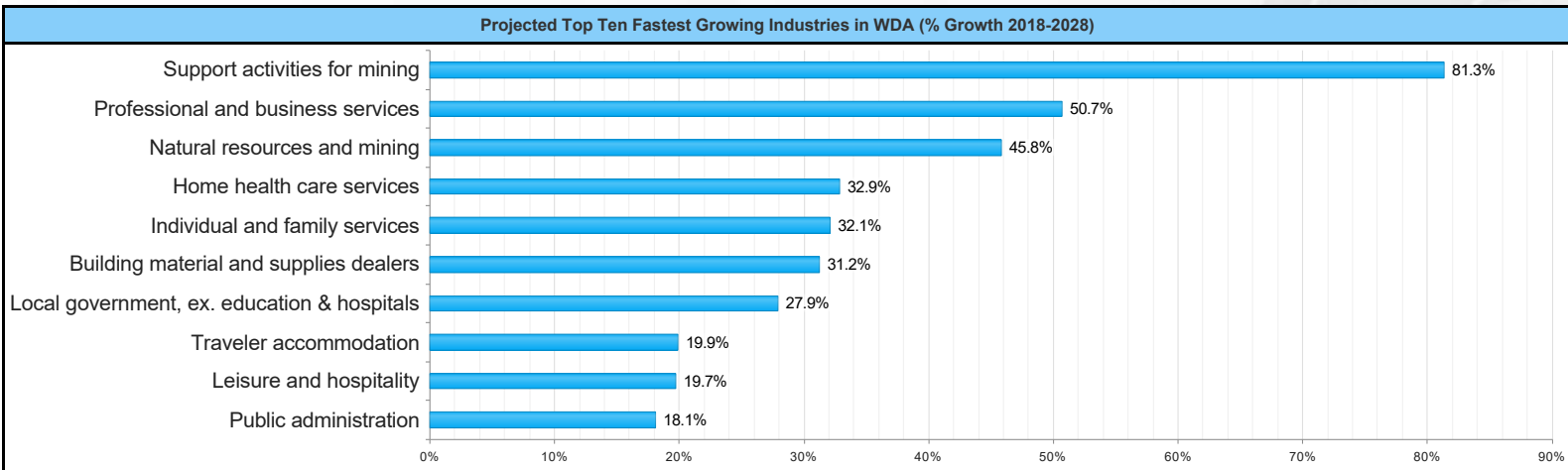
Employment by Industry (4th Quarter 2020, Percent Change)

Industry	Employment	% of Total	% Quarterly Change	% Yearly Change
Natural Resources and Mining	3,434	6.0%	9.3%	-20.4%
Construction	1,673	2.9%	2.3%	-9.6%
Manufacturing	2,615	4.6%	3.8%	-10.9%
Trade, Transportation and Utilities	12,352	21.6%	3.5%	-2.4%
Information	480	0.8%	2.3%	15.4%
Financial Activities	1,902	3.3%	-1.5%	-6.6%
Professional and Business Services	3,553	6.2%	2.8%	-2.8%
Education and Health Services	17,293	30.3%	0.9%	-8.7%
Leisure and Hospitality	6,108	10.7%	-2.1%	-11.4%
Other Services	759	1.3%	1.3%	-11.4%
Public Administration	6,942	12.2%	-0.2%	5.2%

Employment by Industry (4th Quarter 2020)



Economic Profile for Workforce Development Area for the Month of April 2021 - Projections



Industry Title	Percent Change
Support activities for mining	81.3
Professional and business services	50.7
Natural resources and mining	45.8
Home health care services	32.9
Individual and family services	32.1
Building material and supplies dealers	31.2
Local government, ex. education & hospitals	27.9
Traveler accommodation	19.9
Leisure and hospitality	19.7
Public administration	18.1