

ROBERTO BOBBY BARRERA EL STEM MAGNET

Campus Improvement Plan

2022/2023

Falcons: Soaring To New Heights!

Maria Hudgins, Principal
575 Mitchell Blvd. Laughlin AFB, Texas
(830) 778-4110
maria.hudgins@sldr-cisd.org

Date Reviewed:

Date Approved:

ROBERTO BOBBY BARRERA EL STEM MAGNET

Mission

Our STEM school provides the foundation to encourage students to become curious and critical thinkers that will engage in developing multiple solutions to real world problems to benefit society and their future.

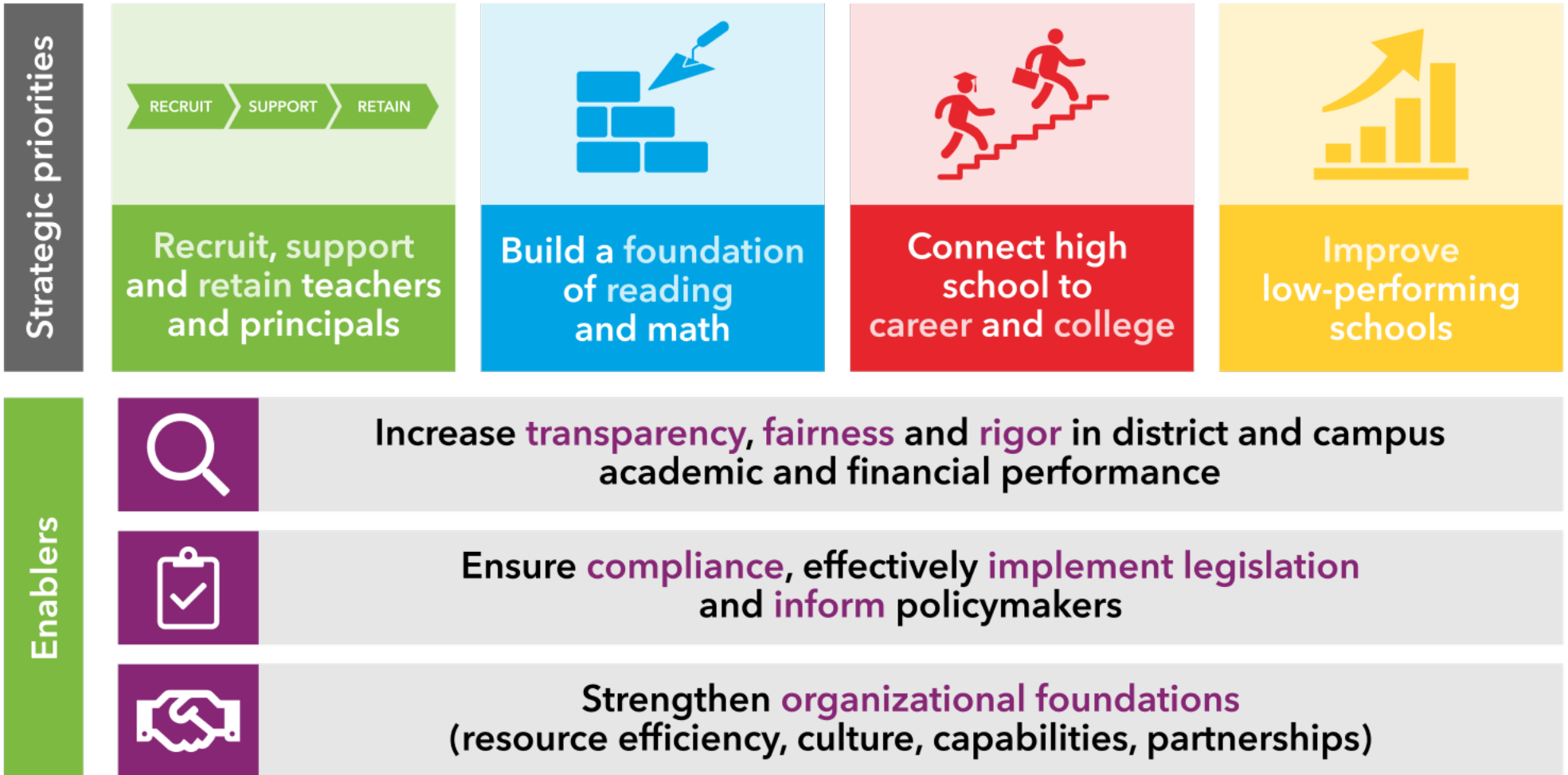
Vision

RBB Elementary STEM Magnet school is small community where every student at our campus will be prepared to flourish as global citizen.

Nondiscrimination Notice

ROBERTO BOBBY BARRERA EL STEM MAGNET does not discriminate on the basis of race, color, national origin, sex, or disability in providing education services, activities, and programs, including vocational programs, in accordance with Title VI of the Civil Rights Act of 1964, as amended; Title IX of the Educational Amendments of 1972; and section 504 of the rehabilitation Act of 1973; as amended.

Every child, prepared for success in college, a career or the military.



**adapted from TEA Strategic Plan - <https://tea.texas.gov>*

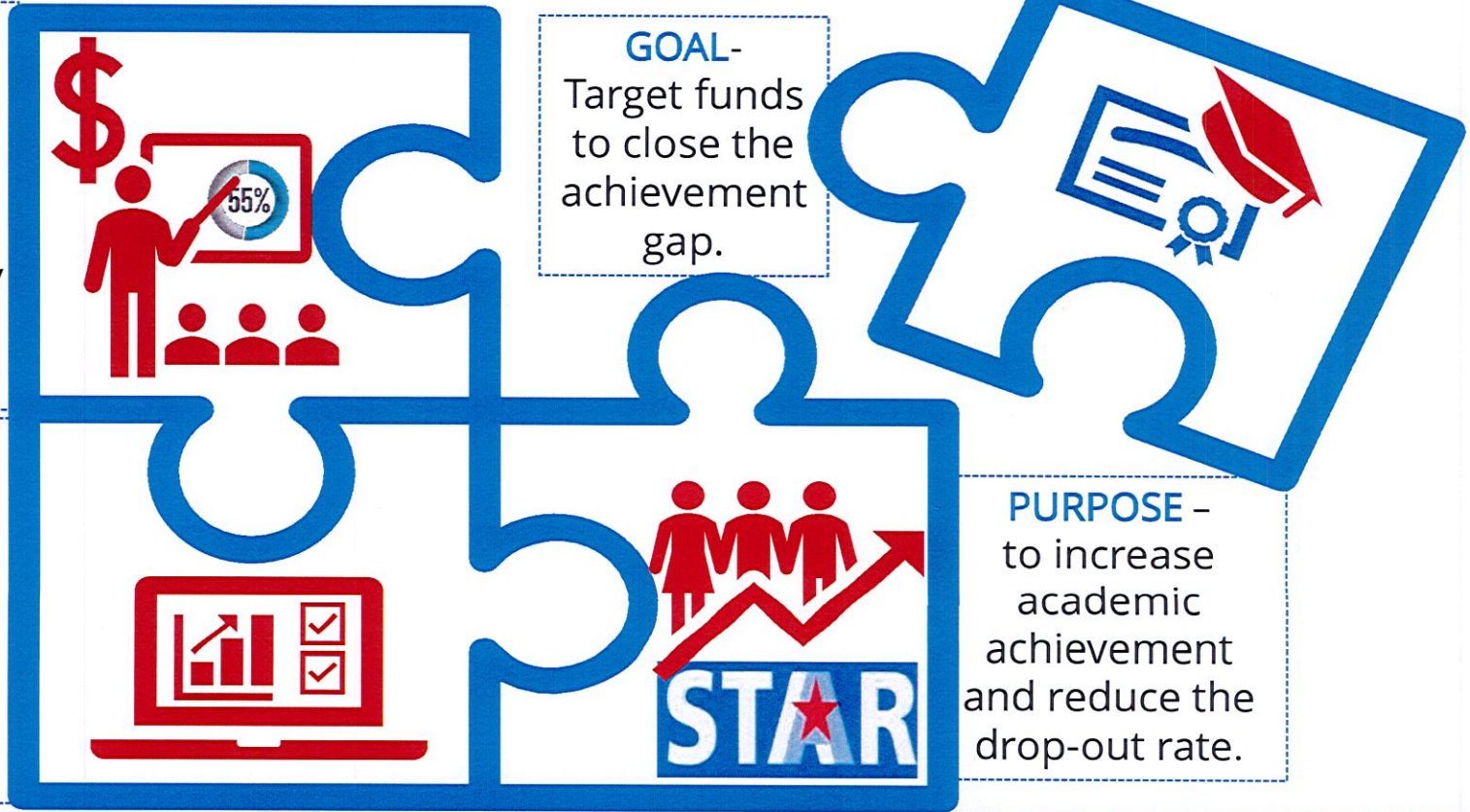
State Compensatory Education Program

STATE FUNDS for supplemental programs and services to support at-risk and educationally disadvantaged students

ANALYSIS of the school's CNA - to identify the priority needs and direction for the SCE program

GOAL- Target funds to close the achievement gap.

PURPOSE - to increase academic achievement and reduce the drop-out rate.



TEC, §29.081

TEC, §48.104



ROBERTO BOBBY BARRERA EL STEM MAGNET Site Base

Name	Position
Nunez, Sheila	Kinder Teacher
Weatherly, Kelley	Kinder Teacher
Hudgins, Maria	Principal
Reed, Andrea	Teacher
Rodarte, Marisol	Paraprofessional
Ramos, Annette	Counselor
Ortiz, Lisa	First Grade Teacher
Rodriguez, Adri	Teacher
Avalos, Jasmin	Teacher
Pyle, Ciara	Teacher
Molina, Lizbeth	Library Aide
Ramos, Annette	Counselor
Gomez, Janette	Community Member
Rodriguez, Gabriela	Teacher
Cortez, Isela	Teacher
Serwatka, Sarah	Paraprofessional
Garcia, Andrea	Paraprofessional

Comprehensive Needs Assessment Summary – 2022-2023 Bobby Barrera STEM Magnet School

Utilized Data Sources: These will automatically populate from your CNA worksheets

- | | | |
|------------------------------------|--|--|
| Formative/Baseline Assessments | TPRI BOY, MOY, EOY | DMAC Reports |
| STAR Reinnassance | TTESS, Student Success Reports | Teacher Conferences |
| District/Campus Ongoing PD | Daily Plannting Protocol | 6 Weeks Discipline/Staff Survey |
| 6 Weeks Honor Roll/Failure Reports | Enrichment Programs | Del Rio Cares Lessons |
| GT Nominations/Testing | DMAC Reports for
Summatives/Benchmarks/TPRI/STAR AR | Enrichment Activities |
| Student Centered Classrooms | PFE Participation Sign in Sheets for Activities/Events | Parent/Dist. Cabinet/Admin Conferences |
| Parent feedback | Parent/Teacher Logs/Apps | Reading Resources, Reading Eggs, AR STAR |
| Computers in the classroom | Laptops, Chromebooks, iPads | |

Area Reviewed	Summary of Strengths	Summary of Needs	Priorities
	What were the identified strengths?	What were the identified needs?	What are the priorities for the campus, including how federal and state program funds will be used?
	<p>90% of 3rd, 4th , 5th grade students reading on grade level. Use of baseline assessments in the fall, Checkpoints and benchmarks in the spring, AR Reinnassance end of every six weeks, 3RD grade TPRI BOY, MOY, DMAC reports are in place and functioning to track progress.</p> <p>Teachers are intentional during W.I.N. time interventions.</p>	<p>Support for Special Education teacher to fulfill needs of all SpEd. Identified students.</p> <p>Additional hands-on trainings to support school staff on best practices for emotional de-escalation</p>	<p>Special Ed. Teacher support</p> <p>Reading Intervention time with trained support staff.</p>

Area Reviewed	Summary of Strengths What were the identified strengths?	Summary of Needs What were the identified needs?	Priorities What are the priorities for the campus, including how federal and state program funds will be used?
Academic Achievement	<p>4th and 5th HB4545 students are showing growth in state tested content areas.</p> <p>#REF!</p> <p>During February Benchmark testing, third grade reading data displayed an average score of 81% and an average math score of 74%</p> <p>85% of K, 1st, and 2nd grade students are reading at or above grade level through the use of weekly decodable stories.</p>	<p>More presence from diagnosticians during IEP scheduled meetings.</p> <p>Provide resources for students and parents prior to school day starting and at end of school day</p> <p>Full time librarian and full scale library/ more buildings to accommodate campus needs</p> <p>Teacher training on child study process and timeliness of initiated process</p>	<p>Furnishing the school library with class sets of chapter books and higher reading materials/novels</p> <p>Ful- time, on site Librarian</p> <p>de-escalation support and hands-on training</p> <p>2 Standing desks and 3 pilates balls in classrooms for ADHD students</p>
	<p>High moral and culture among staff</p> <p>Conferences utilized to review reports and initiate child studies for Tiers 2 and 3 in ELA and/or math</p>	<p>Crisis Core Team Training, sensory resources for de escalation students in distress</p> <p>New teacher GT and STEM training.</p>	<p>diagnostitian presence on site</p> <p>GT and Sped training for all staff</p>

Area Reviewed	Summary of Strengths What were the identified strengths?	Summary of Needs What were the identified needs?	Priorities What are the priorities for the campus, including how federal and state program funds will be used?
Staff Quality	<p>High teacher participation in after school clubs and tutoring</p> <p>Planning Protocol Participation for all teachers, intentional focus weekly Planning Protocol on campus</p> <p>Research Based Instructional Strategies (project-based learning)for STEM Curriculum</p> <p>Del Rio Cares and Second Step programs are supported by staff.</p>	<p>TBSI training for staff, CPR training for staff</p> <p>Needs of a Military Child training for staff through Coalition for Millitary Child</p> <p>A committee to review, update, and approve campus discipline plan for campus.</p> <p>Extra rooms for P.E., Library, auditorium, and storage.</p>	<p>Dyslexia teacher support</p> <p>TBIS traing for all staff with implementation of revised campus discipline plan</p> <p>HR support in getting substitutes for both teachers and paras with base access or willingness to come to LAFB</p> <p>Additional buildings to support PE, library, auditorium, and storage needs</p>
	<p>Great attendance, even on Family Days</p> <p>PTO commitment and donations supports student needs (water, benches, cleaning supplies)</p> <p>Student are able to participate in news and editing enrichment clubs. Excellent crossing monitor is reliable. Base police is consistently patrolling. 20 mph speed enforced limit flashing sign. Addition of speed bumps.</p>	<p>Playground needs upkeep, uneven turf is a hazard during PE</p> <p>More trailers, fencing around portable steps to keep balls out</p> <p>snack; hygiene closet (underwear; socks), healthier food options</p>	<p>Crossing Guard/Teacher Aide needed for safety and support</p> <p>Campus Discipline Plan /Committee/ Behavior Chart and Incentives</p> <p>Awnings for doorways to prevent water damage to classrooms and fall risks</p>

Area Reviewed	Summary of Strengths What were the identified strengths?	Summary of Needs What were the identified needs?	Priorities What are the priorities for the campus, including how federal and state program funds will be used?
School Climate/ Safe & Healthy Schools	<p>Two point entry to allow for PreK parents to walk students in</p> <p>Minimal workers comp cases, minimal student injuries, outstanding medical care by Nurse Gomez</p> <p>Parent communication and support is positive and immediate and provided by appropriate staff member.</p>	<p>Awnings for over classroom doors to prevent water from getting in. Stripping and repainting anti-slip paint on ramps and stairs.</p> <p>Coffee w/ counselor, parent meetings/trainings (123 magic newsletter)</p> <p>SNAP box (Students in Need of Assistance Pronto), Anchored for Life continued growth, Survey to parents, morning announcement shout-out</p>	<p>Groundskeeping-sticker burrs need to be removed, washouts need to be filled, additional fencing needed</p> <p>hygiene closet, parent trainings</p> <p>Communication with parents about supports offered to students so that they feel comfortable communicating household changes with admin and counselor.</p>
College & Career	<p>In leui of UIL, students participated in Drama, Writing and Math clubs.</p> <p>15 GT Referrals, Carrer Guidance is integrated into lessons. Virtual Career Day</p> <p>STAAR results indicate CPO goals and objectives are being met</p>	<p>Career Fair, Partner with Other Schools in states or countries for Diversity Enhancement</p> <p>Student/Parent needs assessment for counselor</p> <p>Talent Show for Students, College Day Pep Rally, Highligt/showcase a university every month</p>	<p>Increase the number of students participating in extracurricular and their choices (inclusivity for lower elementary)</p> <p>all activites need to have a back-up sponsor</p> <p>Instructional support needed for all students in child studies and in need of RTI</p>

Area Reviewed	Summary of Strengths What were the identified strengths?	Summary of Needs What were the identified needs?	Priorities What are the priorities for the campus, including how federal and state program funds will be used?
Readiness/ Graduation/ Dropout Reduction	<p>Science Fair participants in all grade levels at campus level only due to Covid</p> <p>STEM projects in all grade levels, PLTW Launch K - 5</p> <p>Campus leader roles through Anchored4Life</p>	<p>Develop social emotional skills all day every day, develop technological skills and critical thinking skills</p> <p>Aim for 100% of students of students to be on level or above in reading</p> <p>Promote student activities for public speaking in the classroom, parent and community presentations,</p>	<p>Quality instruction in GT differentiation & STEM activities in all classrooms needs to increase and consummable materials need to be purchased</p> <p>Afterschool and in-class RTI to meet CPO's</p>
	<p>Red Ribbon Week Resources /Fire Prevention Week Base presence in parking lot, Dr. Seuss Week, Military Month Celebration, donated recess items for student physical engagement, and PTO involvement</p>	<p>Timely feedback to parents for progress in class, especially important if student is in need of a child study. Increase in parent teacher conferences. If apps are used cannot be relied on as they only means of communication as flaws result in miscommunication. Website should be updated regularly.</p>	<p>Build relationships with the LAFB departments for STEM resources, presentations, and field trips</p>

Area Reviewed	Summary of Strengths What were the identified strengths?	Summary of Needs What were the identified needs?	Priorities What are the priorities for the campus, including how federal and state program funds will be used?
Family and Community Involvement	Beautificaton PTO Project, Successful Food Drive in December, BFCU Jacket/Coat Donations Science Fair, Kinder ceremonies and 5th grade promotion ceremony	Monthly Counselor Corner newsletter for parents and webpage School parent liason position	Programs/Showcases involving students at parent meetings with varying times Information about district resources to parents and families via trainings and meetings Increase the number of volunteer opporuniites for parents and LAFB residents at the school and school events.Campus upkeep/beautification - grounds are not well maintained & pose risks to students from overgrowth/uneven surfaces, current state of campus fosters no school pride and is a turn-off for incoming parents/students opportunities for parent trainings

Area Reviewed	Summary of Strengths What were the identified strengths?	Summary of Needs What were the identified needs?	Priorities What are the priorities for the campus, including how federal and state program funds will be used?
	<p>Base support through SLO, Janette Gomez, and Youth Center</p> <p>Weekly Del Rio Cares and Second Step given by campus counselors</p> <p>Wax Museum, 3rd Grade store, Parent/Teacher Conferences, Weekly Counseling Sessions with Ms. Jessica Peek</p>	<p>Better parent orientation/trainings on topics such as the use of Skyward, GT testing, UIL, advancement to KG from PK & transition to 6th from 5th is critical for student success in academics and social emotional. A one stop resource sheet for incoming military parents. Baby changing table in restrooms in the cafeteria. STEM Night. Parents need more information beginning of the year.</p> <p>Parent updates regarding AR STAR, TPRI , GT, and STAAR.</p> <p>Library curriculum that is more focused on authentic literature rather than on individual student choice. Hands on reading activities led by librarian. Campus Monthly Newsletter, Printers that work consistently for communication, Beautify Campus, Enhance school pride and unity</p>	<p>School Liason position</p>
	<p>Chromebooks available for all studets; iPads-technology is up-to-date; High speed internet</p> <p>Teachers have various technolglcal resources to engage students</p>	<p>Food insecurities with students</p> <p>Technology department response time</p>	<p>Variety of healthy food options for students</p> <p>Technlogy training on iPEVO, Software on iPads, Skyward, Google platform</p>

Area Reviewed	Summary of Strengths What were the identified strengths?	Summary of Needs What were the identified needs?	Priorities What are the priorities for the campus, including how federal and state program funds will be used?
District/Campus Commitments	<p>Office staff is reliable and dependable to meet the needs of students and staff</p> <p>Class sizes (student to teacher ratio), cleanliness, breakfast and Lunch available to all students</p> <p>Established two points of entry to campus. Administration is transparent and available to parents, and staff.</p> <p>Staff support for mobile students (Anchored for Life)</p>	<p>Technology department accessibility to our base campus results in loss of teacher time and resources for students</p> <p>Transfer of student records</p> <p>Strings program does not extend to our school, other elementary programs in the district do not extend to RBB</p> <p>Quality disinfecting & cleaning of school every day with support with needs such as adjusting desk heights.</p>	<p>Technology department accessibility to campus</p> <p>STEM 2025 integration in Math and Science</p> <p>District program available to other elementary campuses need to be inclusive of RBB campus</p> <p>One district custodian, campus marquee, need shed for storage</p>

NOTE: Activities funded through federal programs and State Compensatory Education funds should be identified in the Needs and/or Priorities sections above. The Comprehensive Needs Assessment does not contain what you will do to meet the needs. It is simply a report of the data examined and the conclusions drawn from that data. Needs identified in the CNA will lead to the goals, objectives, and strategies in the DIP/CIP.

ROBERTO BOBBY BARRERA EL STEM MAGNET

Goal 1. The District shall maintain a safe environment, utilize quality curriculum and diverse instructional opportunities to ensure student achievement at the highest standards of excellence.

Objective 1. By Spring of 2023, 80% of the 4th and 5th HB4545 students will show significant growth on STAAR state assessment.

Activity/Strategy	Person(s) Responsible	Timeline	Resources	Evaluation
1. Planning Protocol with each grade level, 3 hours, one day per week for strategic implementation of District curriculum and student needs. (Target Group: All) (Strategic Priorities: 1,2) (CSFs: 1,2,3,4,6,7)	Campus Administrators, Teachers	August 2022 - May 2023		Criteria: District Assessments and STAAR Results disaggregated at RTI/Data Days 06/06/23 - Completed (S) 03/07/23 - On Track 11/11/22 - On Track
2. Teachers will continue to receive training on updates to Planning Protocol Dashboard and DMAC as needed and generate/analyze student performance reports on assessments to inform instruction and develop lesson plans and modify Roadmaps for their content(s). (Target Group: All) (Strategic Priorities: 1,3,4) (CSFs: 1,2,6,7)	Campus Administrators, Chief Instructional Officers, Teachers	August 2022-May 2023		Criteria: increase in use the dashboard, DMAC reports and student achievement monitored during Planning Protocol 06/06/23 - Completed (S) 03/07/23 - On Track 11/11/22 - On Track
3. Teachers will receive training on best practices in STEM, Math, Reading, Science, Social Studies, Technology, Google Classroom and extensions by administrator, Curriculum and Instruction, through online PD, self paced learning, Planning Protocol and NIET/Region 15 trainings. (Target Group: All) (Strategic Priorities: 1,2,4) (CSFs: 1,2,3,4,6,7)	Campus Administrators, Chief Instructional Officers, Curriculum Coordinators, Teachers	August 2022-May 2023		Criteria: Walkthrough data 06/06/23 - Completed (S) 03/07/23 - On Track 11/11/22 - On Track
4. All teachers will be provided with materials to support reading and math intervention programs within the structure of their class time based on the needs of students and grade level to increase student achievement. (Lone Star Learning, Progress Learning, Read Naturally, BrainPop, Renaissance Learning) (Target Group: All) (Strategic Priorities: 2,4) (CSFs: 1,2,3,4,7)	Campus Administrators, Teachers	August 2022-March 2023	(S)State Compensatory - \$7,844.91	Criteria: DMAC Data information 06/06/23 - Completed (S) 03/07/23 - On Track 11/11/22 - On Track
5. Teachers will be assisted in implementing W.I.N. time 45 minutes daily by an instructional aide or tutor. Students will be grouped by need, including HB4545, HB3, RTI, Tier 1, Tier 2 and	Campus Administrators, Instructional Aides, Teachers	August 2022-May 2023		Criteria: End of year results on Reading Renaissance and STAAR Reading and Math

ROBERTO BOBBY BARRERA EL STEM MAGNET

Goal 1. The District shall maintain a safe environment, utilize quality curriculum and diverse instructional opportunities to ensure student achievement at the highest standards of excellence.

Objective 1. By Spring of 2023, 80% of the 4th and 5th HB4545 students will show significant growth on STAAR state assessment.

Activity/Strategy	Person(s) Responsible	Timeline	Resources	Evaluation
Tier 3. (Target Group: All) (Strategic Priorities: 2,4) (CSFs: 1,2,3,4,6,7)				06/06/23 - Completed (S) 03/07/23 - On Track 11/11/22 - On Track
6. The teachers will grow through PD process to implement STEM activities aligned with curriculum through TEA TSTEM. Teachers will also use the extending STEM activities in Discovery Education, Progress Learning and STEM Scopes. (Target Group: All) (Strategic Priorities: 1,2) (CSFs: 1,2,3,4,6,7)	Campus Administrators, Chief Instructional Officers, Directors, Instructional Aides, Teachers	August 2022-May 2023		06/06/23 - Completed (S) 03/09/23 - On Track 11/11/22 - On Track
7. Instructional staff, counselors and administration will implement District programs and initiatives such as Balanced Literacy, RTI, GT, Special Education, 504, Dyslexia with training and student testing to support student needs and identification of students with special needs. (Abecedarin ABC, NCS Pearson, Pro Ed, Scottish Rite Hospital, Staples) (Target Group: All) (Strategic Priorities: 1,2) (CSFs: 1,2,3,4,5,6,7)	ARD Committee, Campus Administrators, Counselors, Curriculum Coordinators, Dyslexia Teacher, Special Ed Teacher, Teachers	August 2022-May 2023	(S)State Compensatory - \$548.49	Criteria: Walkthrough Data, RTI/Data Day meetings, end of year reports and number of good referrals for testing 06/06/23 - Completed (S) 03/09/23 - On Track 11/11/22 - On Track
8. Classroom teachers will all be GT Certified to support our Gifted and Talented students. (Target Group: GT) (Strategic Priorities: 1,2) (CSFs: 1,2,5,7)	Campus Administrators, Curriculum Coordinators, Teachers	August 2022-December 2023		Criteria: All classroom teachers will complete the 30 hrs of initial training or complete the needed 6 hours of annual GT training 06/06/23 - Completed (S) 03/09/23 - Completed 11/11/22 - Completed
9. The Counselor will have lessons with all grade levels on character development and will keep track of academic success, discipline and attendance for the school year. Del Rio Cares character education program lessons are delivered once a week to each grade level. (Target Group: All) (Strategic Priorities: 2,4) (CSFs: 1,2,3,4,6)	Campus Administrators, Counselors	August 2022-May 2023		Criteria: Counselor will check on students that need intervention 06/06/23 - Completed (S) 03/09/23 - On Track 11/11/22 - On Track

ROBERTO BOBBY BARRERA EL STEM MAGNET

Goal 1. The District shall maintain a safe environment, utilize quality curriculum and diverse instructional opportunities to ensure student achievement at the highest standards of excellence.

Objective 1. By Spring of 2023, 80% of the 4th and 5th HB4545 students will show significant growth on STAAR state assessment.

Activity/Strategy	Person(s) Responsible	Timeline	Resources	Evaluation
10. The students and teachers will be involved in coordinated learning programs with the LAFB Library, Airman and Family Readiness Center, the Communications Squadron and the Civil Engineering Squadron to support STEM and the TEKS for their grade level. (Target Group: All) (Strategic Priorities: 1,2) (CSFs: 1,2,3,4,5,6)	Campus Administrators, Counselors, Instructional Aides, Teachers	August 2022-May 2023		Criteria: Activity agendas, scheduling of events/visits and sign-in sheets of participation 06/06/23 - Completed (S) 03/09/23 - On Track 11/11/22 - On Track
11. The teachers and students will utilize the classroom set of iPads in PreKinder and the classroom sets of Chromebooks in grades K-5th for enrichment and instruction on a daily basis to improve learning loss. (Target Group: All) (Strategic Priorities: 1,2) (CSFs: 1,2,3,4,6,7)	Campus Administrators, Directors, Instructional Aides, Teachers	August 2022-2023		Criteria: Walkthroughs and Lesson plans 06/06/23 - Completed (S) 03/09/23 - On Track 11/11/22 - On Track
12. Highly qualified staff (teachers, counselors, and para-professional) will support at-risk and educationally disadvantaged students to increase academic achievement and reduce the drop-out rate. (Target Group: AtRisk) (Strategic Priorities: 1)	Campus Administrators, Chief Instructional Officers	August 2022 - May 2023	(S)State Compensatory	Criteria: Payroll/HR Documentation 06/06/23 - Completed (S) 03/09/23 - On Track 11/11/22 - On Track

ROBERTO BOBBY BARRERA EL STEM MAGNET

- Goal 1.** The District shall maintain a safe environment, utilize quality curriculum and diverse instructional opportunities to ensure student achievement at the highest standards of excellence.
- Objective 2.** To address HB3, by the end of May 2023, 3rd grade students will grow in number of students at Meets and Masters in Reading and Math to meet the 2023 HB3 goals of Reading - 88% and HB3 Math - 88%

Activity/Strategy	Person(s) Responsible	Timeline	Resources	Evaluation
1. Students will participate in W.I.N. intervention time for 45 minutes daily to focus on individual academic needs based on BOY, Checkpoint, Summatives and Benchmark Data. (Target Group: All) (Strategic Priorities: 2)	Campus Administrators, Instructional Aides, Teachers	August 2022 - May 2023		Criteria: BOY, RTI, Benchmark and STAAR assessment data 06/06/23 - Completed (S) 03/09/23 - On Track 11/11/22 - On Track
2. Teachers are provided the resources and training of new programs to use during intervention and Tier 1 instruction. (Target Group: All) (Strategic Priorities: 1,2)	Campus Administrators, Instructional Aides, Teachers	August 2022 - May 2023		Criteria: Summative, Benchmark and STAAR assessment data 06/06/23 - Completed (S) 03/09/23 - On Track 11/11/22 - On Track
3. Planning protocol will be focused on Tier 1 instruction, student engagement, mastery of concepts, and student ownership with individual student needs in mind. (Target Group: K,1st,2nd,3rd,4th,5th) (Strategic Priorities: 1,2)	Campus Administrators, Teachers	August 2022 - May 2023		Criteria: Walkthrough data, student achievement data 06/06/23 - Completed (S) 03/09/23 - On Track 11/11/22 - On Track
4. Students are given opportunities for intervention during W.I.N. time, during independent work time, and during guided lessons on a daily basis to meet individual needs. (Target Group: All) (Strategic Priorities: 2)	Campus Administrators, Teachers	August 2022 - May 2023		Criteria: Student Achievement Data 06/06/23 - Completed (S) 03/09/23 - On Track 11/11/22 - On Track

ROBERTO BOBBY BARRERA EL STEM MAGNET

Goal 1. The District shall maintain a safe environment, utilize quality curriculum and diverse instructional opportunities to ensure student achievement at the highest standards of excellence.

Objective 3. All 4th and 5th grade students will meet expected growth on STAAR.

Activity/Strategy	Person(s) Responsible	Timeline	Resources	Evaluation
1. Students will receive intervention through after school tutorials and HB4545 intervention time within W.I.N. time. (Target Group: 4th,5th) (Strategic Priorities: 2)	Campus Administrators, Teachers	August 2022 - May 2023		Criteria: STAAR growth reports 06/06/23 - Completed (S) 03/09/23 - On Track 11/11/22 - On Track

ROBERTO BOBBY BARRERA EL STEM MAGNET

Goal 1. The District shall maintain a safe environment, utilize quality curriculum and diverse instructional opportunities to ensure student achievement at the highest standards of excellence.

Objective 4. By May 2023, the student attendance rate will be at an average of 98%.

Activity/Strategy	Person(s) Responsible	Timeline	Resources	Evaluation
1. Classes will have an opportunity for class incentives for reaching 98% attendance goals and be rewarded with FMLV approved prizes as snacks, movies, and lunch with the principal. (Target Group: All) (Strategic Priorities: 2,4) (CSFs: 1,2,4,5,6)	Attendance Staff, Campus Administrators, Counselors, Instructional Aides, Teachers	August 2022-May 2023		Criteria: Daily Attendance reports and Parent contact logs 06/06/23 - Completed (S) 03/09/23 - On Track 11/11/22 - On Track
2. Attendance will be monitored using the District's Skyward program. Teachers monitor attendance for their homeroom students. Teachers will post official attendance at 10 a.m. daily. (Target Group: All) (Strategic Priorities: 2) (CSFs: 1,2,4,5,6)	Attendance Staff, Campus Administrators, Teachers	August 2022-May 2023		Criteria: Daily attendance folder monitoring and teacher attendance posting. 06/06/23 - Completed (S) 03/09/23 - On Track 11/11/22 - On Track
3. On dates designated as Family Days by LAFB we will promote programs that will increase student attendance on those days with programs and/or activities that may involve parent/family participation. (Target Group: All) (Strategic Priorities: 1,2) (CSFs: 1,4,5,6)	Attendance Staff, Campus Administrators, Counselors, Instructional Aides, PTO, Teachers	August 2022-May 2023		Criteria: Meeting agendas, sign-in sheets and notes 06/06/23 - Completed (S) 03/09/23 - On Track 11/11/22 - On Track
4. There will be monthly training for parents on attendance policies, documentation and regulations during the 1st semester of the school year and as needed from parent surveys. (Target Group: All) (Strategic Priorities: 2,4) (CSFs: 1,3,5,6)	Campus Administrators, Counselors, Parents, PTO, Teachers	August 2022-May 2023		Criteria: Agenda, sign-in sheets and newsletters 06/06/23 - Completed (S) 03/09/23 - On Track 11/11/22 - On Track
5. Teachers will follow up with parents if students are absent. Although individual attendance incentives are not an option this school year, teachers will be ensuring students are receiving what they missed and are getting caught up upon their return. (Target Group: All) (Strategic Priorities: 1) (CSFs: 1,3,4,6,7)	Attendance Staff, Campus Administrators, Teachers	August 2022-May 2023		Criteria: Grading Period Teacher Attendance Report(AESOP) 06/06/23 - Completed (S) 03/09/23 - On Track 11/11/22 - On Track

ROBERTO BOBBY BARRERA EL STEM MAGNET

Goal 1. The District shall maintain a safe environment, utilize quality curriculum and diverse instructional opportunities to ensure student achievement at the highest standards of excellence.

Objective 5. Principal will establish systems to support teachers in managing curriculum and assessment documents. Instructional materials and resources with expected rigor, key ideas, and essential questions will strategically align through ongoing teacher discourse, collaboration and coaching.

Activity/Strategy	Person(s) Responsible	Timeline	Resources	Evaluation
1. Administrator will lead planning protocol using rubric/agenda to drive planning, discussion about rigor, engagement and student ownership. Each grade level teacher will plan for 3 hours, once a week. (Target Group: All) (Strategic Priorities: 1,2)	Campus Administrators, Chief Instructional Officers, Teachers	August 2022 - May 2023		Criteria: Student achievement data 06/06/23 - Completed (S) 03/09/23 - On Track 11/11/22 - On Track
2. Administrator will offer prompt feedback and coaching after a walkthrough. Evidence of what was discussed in Planning Protocol will be observed. (Target Group: All) (Strategic Priorities: 1,2)	Campus Administrators, Teachers	August 2022 - May 2023		Criteria: TTESS walkthrough feedback, planning protocol artifacts and discussion 06/06/23 - Completed (S) 03/09/23 - On Track 11/11/22 - On Track

ROBERTO BOBBY BARRERA EL STEM MAGNET

Goal 1. The District shall maintain a safe environment, utilize quality curriculum and diverse instructional opportunities to ensure student achievement at the highest standards of excellence.

Objective 6. By May 2023, 70% of the student population will participate in extracurricular activities.

Activity/Strategy	Person(s) Responsible	Timeline	Resources	Evaluation
1. Students will be given the opportunity to participate in District extracurricular activities such as UIL Academics, Student Council, Robotics, Music clubs, Yearbook, Art Club, STEM Club and additional organizations created at RBB Elementary to demonstrate student interest and leadership. (Target Group: All) (CSFs: 5,6)	Campus Administrators, Counselors, Instructional Aides, PTO, Teachers	August 2022-May 2023		Criteria: Schedules, sign-up sheets and activity participation 06/06/23 - Completed (S) 03/09/23 - On Track 11/11/22 - On Track
2. Students, teachers and parents will be invited and encouraged to participate in the Annual Elementary Cross Country Meet, Elementary Track Meet and the I Love My Teacher 5K. (Target Group: All) (CSFs: 3,5,6)	Campus Administrators, Instructional Aides, Parents, PTO, Teachers	October 2022-May 2023		Criteria: Sign-up lists, promotional materials and participation lists 06/06/23 - Completed (S) 03/09/23 - On Track 11/11/22 - On Track

ROBERTO BOBBY BARRERA EL STEM MAGNET

- Goal 1.** The District shall maintain a safe environment, utilize quality curriculum and diverse instructional opportunities to ensure student achievement at the highest standards of excellence.
- Objective 7.** All students will continue to be trained in character development principles during the 2022-2023 school year through Del Rio Cares and Second Step and will begin to take on leadership roles. Students will participate in leadership roles through Anchored4Life.

Activity/Strategy	Person(s) Responsible	Timeline	Resources	Evaluation
1. The School Counselor will conduct guidance lessons in character ed for students with special programs in bullying, respecting others, diversity, setting goals, conflict resolution, violence and suicide prevention and other life skills in each grade level through Del Rio Cares. Lessons will be conducted once a week per grade level. (Target Group: All) (CSFs: 1,3,4,6)	Campus Administrators, Counselors, Teachers	August 2022- May 2023		Criteria: Lesson plans and schedule 06/06/23 - Completed (S) 03/09/23 - On Track 11/11/22 - On Track
2. Students will participate in Red Ribbon Week activities, Fire Safety, Celebrity Reader, Career Day, Science Fair, GT Fair, Elementary STEM Week, Anchored4Life and be given leadership opportunities. (Target Group: All) (Strategic Priorities: 2) (CSFs: 1,4,5,6)	Campus Administrators, Counselors, Instructional Aides, PTO, Teachers	August 2022-May 2023		Criteria: Agendas, schedules, sign-in sheets, participation 06/06/23 - Completed (S) 03/09/23 - On Track 11/11/22 - On Track
3. The Campus Leadership Team will assist the Principal in forming committees and organizing functions for students and parents. (Target Group: All) (Strategic Priorities: 1,4) (CSFs: 3,5,6,7)	Campus Administrators, Counselors, Teachers	August 2022 - July 2023		Criteria: Meeting notes, sign-in sheets, agendas, Climate Survey 06/06/23 - Completed (S) 03/09/23 - On Track 11/11/22 - On Track

ROBERTO BOBBY BARRERA EL STEM MAGNET

Goal 1. The District shall maintain a safe environment, utilize quality curriculum and diverse instructional opportunities to ensure student achievement at the highest standards of excellence.

Objective 8. During the first semester of the 2022 - 2023 School Year, there will be a campus-wide discipline and safety plan to maintain a safe and orderly campus using restorative practices.

Activity/Strategy	Person(s) Responsible	Timeline	Resources	Evaluation
1. We will use a communication tool such Class Dojo, email, phone call or face to face conference to keep parents informed on students' academic progress and behavior in class. (Target Group: All) (Strategic Priorities: 1) (CSFs: 3,5,6)	Attendance Staff, Campus Administrators, Counselors, Instructional Aides, Teachers	August 2022 - May 2023		Criteria: Plan implementation and decreased serious discipline issues 06/06/23 - Completed (S) 03/09/23 - On Track 11/11/22 - On Track
2. Positive Behavior Support (PBS) training and Classroom Management/Crisis Prevention training will be available for all staff to help redirect student behavior and de-escalate issues in the classroom. (Target Group: All) (Strategic Priorities: 1) (CSFs: 1,3,4,6)	Campus Administrators, Counselors, Directors, Instructional Aides, Mental Health & Disabilities, Teachers	August 2022-May 2023		Criteria: Certificates of Completion CORE Crisis Team meeting agendas and meetings 06/06/23 - Completed (S) 03/09/23 - On Track 11/11/22 - On Track
3. Train all staff and students on safety drills required by the State of Texas and the United States Air Force in coordination with District Police and Security Forces. (Target Group: All) (CSFs: 4,6)	Campus Administrators, Counselors	August 2022-May 2023		Criteria: Drill training dates and drill schedule 06/06/23 - Completed (S) 03/09/23 - On Track 11/11/22 - On Track
4. There will be a school Core Crisis Team consisting of the Nurse, Counselor, an Instructional Aide, an EC teacher and an Upper Grade level teacher to assist teachers in the well-being and restraint of students in need. (Target Group: All) (CSFs: 4,6)	Campus Administrators, Counselors, Teachers	August 2022-May 2023		Criteria: Documentation and certification of Core Crisis Team members 06/06/23 - Completed (S) 03/09/23 - On Track 11/11/22 - On Track

ROBERTO BOBBY BARRERA EL STEM MAGNET

Goal 1. The District shall maintain a safe environment, utilize quality curriculum and diverse instructional opportunities to ensure student achievement at the highest standards of excellence.

Objective 9. Students have rigorous learning experiences based on the design and delivery of data- and objective-driven daily lessons, classroom routines, and formative monitoring systems that yield the data necessary to reflect, adjust, and deliver instruction that meets the needs of each student. Principal is responsible for ensuring that every student receives high-quality instruction that leads to student growth and achievement.

Activity/Strategy	Person(s) Responsible	Timeline	Resources	Evaluation
1. Student instruction is provided by teachers following a master schedule to include planned focused intervention to meet individual student needs. (Target Group: All) (Strategic Priorities: 1,2)	Campus Administrators, Chief Instructional Officers, Instructional Aides, Teachers	August 2021 - May 2022		Criteria: Attendance logs, lesson plans, student achievement data 06/06/23 - Completed (S) 03/09/23 - On Track 11/11/22 - On Track
2. Planning protocol includes establishing the need for planning rigorous, engaging lessons. Student new learning is addressed as well as teacher new learning through modeling of a lesson, coaching and discussion. Time is spent discussing HOW a lesson will be taught to maximize learning and student achievement. (Target Group: All) (Strategic Priorities: 1,2)	Campus Administrators, Teachers	August 2022 - May 2023		Criteria: Walkthrough feedback, TTESS observations and Planning Protocol notes 06/06/23 - Completed 03/09/23 - On Track 11/11/22 - On Track
3. All students will be issued a device to use for instruction, engagement and intervention based on individual need. (Target Group: All) (Strategic Priorities: 2)	Campus Administrators, Chief Instructional Officers, Teachers	August 2022 - May 2023		Criteria: Student achievement data 06/06/23 - Completed (S) 03/09/23 - On Track 11/11/22 - On Track

ROBERTO BOBBY BARRERA EL STEM MAGNET

Goal 2. The District shall be a steward of the community's resources-financial, human, facilities-and explore new opportunities for organizational efficiency and effectiveness.

Objective 1. By the end of May 2022, RBB Elementary STEM Magnet will utilize 90% of local funds to directly impact instruction.

Activity/Strategy	Person(s) Responsible	Timeline	Resources	Evaluation
1. Local campus budget will be aligned to the CIP and the CNA. (Target Group: All) (Strategic Priorities: 1,2,4) (CSFs: 1,2,3,4,5,6,7)	Campus Administrators, Counselors, Teachers	August 2021- June 2022	(S)Local Funds	Criteria: Evaluation from district finance department-Accounting and Budgeting 06/06/23 - Completed (S) 03/09/23 - On Track 11/11/22 - On Track
2. Allot funds for Professional Development out of town such TSTEM, Technology Extravaganza, counseling conferences, and other professional learning opportunities as allowed. (Target Group: All) (Strategic Priorities: 1,2) (CSFs: 1,2,3,4,5,6,7)	Campus Administrators	August 2022 - May 2023		Criteria: Budget proposals and evaluation from the Accounting Department 06/06/23 - Completed (S) 03/09/23 - On Track 11/11/22 - On Track
3. Support Staff at RBB Elementary and Electives Teachers will be utilized to aide classroom teachers with RTI in Reading and Math. (Target Group: All) (Strategic Priorities: 1,2) (CSFs: 1,2,4,6,7)	Campus Administrators, Teachers	August 2022 - May 2023		Criteria: Master Schedule utilized 06/06/23 - Completed (S) 03/09/23 - On Track 11/11/22 - On Track

ROBERTO BOBBY BARRERA EL STEM MAGNET

- Goal 2.** The District shall be a steward of the community's resources-financial, human, facilities-and explore new opportunities for organizational efficiency and effectiveness.
- Objective 2.** Prior to the first day of face to face instruction, RBB Elementary STEM Magnet will offer all incoming Pre-Kinder and Kindergarten students opportunities to visit the campus.

Activity/Strategy	Person(s) Responsible	Timeline	Resources	Evaluation
1. Incoming Pre-Kinder and Kindergarten students will be offered the opportunity to visit the campus to assist in the transition from either home or early childhood centers to the public school system. (Target Group: PRE K,K) (CSFs: 5,6)	Campus Administrators, Counselors, Teachers	August 2022 - May 2023		Criteria: Schedule and sign-in sheets 06/06/23 - Completed (S) 03/09/23 - On Track 11/11/22 - On Track
2. The Kindergarten teachers from RBB Elementary will attend the Kinder Orientation at Irene Cardwell Elementary in May 2023. (Target Group: PRE K,K) (Strategic Priorities: 1) (CSFs: 2,5,6,7)	Campus Administrators, Counselors, Teachers	August 2022 - May 2023		Criteria: Attendance to Kinder Transition and Planning meeting 06/06/23 - Completed (S) 03/09/23 - On Track 11/11/22 - On Track

ROBERTO BOBBY BARRERA EL STEM MAGNET

Goal 3. The District shall provide meaningful and effective communication in a timely manner to all parents and District Partners.

Objective 1. RBB Elementary STEM Magnet will regularly provide communication to parents using various forms of media during the 2022-2023 school year.

Activity/Strategy	Person(s) Responsible	Timeline	Resources	Evaluation
<p>1. The staff at RBB will provide training to all parents for various character development topics, state and local assessments, identification of special needs, STEM topics, internet safety and cyberbullying, drug and alcohol abuse, bullying, how to conduct a good science fair experiment, counseling services for children, career and education opportunities, crisis prevention, and drug prevention and awareness. (Target Group: All) (Strategic Priorities: 1,4) (CSFs: 1,2,3,4,5,6,7)</p>	<p>ARD Committee, Attendance Staff, Bilingual Department, Campus Administrators, Counselors, Instructional Aides, Parents, PTO, Teachers</p>	<p>August 2022-May 2023</p>		<p>Criteria: Sign in sheets, media communication</p> <p>06/06/23 - Completed (S) 03/09/23 - On Track 11/11/22 - On Track</p>
<p>2. Campus will send home monthly calendars, utilize the school call-out system for reminders of important events, update the school webpage with calendars and announcements for important events, a campus newsletter in print and online, and conduct parent meetings. (Target Group: All) (CSFs: 1,3,5,6)</p>	<p>Attendance Staff, Campus Administrators, Counselors, Instructional Aides, Teachers</p>	<p>August 2022-May 2023</p>		<p>Criteria: agendas, sign in sheets and schedules, copy of newsletters and Webmaster schedule</p> <p>06/06/23 - Completed (S) 03/09/23 - On Track 11/11/22 - On Track</p>
<p>3. Parents will be invited and encouraged to participate in campus committees and in campus events. Volunteer opportunities to increase participation in the school and in the classrooms will be announced through the newsletters, classroom memos and the school webpage. Campus events and opportunities for parental involvement will be posted to the RBB PTO FB page and/or other media site. (Target Group: All) (CSFs: 1,3,5,6)</p>	<p>Attendance Staff, Campus Administrators, Counselors, Instructional Aides, PTO, Teachers</p>	<p>August 2022-May 2023</p>		<p>Criteria: Agenda, calendar, sign-in sheets, participation, Climate Survey</p> <p>06/06/23 - Completed (S) 03/09/23 - On Track 11/11/22 - On Track</p>
<p>4. Partner with the City of Del Rio, Del Rio Chamber of Commerce, Hispanic Chamber of Commerce, Boy's and Girl's Club, Council for the Arts and the Amistad National Park Service to provide virtual educational and intramural opportunities for students and parent involvement. (Target Group: All) (Strategic Priorities: 1) (CSFs: 1,3,4,5,6)</p>	<p>Campus Administrators, Counselors, PTO, Teachers</p>	<p>August 2022-May 2023</p>		<p>Criteria: Schedule of field trips, student participation and community events.</p> <p>06/06/23 - Completed (S) 03/09/23 - On Track 11/11/22 - On Track</p>

ROBERTO BOBBY BARRERA EL STEM MAGNET

Goal 3. The District shall provide meaningful and effective communication in a timely manner to all parents and District Partners.

Objective 1. RBB Elementary STEM Magnet will regularly provide communication to parents using various forms of media during the 2022-2023 school year.

Activity/Strategy	Person(s) Responsible	Timeline	Resources	Evaluation
5. RBB STEM Elementary will designate at a minimum a staff member to serve as the school's Webmaster to update and maintain the school's district webpage. (Target Group: All) (CSFs: 5,6)	Campus Administrators, Teachers	August 2022-May 2023		Criteria: Webmaster schedule and posting of updates 06/06/23 - Completed (S) 03/11/22 - On Track 11/19/21 - On Track